

# VOLUNTEER TODAY

Dedicate Yourself to Caring for the Land and Serving the People

<https://www.fs.usda.gov/main/angeles/workingtogether/volunteering>

## Los Angeles Gateway Ranger District & San Gabriel Mountains National MONUMENT Volunteer Newsletter April 2018

Good Day All,

It is field season, and with that there is always an increase in Poison Oak cases for employees. I believe one of the best things to prevent Poison Oak is identification of the plant. This time of year the plant has green glossy leaves. As the summer progresses into the Fall, the leaves turn red and yellow, much like a liquid amber tree. In the winter the plant drops it's leaves and turns into a brown, leafless woody vine. If you are not sure, follow the old adage-Leaves of three, let it be.

Regardless of the season, Poison Oak exposures are responsible for more lost time injuries in the Forest Service than any other cause. The following are some suggestions for dealing with the rash and preventative measures.

- If exposed to the plant, be sure to wash in cold water with soap as soon as possible after the exposure
- Wash affected clothes separately from your families regular laundry-(Don't ask how I know that one!)
- Use a pretreatment before going in areas where you know poison oak is prevalent.
- If you do get the rash and accompanying blisters, do not scratch or use hot water. Both of these actions will only serve to spread the oils, resulting in a wider area of exposure.
- Be aware of infection. The rash and blisters are open wounds. Keep it clean, use cold water and commercially available treatments
- Be aware if the rash spreads you may have to seek professional medical care. .
- Do not inhale the smoke from Poison Oak during a wildfire or prescribed burning activities. It can get into your lungs, creating a serious medical issue.

Check out the following link for more Information:

<http://www.poison-ivy.org/identify-poison-ivy-poison-oak>

Remember- Safety is a learned culture, not an adjective!

**Anyone can say they care.  
But watch their actions, not  
their words.**

**Electronic copy of Newsletter at:  
<http://www.mtlowe.co/VolunteerNews.htm>**

**Blast from the Past.....pg 2-4**  
**Blast Flash Forward!.....pg 5**  
**Gateway Ranger District Volunteer Meeting Minutes.....pg 6-8**  
**A ROAD CREW IS NEEDED!!!!!!.....pg 8**  
**Learn to Lead!.....pg 9-10**  
**Trails Skills College.....pg 11-12**  
**California Trials Day 2018...pg 13**  
**Volunteers Needed .....pg 14-17**  
**AC100 Schedule .....pg 18**  
**The Angeles National Forest Trail Race Schedule .pg 19**  
**Volunteer Training .....pg 20-22**  
**Volunteers at work.....pg 23-25**  
**Volunteer fun.....pg 26-28**  
**Volunteer group news .....pg 28-39**

# Blast from the Past

Los Angeles Times

Date: Mar 4, 1923

## GREAT OUTDOORS CALLS TO DENIZENS OF CITIES

### Rush to Mountain Cabin Villages, Ruled by Forest Ranger Feudal Baron, Begins Soon.

A dark bend in the trail brought the forest ranger out upon a ledge, a sort of shelf overhanging civilization. Far below, like a star-strewn sky inverted, twinkled the lights of Los Angeles. He swept a hand toward the million gleaming pin points.

"There;," the ranger declared. "lies the outdoor capital of America!"

"Tonight," he went on, those city folks are sitting around the reading lamp or out at a movie, maybe. But within a month, they will start the summer rush for mountain-cabin sites.

"Now, There are only 500 or 600 surveyed lots left in Angeles Forest, already, 3000 have been rented, and homes built upon them. But there is plenty of land for more cabin sites—thousands more. So now we will have a recreation expert, who will do nothing else but lay out more lots, more auto camps. The boss made this announcement yesterday.

### NEW FORESTRY PROBLEM

"That is really big news. It means that Los Angeles has created a new problem in forestry. Never before has the forestry service ever had a recreation expert. At Washington, they are tying knots in the Federal policy of conservation, to meet our demands for mountain lots, and for roads, trails and bridges to make them accessible.

"You see, national forests are not really playgrounds. They are watersheds. The real purpose of the forestry service is fire protection. "But leaping crickets! This ranger job has come to be a cross those of a scoutmaster and a Mayor. I figure that by 1930 rangers will have to wear silk hats and diplomats' stripes on their chests."

Again the ranger swept out a hand, this time including the long area that bestrides the San Gabriel and San Bernardino ranges, from Newhall tunnel, stretching eastward, to Coachella Valley on the rim of the desert.

"One hundred miles long." He said. "pretty big bailiwick for only seventeen regular rangers, isn't it? One and a quarter million of the ruggedest acreas in California.

### BRUSH IS VALUABLE

"This is the greates of the seventeen forests. People don't realize it. That flea-bitten brush on the lower slopes may not look valuable to picknickers who build bonfires without permits. But it is mighty valuable. It si more vbaluable than the finest virgin timeber of the Northwest, acre for acre!

Why? Because a greater amount of wealth depend upon this than any other watershed in the whole West. Think of the thouands of orange groves, with the millions of collars in crop yields. Fire protection up here means water supply for them down there. In one way that branch is better watershed cover than timber. It renews itself qucker after fires. In ten years it becomes a jungle.

"So, in addition to being the most vauuable watershed. Angeles Forest is fast rowing into a cabin land. It is the most unique reserve in the world."

### IS VILLAGE MAYOR

"The ranger paused to light his pipe. The light flickered as he puffed. Then, from force of long habit, he thrust the ember of the match into the ground and twisted his heel upon it.

"In addition to his other duties," the ranger continued, "the man in a forestry station has to admistrate affairs at the cabin villages within his district. That's why I say the job is something like a mayor's.

"In San Antonio Canyon, around Camp Baldy, houses are built as thickly as in the city. Shay, the

(CONT TO NEXT PAGE)

## (BLAST FROM THE PAST CONT )

### FOREST BEAUTY

#### Pleasures of Mountains Are Revealed

#### Many Cabin Sites Available at Cheap Rent

#### Recreation Expert Oversees Angeles Reserve

Ranger over there, has started a health department of his own. The permittees pay \$6 a year for garbage collection, three times a week. The boss—Supervisor Carleton that is—issued a contract for a man to make the collections I don't know what the slient, open places are coming to.

"But in other districts the canyons are in about the same shape as when naked Indians were roaming in 'em, dodging nettle bushes.

#### COVERS BIG DISTRICT

"Yes, a ranger sometimes feels like a feudal baron you read about, who rules over a broad province. Only a ranger's district is a heap bigger than a lot of feudal provinces, I bet. The Big Bear district has 200,000 acres, two of which are level ground. There are 870 permits out there—a few more than in San Atonio Canyon, where there are 250. A feudal baron would likely go nutty trying to boss places like those are in the summer.

"Of course, about half of the reserve is patented land—title vested in private ownership before the reserve boundaries were made. But that only makes a ranger's job all the harder.

"Every man, woman and child who comes into the reserve is a potential fire hazard. More fires are started by careless smokers than in any other way, so I guess you might call the men extra hazardous. A cigarette butt flicked out of an automobile may wipe out miles of forest—and a lot of cabins, too, and a resort or so.

"The big fire that treatened Pine Know and Arrowhead Lake resorts last October started from a match or a bit of burning tobacco, in back of the Arrowhead Hot Springs garage.

#### RECORD IS SPOILED

"We never fount out who strated it. But 18,500 acres were burned over. And up until then we had a record year. Only 1500 acres in Angeles Forest, beside that big one, burned in 1923/

In 1921, 10,000 acres were swept over. In the last ten years, the lowest annual fire loss on the watershed was 2000 acres. In 1919 we had a disastrous season. Great fires took 100,000 acres,. One wiped out the entire San Gabriel watershe. That fire has cost ranchers thousands of dollars in water shortage, in floods that eroded their fields and in destruction of grazing range.

"Unless the department at Washington is conviced that a request for a road or trail is a step in fire protection, it is difficult for our office to get funding to build it. The bureau of forestry doesn't care about revenue. Last year , cabin permits brought in \$35,000 in Angeles Forest. But we have to operate on appropriations. That \$35,000 went into Uncle Sams treasury.

#### USE MEANS AVAILABLE

"So we have to lay out a group of cabin sites according to the means we have for making it accessible. The big flood control dam in San Dimas Canyon helped us to open a lot of beautiful sites in the west and main forks of San Dimas Creek. Two hundred sites have been taken and about 150 homes built in there.

"The County built part of the road. The forestry service spen about \$25,000on it to. Some day there will be scores of big flood control dams in the watershed. Some of them, instead of controlling the runoff during sorms, will be a permanent lakes, filled with bass or trout.

"A permittee pays \$15 a year to lease a lot. If he sells his cabin, the second permittee pays \$20. the limit is \$25 a year. Think of that! For \$500 to \$1000 a family can build a comfortable home in the mountains! Unless business obliges them to live in the city, they can make a year-round home in most of the districts. Because some of the best cabin sites are only two or three hours' drive from Los angeles. Yet some folks say this is a "rich man's country!"

#### RENEWAL OF TRAILS

"Eventually Angeles Forest will be a network of roads and trails and hundreds of mountain villages. Right now we have 120 miles of trail. It has to be worked over once every three years. That means 400 miles of trail building every season. Of course, we have help, Seventeen rangers can't do all that single-handed. Often assistant rangers who wear a badge just during the summer months are kept busy at trail building all winter.

**CONT TO NEXT PAGE)**

## (BLAST FROM THE PAST CONT )

“A permittee has one year to improve his lot. He must build a house in harmony with the surroundings. By that, I mean no rag shack set upon a board floor. It must be a permanent building.

You see all sorts of weird houses. Every owner has a plan all his own of what a mountain cabin should be like. Some of them look like they were cut out of the funny paper.

“Then there is a lady who persuaded her husband to file on a lot in Burnt Mill Canyon at Arrowhead Lake so she could send all here old furniture up there and get new things for her home in town. Funny things happen to a married man and he never knows it.

### **ROBBERIES ARE SCARCE**

“A lot of cabin builders avoid putting expensive things in their houses because they are afraid of thieves. Sometimes cabins are broken into while the owners are away, but not often. The rangers get to know the owners, and are quick to observe a stranger in a district. There are probably just as many burglaries right in Los Angeles—yes, more—than in Angeles Forest. It’s too bad that when folks come out from town that they have to bring town ways with them—padlocks and the like.

“A lot of cabins are built by a bunch of young fellows who club in together on the expense. Figuring these and the cabins I know where two families own them jointly. I would say that more than 10,000 persons have mountain homes. Multiply this many times by the guests they bring and you get an idea of the ranger’s work in the busy summer.

“There are many campers, besides. We have auto camps, in many places, with water developed and fireplaces built. There are a string of these camps in Bouquet Canyon. Right now a new one is being built just above Glenn Ranch in Lytle Creek Canyon. They are using a stump puller to clear off four and one-half acres of ground. They will level it and plant shade trees.

### **CAMPS CONVENIENT**

“Auto camps are built at places to suit public convenience. For instance. There is the camp just below the control on Mill Creek, on the road to Big Bear Lake. We found that so many camped there, waiting to catch the first morning control to make the climb in the cool of the day, that we established the camp grounds for them

“All rangers are State fire wardens. They have power to command any citizen to fight fires, in emergency. Although the law does not compel it, we pay fire fighters 35 cents an hour. We had 500 men working at one time in the Arrowhead fire last October.

“A lot of people like to watch fires but don’t especially crave to get in and fight ‘em. I saw a fellow one time, watching a firecrew sweating over shovel handles, who had come up from a resort barefoot, so he couldn’t be asked to go into the rush.

“But I took care of him. I lent him a pair of shoes, made him put ‘em on. And saw that he got a nice, hot position up in the first row.

### **DUTY OF CITIZENS**

“It is every citizen’s duty to help protect the forest. What if private interests had absorbed the forest. Before the reserve policy created? Then few of us would be allowed to visit these palaces. There be no trespassing signs on every bush.”

The ranger knocked his pipe bowl against the heel of his boot and toed the glowing ashes into the soil, evidently untrusting of the green grass, that it might burst into flame.

“Three miles to go up the hill, yet. I must move along,” said he. \ A growing moon cast a radiance that silhouetted the long ridge beyond. The ranger paused to admire the scene and said”

“ I never get tired of the hills. I’m not making a lot of money, but there’s something here that you never can buy in the city. Don’t you feel sorry for the thousands of people who want to be where “there’s something doing all the time ?”

“Why, there’s a lot going on right in these hills. If they only had eyes and ears to see and hear it. The other day I met a geologist who told me that this is the youngest mountain chain on the American continent.

“He said that these mountains haven’t really grown up yet; that each year, the peaks are getting a little higher, raising faster than erosion wears them away. They are still growing. He said just like everything else in Southern California!”

# Blast Flash Forward!

## WHY ARE THERE CABINS IN THE NATIONAL FOREST?

After 1910 it became increasingly apparent that more encouragement to families and resort operators was needed to meet the demand for recreational facilities. The Forest Service had recognized the need to allow recreation structures, with its permit policy. However, the lack of a long-term permit policy discouraged construction of major permanent facilities.

The Term Occupancy Act of March 4, 1915, strongly supported by the Forest Service, permitted it to allow private use and development of public forest lands for terms of up to 30 years by persons or organizations wishing to erect summer camps, hotels, or other resorts. The legislation filled an important need on forests like the Angeles. By 1917 dozens of summer cabins had sprouted in the San Gabriels. Privately financed resorts and lodges, built under the provisions of the Act along mountain trails, led to what one author has called "The Great Hiking Era" of San Gabriel Mountain history. And not all of the new resorts were privately owned. The City of Los Angeles, for example, built a summer camp on 23 acres at Seeley Creek Flats in the San Bernardino Mountains which contained 61 bungalow cabins available to the residents of the city. The camp was still in operation in 1980. By June 30, 1920, 1,329 permits for summer residences and commercial resorts were in effect on the Angeles National Forest.

## CABIN OWNERSHIP IN 2007

New cabins are no longer being built in the forest.

The wilderness surrounding these cabins is unquestionably spectacular, but so is the long list of restrictions that guide their purchase and use.

Buyers can't live in them full time or rent them out. They are intended for recreational use (original documents refer to them as "summer homes," although many have been winterized).

Although the Forest Service acknowledges the need for certain amenities, permission to install or upgrade even electricity and telephone services must be requested in writing. Forget trying to build an addition until archeological and architectural surveys are evaluated. Not even fences and mailboxes are permitted. Only native plants are allowed. Ix-nay on a vegetable or flower garden. And exterior paint colors must blend in with the forest environment.

But what probably deters most people from rushing to buy a second home on Bambi's street is cash. The asking prices are clearly below area market rates, yet lenders won't touch these places. You not only have to pay cash, but you also probably won't find an insurer -- so you risk watching your money burn up the next time there's a wildfire.

Owners pay an annual fee to the Forest Service as well as property taxes and hold a permit for a fixed period of time -- generally 20 years -- during which future terms may be renegotiated. The annual fee is determined by a complicated formula based on 5% of the market value of the lot and then adjusted to reflect the absence of significant property rights normally associated with fee-simple ownerships and the public's right to have access to any portion of the lot on which the cabin is not located.

Still, more than a few hardy souls are willing to deal with these obstacles for the chance at an affordable wilderness home. Many of the cabins have remained in families for multiple generations.

When they do come on the market, at least the Southern California ones, real estate agents say they tend to be hard to sell because of the restrictions and lack of available financing.

# Gateway Ranger District Volunteer Meeting Minutes

## By Kathie Reilly

March 21, 2018 - Supervisor's Office, Arcadia

Our newsletter is on the Mt Lowe website -- [www.mtlowe.net](http://www.mtlowe.net)

Reminder: each group send reports to Guy at [guykuhn@sbcglobal.net](mailto:guykuhn@sbcglobal.net) for the next newsletter. You can send photos to Robin McGuire for the volunteer Facebook page.

These minutes contain items shared at the meeting that are considered to be of interest to everyone. All are welcome to the bi-monthly meetings.

Meeting began around 7 pm by Robin with a moment of silence for the passings of Bob Blount (District Ranger since 2009) and volunteer Peter Harrison.

**INTRODUCTIONS ALL AROUND** (please let us know of corrections or omissions)

### **FOREST SERVICE**

#### **Dennis Merkel**

- Introduced **Mathew Helt** from Inyo as new volunteer coordinator for next 120 days.
- Trail Summit training will be April 6-8. Space is limited to 60, so each group please send only 1 or 2. This is train the trainers, so you can go back and train the rest of your group. Jenny, MWBA gave more info: Friday is at Altadena Community Center for government and local managers, Saturday and Sunday are out in field on trail techniques. There is a need for more consistent and current trailbuilding techniques in the Forest.
- Artist in Residence group show is at Heritage Square Museum on April 7, 4 – 8 pm. Volunteers are needed. Contact Dennis or Chris Fabbro.
- Every Kid in Park program continues
- No volunteer training schedule yet

### **VOLUNTEERS**

**Robin and Mike McGuire** – Angeles Mountain Bike Patrol and CORBA (Concerned Off Road Bicycle Association)

**Barry Wetherby** – CTUC (California Trail Users Coalition)

**Robert Edlin**, MWBA (Mt Wilson Bicycle Association), ACT Restoration (Altadena Crest Trail). There are 5 GPS units available for trail surveys.

**Steve Messer** – CORBA and San Gabriel Mountains National Monument collaborative

**Keith Mahony**

**Alan Coles** – Bear Canyon Trail Crew, San Gabriel Trail Builders

**John Shelter** – Pacific Crest Trail Association

**Mitch** – MWBA

**Don Bremner** – Sierra Club

**USFS, Pedro Garcia** – Partnership Coordinator for Forest

**USFS, Justin** - National Resource Specialist. They are putting together a data base on trails. They have enough data for baseline. When completed, they will ask for our additional input.

**Mat** - Gateway, graffiti removal

**Rachel Grey** – new, interest in invasive plants

**Dave Gollihugh – Chantry Flats, radio**

**Andy Heller, Rick Opalka** – Angeles National Forest Fire Lookout Association (ANFLA)

**Jim** – Trail Boss

**Ledy** – SoCal Hikers and Trailbuilders, brought a cake to celebrate completion of 12W13!

**Brenda Beck** – Restoration Legacy Crew, currently working Tom Sloan Trail

## Gateway Ranger District Volunteer Meeting Minutes (CONT)

**Robert Bettner** – Palos Verdes, LA Trail Hikes

**Pete Siberell** – Mt Wilson Trail Race

**Gary Hilliard** – Angeles National Forest Trail Race July 7, AC100 August 4

**David Ledford** – Boy Scouts

**Kathie Reilly** – JPL Trailbuilders, finished Muir Peak Trail, work Mt Lowe East and West

**Susan Mumper, Brian Marcroft** – Scenic Mt Lowe Railway  
Environmental Coordinator

**Jenny Johnson** – president MWBA, working Gabrielino Trail from Switzers to dam

### REPORTS FROM GROUPS

**Boy Scouts, David Ledford:** California Trails Day is April 14 at Red Box, flyer passed around. Need cross-cut saw recertification training. Dennis said he has a trainer, needs First Aid trainer. Steve said there is free First Aid training in Ojai this Saturday. Web site says that Mt Lowe Trail Camp is closed? Dennis will find out. We are out of backing plates, let David know how many you will need for the next year. Check out the reconstructed stone pilaster gateway at Red Box trailhead into West Fork Canyon.

**CORBA, Steve Messer:** Working with MWBA on Gabrielino Trail project. Angeles National Forest is won one of 15 [USDA Forest Service Trail Maintenance Priority Areas](#), which means we will get more funds. San Gabriel Mountains National Monument collaborative for trails and recreation planning group has made their meetings public. They are on the third Thursday, 9am to 1 pm. Tomorrow it meets in Duarte, usually at Altadena Community Center. Look under San Gabriel Mountains Community Collaborative under National Forest Foundation.

**MWBA, Jenny Johnson:** Lots of interest and multiple user groups are working the Gabrielino Trail project. Have to bike in several miles, work, and bike out. About 1 mile left to do, then the contractors will do the grant work.

**CTUC, Barry Weatherby:** went over personnel changes of the Forest Service. Chief of Forest Service stepped down, Vicki Christiansen is Interim Chief of the Forest Service.

Jeffrey Vail left, Rachel Smith is Acting Forest Supervisor. Matthew Bokash is the acting deputy, Adrienne Dunfee is the acting Monument manager. Jamahl Butler replaced Bob Blount. Dennis moved to Supervisor's Office, Ray Kidd is Recreation Officer. Passed around the Angeles National Forest budget comparisons for 2014 to 2018. This year has dropped, write your representatives. Passed out Motorized and Non-motorized trails map, and a separate listing of non-motorized trails.

**ANFLA, Rick Opalka:** Hopes are to rebuild Vetter lookout this summer. Aug 11 at Chilao is ANFLA Training Day. LA County Fair will have a real lookout that was on Johnson Peak.

**SoCal Hikers and Trailbuilders, Ledy:** Showed picture of edge dropping away on Mt Lowe fire road 1 turn above Dawn Station. So far it is passable but the concern it will get worse. Forest Service knows about the blockage at Mueller Tunnel. Send emails about road conditions to Dennis.

**Mt Wilson Trail Race, Pete Siberell:** The race is May 26. Do trail maintenance the last Sunday of every month to Orchard Camp. Bikers need to be notified to not be on the trail the day of the race. It was suggested to put signs up at least a week in advance on Manzanita ridge.

**Chantry Flats, Dave Gollighugh:** Participated in Big Sheep count. None found at Crystal Lake but still enjoyable. Radios have changed frequency again. Dennis said it was only on Forest Net, volunteers are only supposed to use Admin Net, but probably still need to be changed. There will be radio training next month, contact Dave. He has copies of video on how to use radio.

CONT TO NEXT PAGE)

## Gateway Ranger District Volunteer Meeting Minutes (CONT)

**MWBA, Mitch:** There had been an experimental shuttle from REI to Chantry Flats. Now there is a new shuttle from the Gold Line to Cobb Estate for Lower Merrill Trail sponsored by LA County, Wilderness Society and City of Pasadena. His concern is not enough is done to accommodate people coming who are unfamiliar with hiking. Suggestion that shuttle driver could go over trail etiquette. They could be dropped off at Farnsworth Park for the only bathrooms. Rumor has it there are long-term plans for a building at Los Flores.

**Sierra Club, Don Bremner:** On that subject, Charles Thomas Jr., executive director of Outward Bound Adventures (OBA) is giving a talk at Eaton Canyon March 28 at 7:30 pm on "Nearby Nature: Getting the Next Generation Outdoors".

**AC100:** Slightly modified course due to endangered species. Aug 4, Wrightwood to Rose Bowl.

**USFS Volunteer Coordinator, Mathew Helt:** [mhelt@fs.fed.us](mailto:mhelt@fs.fed.us) cell 707-980-2786

His goal is to set up an on-line system for administrative information, so volunteers can concentrate on their activities.

Robin thanked everyone around 8:15.  
We thank her for the cookies!  
Enjoyed cake.

**Next Angeles National Forest Volunteer Meeting** will be Wednesday, May 16 at 7:00 pm

## A ROAD CREW IS NEEDED!!!



**Part of the Mt. Lowe road has washed away. Brian Marcroft needs help on April 14<sup>th</sup> to fix it.**

**Call him**

**562-868-8919**

**Or E-mail**

**[EMWORKS@VERIZON.NET](mailto:EMWORKS@VERIZON.NET)**



# LEARN TO LEAD!

## Trail Boss Training-Spring 2018

The USDA-Forest Service, Los Angeles River Ranger District, and the Greater Los Angeles Area Council-High Adventure Team invite you to attend the next of the on-going series of Trail Boss Training sessions.

- **When:** May 5, 2018; 8:00 am to not later than 3:00 pm.
- **Where:** Please contact one of the sources listed below, **after April 20**, for the location of this event and directions for getting there.

The objective of this High Adventure training is to train and qualify adult volunteers to organize and supervise conservation projects by sponsored groups, such as a Scout Unit. Interested persons may begin this field training whenever a session is offered and proceed through it at the convenience of their schedule and interest. Only adults may take this training, which is offered free to anyone who is interested in doing conservation work in the Angeles National Forest. Registration is not required; just show up at the indicated time and place. Persons already certified as Trail Bosses are encouraged to attend, to assist with the training and to upgrade their skills.



**The next session of Trail Boss Training is scheduled for September 1, 2018. National Trails Day, June 2, will also provide some training opportunities.** An Administrative Pass, valid for this date, will be provided for vehicles that lack an Adventure Pass.

If this is your initial session, you will be given a Trail Boss training card and a syllabus, "Trail Boss Program and Practices". A companion syllabus, "Forest Conservation", is available for those who are interested in doing conservation projects of that type. You may also be given an USDA-FS brochure, "Volunteer Applicant Packet", which briefly describes the Forest Service's volunteer program and contains an application form.

Hike Aide 3, "Full Dimension High Adventure Training", has a complete discussion of the training programs of the GLAAC-HAT. It may be downloaded from the Council High Adventure website at

<http://glaac-hat.org/HikeAids.html>.

Questions about any of them are to be directed to Anthony Green; Vice Chair-Training: (310)626-3566 (C); e-mail, [agreen.bsa@gmail.com](mailto:agreen.bsa@gmail.com)

### \Clothing and Equipment

Persons attending need to be dressed and equipped to do a full day of trail work. The fashion conscious volunteer wears long pants, long sleeve shirt, work boots, gloves, and a broad-brimmed hat. These are supplemented with sunscreen/sun block, dark glasses, insect repellent, and lots of water. Sneakers/sport shoes are not appropriate wear when swinging a Pulaski and moving large rocks. Conservation project sites tend to be hot, sunny, dusty, and lunchrooms for insects. Bring your lunch and whatever snacks you need to get through the day – these training sessions are usually at remote sites in the Angeles.

### Additional Information

- USDA-Forest Service, Los Angeles Gateway Ranger District, Little Tujunga Station, (Daytime): Dennis Merkel, Recreation Officer (818) 899-1900 X229 email: [dmerkel@fs.fed.us](mailto:dmerkel@fs.fed.us) .
- Dave Ledford, GLAAC-HAT Trail Boss Training: 1-310-373-2111 email: [gdledford@verizon.net](mailto:gdledford@verizon.net) Training Bulletin GLAAC-HAT October 2017

# LEARN TO LEAD!



## **TRAIL BOSS Training 2018 Become a USFS approved Trail Boss Supervise Trail Maintenance for your group. ( Great Eagle Projects! )**

Let us train you and other adults in your group so that you are qualified to do Trail Surveys and set up projects and complete them on your own.

### **Purpose:**

To provide properly trained personal with the ability to supervise either "Trail Blazing" or "Forest Conservation" program projects at the unit level.

All Trail Bosses will be trained by USFS Personnel or their approved Trail Boss Trainer.

### **Requirements:**

**Must be** 18 or older.

**Complete 4 days** of 6 hours each in training exercises with the Trail Boss Program.

**Conduct an approved Weekend project.** Minimum 10 hours with your unit. (or another unit) under your supervision, and have it checked out by the Trail Boss trainer.

**(Training days do not have to be consecutive days, weeks, or even years).**

**Training objectives are:** Tool Safety, Condition Survey, Brush Clearing, Tread Work, French Drains, Soil Sacks, Water Bars, Switchback Construction, Tread Support, Etc.

**Bring: Gloves, Hat, Water and Lunch, 10 essentials, Day pack, Work clothes.**

**Available training days in 2018 are Apr. 21-22. May. 5-6.**

**Call to confirm** training day for yourself. ( Course cancels if no calls )

**We Meet at the McDonald's at Bouquet Canyon Rd. and Valencia Blvd. in Valencia at 8:00 AM**

### **Contact:**

**Patrick Aubuchon, Chief Trail Boss.  
818-781-7465 - bigaub@sbcglobal.net**

# Trails Skills College

## Columbia Cascades Trail Skills College

You're invited! The Columbia Cascades Trail Skills College is a free weekend event for local volunteers to learn about trail maintenance and stewardship. Beginners and experts alike can benefit from Trail Skills College courses like Drainage Design & Drain Dips, Tread Re-Construction, Crew Leadership and more.

Trail Skills College is offered free of charge in an effort to inspire citizen stewardship of trails. In exchange for attending the training, we encourage you to volunteer at least 16 hours of work on trail projects in the coming year.

The 2018 Columbia Cascades Trail Skills College is possible thanks to the U.S. Forest Service, PCTA's Mount Hood Chapter, Washington Trails Association, Trailkeepers of Oregon, Backcountry Horsemen of Oregon, Backcountry Horsemen of Washington, Mount St. Helens Institute and the Port of Cascade Locks.

**When is it?** April 20-22, 2018

**Where is it?** Port of Cascade Locks, Oregon

**Are meals and lodging provided?** Free camping is available to all participants on Friday and Saturday. Tent camping is available on Thunder Island and there are a limited number of RV spaces in the Port. Meals will be provided at no cost starting with dinner on Friday and ending with lunch on Sunday.

**What's the fitness level of Trail Skills College?** The fitness level will vary depending on the classes you select during registration. However, all participants should be prepared to hike a minimum of 1-2 miles while carrying personal gear and tools. Participants should also be prepared for the hands on learning opportunities in many of these classes, resulting in 6-8 hours of active trail maintenance per day.

**What classes are being offered?** Detailed descriptions of all the courses are available here.

[https://www.pcta.org/wp-content/uploads/2018/02/TSC\\_Course\\_Descriptions\\_2018.pdf?x36837](https://www.pcta.org/wp-content/uploads/2018/02/TSC_Course_Descriptions_2018.pdf?x36837)

## Friday, April 20

- First Aid and CPR
- 107 Hand Tool Field Maintenance (1/2 Day Class)
- 204 Cooking and Camping with the Crew
- 398 Hazards of the Burn Zone and Emergency Scenarios
- 103 Basic Saw Crew Training
- 203 Waterbars and Checks
- 206 New Trail Construction

## Saturday, April 21

- First Aid and CPR
- Intro to Trail Maintenance Day One (1/2 Day Class)
- Intro to Trail Maintenance will cover curriculum from course numbers 100, 101, and 102
- 104 Intro to Chainsaw
- 205 Tread Re-Construction
- 300 Rock Work
- 398 Turnpikes
- 201 Drainage Design and Drain Dips
- 206 New Trail Construction
- 306 Working with Packers and Packstock

## Sunday, April 22

- Intro to Trail Maintenance Day Two (Full Day Class)
- 205 Tread Re-Construction
- 207 Trail Decommissioning and Wildland Restoration
- 304 Crew Leadership: Managing Volunteers
- 201 Drainage Design and Drain Dips
- 206 New Trail Construction
- 297 Chainsaw Practicum
- 398 Working with Mechanical Advantage

## Saw Training and Certification

• Chainsaw and crosscut training and certification will be available the following weekend, April 27-29, at Wind River.

More details, including registration instructions, are available here:

<https://www.pcta.org/volunteer/trail-skills-college/saw-training/wind-river-saw-training-and-certification-weekend/>

## How do I register for Trail Skills College?

- Online registration will open to the public in March.
- Follow along! Don't forget to follow the event on <https://www.facebook.com/ColumbiaCascadesTSC>

# Trails Skills College

## West Cascades Trail Skills College

You're invited! Please join the Pacific Crest Trail Association, High Cascade Forest Volunteers and the staff from the Willamette and Deschutes National Forests at the annual West Cascades Trail Skills College.

This training weekend is designed to train new and returning volunteers in a variety of topics regarding trail maintenance and stewardship. Come meet like-minded community members who are committed to maintaining and providing quality recreation experiences in central Oregon.

This training event is offered free of charge in an effort to inspire citizen stewardship of our trails.

Camping and meals are also provided at no cost throughout the weekend. In exchange, we ask participants to donate at least 16 hours volunteering in the coming year on the many projects hosted by the High Cascades Forest Volunteers and the Pacific Crest Trail Association.

**When is it?** May 4-6, 2018

**Where is it?** White Branch Camp

61500 McKenzie Hwy, McKenzie Bridge, OR 97413

**How do I register?** Registration is open at the <http://www.highcascadesvolunteers.com/index.html>

**Where can I learn more?** All the details for West Cascades College are on the High Cascades Forest Volunteers website.

<http://www.highcascadesvolunteers.com/index.html>

## Allingham Trail Skills College

You're invited! Please join the Pacific Crest Trail Association, High Cascade Forest Volunteers and the staff from the Willamette and Deschutes National Forests at the annual Allingham Trail Skills College. This training weekend is designed to train new and returning volunteers in a variety of topics regarding trail maintenance and stewardship.

Come meet like-minded community members who are committed to maintaining and providing quality recreation experiences in central Oregon.

This training event is offered free of charge in an effort to inspire citizen stewardship of our trails. Camping and meals are also provided at no cost throughout the weekend. In exchange, we ask participants to donate at least 16 hours volunteering in the coming year on the many projects hosted by the High Cascades Forest Volunteers and the Pacific Crest Trail Association.

**When is it?** June 1-3, 2018

**Where is it?** Near Sisters, Oregon

**How do I register?** Please visit the [High Cascades Forest Volunteers website](http://www.highcascadesvolunteers.com/index.html) for more information.

**Where can I learn more?**

All the details for Allingham Trail Skills College are on the [High Cascades Forest Volunteers website](http://www.highcascadesvolunteers.com/index.html).

## Big Bend Trail Skills College

**When is it?** June 8-10.

More details about the 2018 event, including class and registration information, will be available in early spring

**If you have questions about Trail Skills College, contact PCTA's Volunteer Program** at 916-285-1838 or [volunteer@pcta.org](mailto:volunteer@pcta.org).

## Tahoe Trail Skills College

**When is it?** July 20-22.

More details about the 2018 event, including class and registration information, will be available in early summer.

**If you have questions about Trail Skills College, contact PCTA's Volunteer Program** at 916-285-1838 or [volunteer@pcta.org](mailto:volunteer@pcta.org).

## USDA Forest Service Angeles National Forest

# California Trails Day 2018

**DATE:** April 14, 2018, meet at 8:00 AM

**REGISTRATION:** 8:00 to 8:30 AM

**LOCATION:** Meet at Red Box - east parking lot

**EVENT:** The USDA Forest Service, National Forest Foundation and associated ANF volunteer organizations will celebrate California Trails Day on April 14, 2018. The celebration will include 4-6 hours of trail work on the Red Box/Colby Canyon Trail System. This event is a partnership between the volunteer groups of the Angeles National Forest, the USFS and the NFF. We will break for lunch and a short ceremony about California Trails Day at 1:00 PM in the Red Box parking lot. Activities will end at 3:30 PM.



This activity is open to all volunteers, including sponsored groups. For those volunteering for trail work for the first time, please identify yourself to the registrar, so we can arrange for a Trail Boss to provide instruction and proper tools. Please bring your personal protective equipment listed below.

### **Personal Equipment to Wear while Working:**

Work gloves, work shoes, work clothes (long sleeve shirts and long pants), sun protection hat, hard-hat (can be provided if needed), Ten Essentials (include a personal First Aid kit), Water (2 quarts), high energy snacks. Be prepared to hike about a mile and work until 12:30.

**DIRECTIONS:** From the 210 Freeway in La Canada, go north on Angeles Crest Highway (Hwy 2) to Clear Creek Junction (9 miles). Continue on Angeles Crest Highway and drive 4.6 miles to Red Box. Park in the east parking lot. Allow 45 minutes driving time from the 210 Freeway. Please carpool if possible.

### **For Additional Information, Please Contact one of the Following:**

**USDA Forest Service, Angeles National Forest, Forest Supervisors Office**

**(Daytime): Dennis Merkel, Volunteer Coordinator**

**(626) 574-5201 email: [dcmerkel@fs.fed.us](mailto:dcmerkel@fs.fed.us)**

**(Evenings): David Ledford, Volunteer Leader, Training**

**(310) 373-2111 email: [GDLedford@verizon.net](mailto:GDLedford@verizon.net)**

**Additional Training Opportunities Scheduled for the Future:**

**May 5, 2018, Advanced Leader Training (Front Country)**

**June 2, 2018, National Trails Day (Basic Techniques)**

**September 1, 2018, Advanced Leader Training (High Country)**

**California Trails Day and National Trails Day training activities are open to all**

## JPL HIKING +

## JPL TRAILBUILDERS SATURDAYS

(Rain on morning of outing cancels the outing. Call leader if not sure) **March 17**

<https://www.meetup.com/The-So-Cal-Hikers/events>

California Trails Day (flyer to follow)

April 14, 2018

Volunteer newsletter is on the Mt Lowe website -- [www.mtlowe.net](http://www.mtlowe.net)



**Bi-monthly Volunteer meetings are the third Wednesday of every other month. Next meeting is March 21 at 7:00 p.m. at Angeles National Forest Supervisor's Office, 701 N. Santa Anita Avenue, Arcadia.**

**LEADERS:** Kathie Reilly 626-379-8429 Jack Russell 562-861-3187

**CLASSIFICATION:** Easy to strenuous, up to you. **COST:** none **TRIP LIMIT:** none

### **DESCRIPTION: WHAT HAPPENED January and February**

No January outing since the Forest was closed on the weekend of our scheduled outing due to the National Budget delays.

In February, we worked Mt Lowe West Trail, driving up the Mt Lowe fire road and starting at the bottom above the Mt Lowe Campground. Lots of tread widening and brush cutting was done.

Our second outing was our annual maintenance of Muir Peak before the annual Sierra Club convergence hikes. Lot of overgrown buck thorn and Manzanita. It's great that the fire roads have been recently cleared, didn't scratch my car this time.



Clear view from Muir Peak Feb 24, 2018



Lunch on Muir Peak

**WHAT'S PLANNED:** Depending upon the number of people showing up and the weather, we can do trail maintenance of tread widening and cutting back brush on any of our usual trails: 1) Mt Lowe West Trail driving up Mt Lowe fire road to where it starts above Mt Lowe Campground. 2) Mt Lowe East Trail at the mid-section hiking from Eaton Saddle past the junction to the summit of Mt Lowe down towards Inspiration Point. 3) Colby Canyon Trail from where we left off from Angeles Crest. As you can see, all of the work is around the halfway points of the trails, which means more hiking.

**BRING:** Dayhike gear (daypack, lunch, lots of water), sun screen, bug repellent, hat, and work gloves. Please make sure you wear long sleeves, long pants and boots in order to be able to use tools. You can bring your own tools or are welcome to use those from our group supply. We provide hard hats.

**MEET:** At 8:15am at ball diamonds parking lot in the lower part of Hahamongna Park. Get off the 210 freeway at Berkshire off-ramp and follow the signs for JPL and Hahamongna Park. Once you turn into the Park, go down the road to the left, make a right at the bottom and look for us in the parking lot, or the overflow down below. We sign in and form carpools, leaving at 8:30 sharp, returning at the latest 4 PM. The leaders take passengers, but make sure you have plenty of gas in case we need more drivers (riders can give drivers \$1 towards gas). If you need to leave early, notify the leaders at sign-in time

**Next tentative dates May 5, June 23, National Trails Day June 2, 2018**

# Volunteers Needed

## VOLUNTEERS WANTED!

- ☞ Do you love the forest?
- ☞ Do you love to teach children?

***If so, here is a great volunteer opportunity!!!***

The San Gabriel Mountains Heritage Association (SGMHA) is seeking volunteer educators for our school-based field trip program. This established program serves schools throughout the San Gabriel Valley at facilities at the Mt. Baldy Visitor Center and the San Gabriel Canyon Environmental Education Center. Volunteer educators are trained to teach various hands-on programs for school classes that range from K - 12 and include subjects such as Native American studies, Geology, California Gold Rush, Plant ID, Water Ecology, Local History, Environmental Conservation, and the forest's flora and fauna.



Prior teaching experience is not required. Volunteer commitment is flexible but we are looking for volunteers who are willing to learn the program and participate throughout the school year.

***Volunteer and make a difference  
for our children and for our forest!!***

If interested please contact:

Dave Baumgartner

Program Manager

909 982-2879 or 626 241-6407

email: [info@sgmha.org](mailto:info@sgmha.org)

# Volunteers Needed



**City of Glendale  
Community Services & Parks Department**

## Happy Birthday, John Muir!

### Wilderness Workday



Snacks and drinks  
will be provided

You must call us at  
(818) 548-3795 to  
reserve your place

Wear sturdy shoes,  
protective clothing,  
and a hat

Bring your water  
bottle, sun screen,  
and gloves

**Saturday, April 21, 2018**

**8:00 A.M. - Noon**

**Deukmejian Wilderness Park**

**3429 Markridge Road, Glendale, CA 91214**

Born on **April 21, 1838**, John Muir, was a Scottish-American naturalist, author, conservationist, philosopher, and early advocate for the preservation of wilderness in the United States.

Here's your chance to celebrate John Muir's birthday during our monthly Wilderness Workday as we remove invasive plants, water our recently-planted trees, and preserve a little wilderness of our own.

We have tasks for all ages and abilities. This is a great event for families, individuals, groups, clubs, and students needing Community Service hours.

Հայերեն տեղեկությունների համար զանգահարել  
հետևյալ հեռախոսահամարով (818) 548-2000

**Para información en español, llame a (818) 548-2000**

#### Sponsored By:



**REASONABLE ACCOMMODATIONS WILL BE MADE UPON REQUEST.  
PLEASE NOTIFY US WITHIN 72 HRS PRIOR TO EVENT DATE.**



## Volunteers Needed

# The Great Los Angeles River Clean Up

The LA River needs you! Each spring, Friends of the LA River (FoLAR) makes sure the LA River is a playground for every Angeleno. Our Annual River CleanUp, the largest of its kind, mobilized over 10,000 volunteers in 2017 alone. In the past 28 years, an estimated 50,000 FoLAR-led volunteers have removed over 400 tons of garbage from the LA River that would have otherwise washed into the Pacific Ocean.

### DATES + LOCATIONS

- **Upper River / April 14 / 9:00 am – 12:00 noon**  
Sepulveda Basin / Balboa Sports Complex | Glendale Narrows Riverwalk
- **Mid River / April 21 / 9:00 am – 12:00 noon**  
Los Feliz Blvd at Bond Park | Fletcher / Bowtie Parcel | Marsh Park | The Frog Spot
- **Lower River / April 28 / 9:00 am – 12:00 noon**  
Compton Creek at Del Amo Metro Station | Willow Street Estuary | Golden Shore Marine Reserve

### HOW TO SIGN UP + WAIVERS

To participate all volunteers must register and complete a waiver online at

[www.folar.org/cleanup-2018](http://www.folar.org/cleanup-2018).

### GROUP REGISTRATION

Group registration is open to any group of ten or more volunteers and is available at [www.folar.org/cleanup-2018](http://www.folar.org/cleanup-2018). Group organizers should instruct teammates to register, fill out their waiver online, and add their group name to the “Organization” field of the waiver. Make sure you tell everyone on your team to use the same name when noting your group!

### QUESTIONS + FAQ

If you have any questions, read FAQs at <https://folar.org/action/#cleanup-faqs> call 323.223.0585 or email [contact@folar.org](mailto:contact@folar.org).

## 29TH ANNUAL LA GRAN LIMPIEZA THE GREAT LOS ANGELES RIVER CLEAN UP



**JOIN THE CLEANUP  
PARTÍCIPE EN LA LIMPIEZA**

**April 14, 2018 - UPPER RIVER**  
Sepulveda Basin / Balboa Sports Complex  
Glendale Narrows Riverwalk

**April 21, 2018 - MIDDLE RIVER**  
Los Feliz Blvd at Bond Park  
Fletcher Drive / Bowtie Parcel  
Marsh Park  
The Frog Spot

**April 28, 2018 - LOWER RIVER**  
Compton Creek at Del Amo Metro Station  
Willow Street Estuary  
Golden Shore Marine Reserve

**Sign up now to get involved  
Regístrate ahora para involucrarse**

**FOLAR.ORG/CLEANUP-2018**

 **FRIENDS OF THE  
LA RIVER**

# AC100 SCHEDULE

**AC100 WEBSITE:** <http://www.ac100.com/>

**Gary Hilliard, Director at:** [garyh@anftrailrace.com](mailto:garyh@anftrailrace.com)

- The race will be on Aug 4, 2018

## **April 21, 2018 7:00AM (Saturday): Trail Work, Idlehour West**

- **Trail Work Outing is restricted to 20 volunteers who email RSVP to Gary**
- Meet at Loma Alta Park (Altadena, CA). Meet near 544 W Palm St, Altadena, CA 91001
- Carpool to Trail Work at Idlehour Trail West Side (We need High Clearance Vehicles to transport Volunteers).
- We will drive up Mt. Lowe Railway Road, to Sam Merrill Aid Station / Checkpoint)

## **May 13, 2018 7:00AM (Saturday): Trail Work, Idlehour East**

- **Trail Work Outing is restricted to 20 volunteers who email RSVP to Gary**
- Meet at Loma Alta Park (Altadena, CA). Meet near 544 W Palm St, Altadena, CA 91001
- Carpool to Trail Work at Idlehour Trail East Side (We need High Clearance Vehicles to transport Volunteers).
- We will drive up Mt. Wilson Toll Road, to Idlehour Aid Station / Checkpoint

## **June 15 - 17, 2018 Training Week**

AC100 will present an overnight training weekend from June 15-17th at a cost of \$164. The camp will be held near Three Points and include accommodations for 2 nights, 5 meals, 3 training runs covering terrain from Vincent Gap to Red Box with aid stations, and various post run activities including race planning seminars, games, and bonfires. Signups are limited to 50 runners and open to all runners.

You do not have to be registered to run the 2018 AC100 in order to participate at this camp.

<https://www.ac100.com/trainingWeek.asp>

## **General Procedure for Trailwork Days:**

**Contact Gary Hilliard for Trailwork RSVP and confirmation >** [garyh@anftrailrace.com](mailto:garyh@anftrailrace.com)

- Sign in and provide address and emergency phone number for Trailwork Days
- We have a Pre-Trailwork Safety Meeting.
- Purchase and display your USFS Adventure Pass. Required when parking in the Angeles National Forest. \$5 a day/\$30 a year Adventure passes available at REI Stores, USFS locations, most La Canada / Pasadena sports stores and some gas stations near the Forest and Wrightwood stores.

## **Things to bring and expect for trail work:**

- Wear long pants and a long-sleeve shirt (dress for temps 35° to 80°) ...bring gloves.
- Boots or Trail shoes (No Sandals, flip-flops, deck shoes, etc.).
- Food & water (enough for a full day's hike/work) ...and be mobile.
- Use of small backpacks or hydration packs works best.
- Carrying lunch boxes, coolers, or bags of food and supplies is not recommended.
- Personal items (as-needed): Sunscreen, bug repellent, first-aid, insect medication.
- Energy and positive attitude.
- The Angeles National Forest is "OUR FOREST" and needs our help to care for it

# THE ANGELES NATIONAL FOREST TRAIL RACE SCHEDULE

ANF Trail Race website: <http://www.anftrailrace.com/>

Gary Hilliard, Director at: [Garyh@anftrailrace.com](mailto:Garyh@anftrailrace.com)

- The race will be on July 07, 2018
- The 2018 Angeles National Forest Trail Race Trail-work Schedule is Posted below.
- You MUST e-mail Gary during the week before the trail-work day: [Garyh@anftrailrace.com](mailto:Garyh@anftrailrace.com)
- Gary Hilliard will lead the Trailwork

## April 21, 2018 7:00AM (Saturday): Trail Work, Idlehour West

- Trail Work Outing is restricted to 20 volunteers who email RSVP to Gary
- Meet at Loma Alta Park (Altadena, CA). Meet near 544 W Palm St, Altadena, CA 91001
- Carpool to Trail Work at Idlehour Trail West Side (We need High Clearance Vehicles to transport Volunteers).
- We will drive up Mt. Lowe Railway Road, to Sam Merrill Aid Station / Checkpoint)

## May 13, 2018 7:00AM (Saturday): Trail Work, Idlehour East

- Trail Work Outing is restricted to 20 volunteers who email RSVP to Gary
- Meet at Loma Alta Park (Altadena, CA). Meet near 544 W Palm St, Altadena, CA 91001
- Carpool to Trail Work at Idlehour Trail East Side (We need High Clearance Vehicles to transport Volunteers).
- We will drive up Mt. Wilson Toll Road, to Idlehour Aid Station / Checkpoint

## General Procedure for Trailwork Days:

- Contact Gary Hilliard for Trailwork RSVP and confirmation > [garyh@anftrailrace.com](mailto:garyh@anftrailrace.com)
- Sign in and provide address and emergency phone number for Trailwork Days
- We have a Pre-Trailwork Safety Meeting.
- Purchase and display your USFS Adventure Pass. Required when parking in the Angeles National Forest. \$5 a day/\$30 a year Adventure passes available at REI Stores, USFS locations, most La Canada / Pasadena sports stores and some gas stations near the Forest and Wrightwood stores.

## Things to bring and expect for trail work:

- Wear long pants and a long-sleeve shirt (dress for temps 35° to 80°) ...bring gloves.
- Boots or Trail shoes (No Sandals, flip-flops, deck shoes, etc.).
- Food & water (enough for a full day's hike/work) ...and be mobile.
- Use of small backpacks or hydration packs works best.
- Carrying lunch boxes, coolers, or bags of food and supplies is not recommended.
- Personal items (as-needed): Sunscreen, bug repellent, first-aid, insect medication.
- Energy and positive attitude.
- The Angeles National Forest is "OUR FOREST" and needs our help to care for it

# Volunteers Training

## Angeles National Forest Fire Lookout Association

For more information go to <https://www.anffla.org/training/>

### New Volunteer Training

Your first step in becoming a Fire Lookout with ANFFLA is reading the [“What to Expect” letter](#) from our President. [Download the letter here.](#)

**YOU MUST ATTEND ALL THREE CLASSES**, we offer them at two different times. You need to attend only one of each of the classes.

#### Class 1: Orientation

- Tuesday, May 1  
6:00 pm — 9:00 pm
- Saturday, May 5  
10:00 am — 1:00 pm

#### Class 2: Interpretation – Natural History

- Thursday, May 3  
6:00 pm — 9:00 pm
- Saturday, May 5  
2:00 pm — 5:00 pm

#### Class 3: Operations

- Saturday, May 12  
9:00 am — 3:00 pm  
**bring a lunch**

Registering for New Volunteer Training is not required but it is very helpful for us in our planning. Please take a moment to let us know which class you plan to attend. [RSVP FOR TRAINING](#)

#### **New Volunteer Training Location**

All new volunteer classes will be held at:

**Angeles National Forest Supervisor’s Office  
701 N. Santa Anita Ave.  
Arcadia, CA 91006**

## Returning Volunteer Training

**RETURNING VOLUNTEERS MUST ATTEND THIS CLASS**, we offer it at two different times.

You need to attend only one of the classes.

Returning lookouts may be required to complete either Operations and/or a new In Tower Training depending on how many volunteer hours you completed in the previous season. **You should have received and e-mail with instructions.** If you have any questions, please [contact us](#).

### Reconnect Training

- Wednesday, April 11, 6:30pm– 9:30pm
- Saturday, April 14, 10:00am — 1:00pm

Registering for Reconnect Training is not required but it is very helpful for us in our planning. Please take a moment to let us know which class you plan to attend.

[RSVP for Reconnect](#)

#### **Reconnect Training Location**

**Both Reconnect Training will be held at:**

**Angeles National Forest Supervisor’s Office  
701 N. Santa Anita Ave.,  
Arcadia, CA 91006**

# Volunteers Training



United States Department of Agriculture

## ANGELES NATIONAL FOREST TRAIL STEWARDSHIP SUMMIT



**APRIL 6 - 8, 2018**

Altadena Community Center, 730 E Altadena Dr, Altadena, CA 91001

Learn about **sustainable trails** and **sustainable recreation** including:

- Trails usage, public access, maintenance standards and more
- Collecting trail data, improving trail data quality, trail projects and targets, trail use designations
- Use of handheld equipment including clinometer and trail maintenance tools
- Trail assessments including GPS and GIS
- Public outreach, volunteer opportunities, volunteer safety and liability issues
- "Train-the-Trainer" type instruction for leaders to pass on to trail crew members

**SPACE IS LIMITED**  
**REGISTER ON EVENTBRITE**  
<http://bit.ly/2Buigfc>

Contact: Dennis Merkel, [dcmerkel@fs.fed.us](mailto:dcmerkel@fs.fed.us)

Special thanks to the following event sponsors: National Forest Foundation, Concerned Off-Road Bicyclists Association, and the Mt. Wilson Bicycling Association

# Volunteers Training



City of Glendale  
Community Services and Parks Department

## “Mountain Lions in Our Midst... Truths About the Urban Puma” Friday Night Lecture

Snacks and drinks  
will be served

This event is  
FREE!

You must call us at  
(818) 548-3795 to  
reserve your place

This program is  
recommended for  
ages 16 and older.



**Friday, April 13, 2018**

**6:30 P.M. - 8:30 P.M.**

**Deukmejian Wilderness Park**

**3429 Markridge Road, Glendale, CA 91214**

Dana Stangel, Urban Wildlife Specialist and Executive Director of Teranga Ranch, will discuss the mountain lions that call the Verdugo and San Gabriel mountains home. Join us to learn about mountain lion habits and habitats; how to tell the difference between a mountain lion and a bobcat; how to identify mountain lion tracks; how often they are actually in our backyards and how wildlife overpasses will make a difference.

**Sponsored By:**



and



Հայերեն տեղեկությունների համար զանգահարել

հետևյալ հեռախոսահամարով (818) 548-2000

Para información en español, llame a (818) 548-2000



REASONABLE ACCOMMODATIONS WILL BE MADE UPON REQUEST.

# VOLUNTEERS AT WORK



**Mike McGuire cleaning the trail of brush**

**Photos by Robin McGuire**

**Working on the closed section of the Gabrielino trail with MWBA**

**Photos by Robin McGuire**



**BEFORE**

**Pat Bylard removing the graffiti**

**Photo by Pat Bylard**



**AFTER**

# VOLUNTEERS AT WORK



**The Angeles mountain bike patrol removing trees from the El Prieto trail**

**Photos by Robin McGuire**

**Thurman working on the Tom Sloane trail**

**Photos by Brenda Beck**



**Lauren proudly looking over the section of Tom Sloane trail she finished working on**

**Photos by Brenda Beck**



# VOLUNTEERS AT WORK



**Bob Fisher removing Graffiti on Dawn Mine trail**

**Photos by Brenda Beck**

**MWBA CREW hauling and working on the Gabrielino trail between Switzers and Ken Burton**

**Photos by Erik Hillard**



# VOLUNTEER FUN

The City of Glendale invites you to



**Sunday, April 15, 2018**

**2:00 PM - 4:00 PM**

**Pacific Park Community Center**  
501 S. Pacific Ave, Glendale, CA 91204

## EcoHero Show



**Become a superhero at the EcoHero Show!**

The EcoHero show is an environmental, music based performance that is fun for the whole family!

Show starts at 2:30 pm

### Family Fun:

- Pack a Zero-Waste Picnic
- Visit the recycling truck
- Play games
- Win prizes

For more information, contact  
(818) 548-3916 or visit [GlendaleRecycle.com](http://GlendaleRecycle.com).

Para información en Español, llame al (818) 548-3916.

Հայերեն տեղեկությունների համար, խնդրում ենք զանգահարել (818) 548-3916.



@MyGlendalePW @MyGlendale #EarthDay2018 #MyGlendale #GlendaleRecycles

# VOLUNTEER FUN

**Heritage Square Museum**  
presents

**GROUP  
SHOW**

ANGELES NATIONAL FOREST

**ARTIST IN  
RESIDENCE**



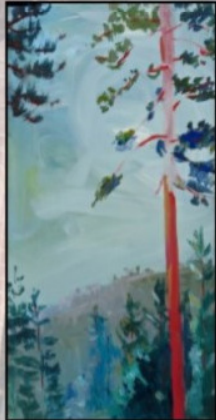
**FREE RECEPTION**

**SATURDAY 4/7/18**

**4 TO 8, CEREMONY AT 6**

**HERITAGE SQUARE MUSEUM  
3800 HOMER ST, LA 90031**

LIMITED HOME TOURS (5 & 6:30)  
AT RECEPTION FOR \$5 DONATION



**FEATURING WORKS FROM TEN ANGELES NATIONAL FOREST ARTISTS**

**IN ADDITION, WORKS WILL BE ON DISPLAY SATURDAY & SUNDAY, APRIL 7 & 8  
DURING NORMAL MUSEUM HOURS, 11:30-4:30 (REGULAR \$10 ADMISSION APPLIES)**

ARTIST IN RESIDENCE IS A VOLUNTEER PROGRAM AND PUBLIC LANDS EDUCATION PROGRAM OF  
THE ANGELES NATIONAL FOREST AND SAN GABRIEL MOUNTAINS NATIONAL MONUMENT

# VOLUNTEER FUN

## 2018 Live Music Events

<http://adamspackstation.com/season/2018/>

Join Us & These Artists for an Afternoon of Great Music

04/15/2018  
12:00-01:30 Latimer & Osborn  
01:30-03:15 Slot Available  
03:30-05:00 Slot Available

04/29/2018  
12:00-01:30 Wild Mountain Mystics  
01:45-03:15 Tim Tedrow  
03:30-05:00 Slot Available

04/22/2018  
12:00-01:30 Ocho-X  
01:45-03:15 Bryan Chan  
03:30-05:00 Korpus Kristy

05/06/2018  
12:00-05:00 Barnyard jamboree

## VOLUNTEER GROUP NEWS

**AC100** <http://www.ac100.com/>  
Contact Gary at: [garyh@anftrailrace.com](mailto:garyh@anftrailrace.com)

- The 2018 AC100 Trail Race Trail-work Schedule is on the AC100 Schedule page.

### Welcome

The San Gabriel back country retains much of the natural beauty, if not the primitive wilderness of yesteryear. Thanks largely to the foresight and capable supervision of the U.S. Forest Service and hundreds of volunteers. Picnic areas and campgrounds have been constructed with minimum displacement of the natural setting.

Those desiring to see this primitive wilderness in a single day are invited to participate in the Angeles Crest 100 Mile Endurance Run.

### Adventure Riders Moto Trail Crew

Joel Paez [basecamp4adv@gmail.com](mailto:basecamp4adv@gmail.com)

We are a group of adventure-minded enthusiasts on dual sport and adventure bikes who love to promote the exploration of places where the pavement ends as well as travelling on back-roads as the alternate route. We also enjoy meeting people, making new friends, promoting public land stewardship and sharing experiences For your convenience, use this forum as your platform for adventure.

Enjoy the ride and see you back in camp.

### Angeles Mountain Bike Patrol

[m.rmcquire@hotmail.com](mailto:m.rmcquire@hotmail.com)

Mt Pacifico Campground is our adapted Campground. The fire road to get there are closed due to major rock slides and debris.

Our mission is to provide educational and a responsible image to all trail users. To encourage rider's to obey forest regulations

## ANGELES NATIONAL FOREST FIRE LOOKOUT ASSOCIATION

<http://www.anffla.org>

Pam Morey [pammorey@fs.fed.us](mailto:pammorey@fs.fed.us)

Forest Care Program Coordinator

909-744-9510 ext. 125

- **BECOME A FIRE LOOKOUT!** (Check the Volunteer Training pages)  
For more information about becoming a fire lookout: [pammorey@fs.fed.us](mailto:pammorey@fs.fed.us) or  
909-744-9510 ext. 125
- **Help support ANFFLA every time you shop!**  
Register your Ralphs Club Card and your Food4Less card and ANFFLA will receive a donation every time you shop. It's an easy to help support our efforts and costs you nothing!

## The Angeles National Forest Trail Race formally the Mt. Disappointment Endurance Run

ANF Trail Race website: <http://www.anftrailrace.com/>

Gary Hilliard, Director at: [Garyh@anftrailrace.com](mailto:Garyh@anftrailrace.com)

- The race will be on July 07, 2018
- The 2018 Angeles National Forest Trail Race Trail-work Schedule is on the ANGELES NATIONAL TRAIL RACE SCHEDULE page.

You MUST e-mail Gary during the week before the trail-work day: [Garyh@anftrailrace.com](mailto:Garyh@anftrailrace.com)

### What does it take to Run the 2018 Angeles National Forest Trail Race?

All 3 distances are majestic, challenging, and all within the San Gabriel Mountains of the Angeles National Forest. The 60K has 7400 feet, the 50K has 5700 feet, and the 25K has 3300 feet of elevation gain.

Our USFS approved trail maintenance group maintains all the trails we use. We have race-shirts, aid-stations, finisher's medals, awards, and a runner's post-race meal. The final climb up Mt Wilson's Kenyon Devore Trail tests each runner in a semi-wilderness. Have an Angeles National Forest adventure and come run the Angeles National Forest Trail Race.

## Arroyos and Foothills Conservancy

<http://www.arroyosfoothills.org/>

John Howell, (626) 796-0782 [johnrhowell@earthlink.net](mailto:johnrhowell@earthlink.net)

For more calendar details go to <http://www.arroyosfoothills.org/event-calendar/>

- April 1<sup>th</sup> Rosemount Preserve Open Gate
- April 7<sup>th</sup> Rubio Canyon Guided Hike with Edward Parker
- April 14<sup>th</sup> Rosemount Preserve Restoration
- April 15<sup>th</sup> Cottonwood Canyon Guided Meditation
- April 15<sup>th</sup> Rosemont Preserve Spring Equinox Celebration
- April 21<sup>st</sup> Gardening Morning, Old Marengo Park
- April 22<sup>nd</sup> All Saints Church Earth Day
- April 28<sup>th</sup> Rosemont Preserve Tour with Dana Stangel

**BEAR CANYON TRAIL CREW**

[bearcanyontrailcrew@gmail.com](mailto:bearcanyontrailcrew@gmail.com)

<https://sites.google.com/view/bearcanyontrailcrew/home>

**Bear Canyon Trail Crew: schedule!**

- Apr. 27<sup>th</sup>
- May 19<sup>th</sup>

**Come and Join us!**

**Thank you**

**Alan Coles**

**Big Santa Anita Canyon**

<http://www.bigsantaanitacanyon.com/>

- Check out the music at Adams Pack Station (Check out the Volunteer Fun Pages)
- Open Year round, 6 am to 8 pm every day.
- The road is gated and the gate is locked at night. Be sure to return to your car before 7:30 pm or you may not get out! During and after heavy rains, fires, or after significant earthquakes, and during fire alerts the road may be closed.
- The Sierra Madre Police Dept. is in charge of locking/unlocking the gate. If you are concerned that the road might be closed you can call them for info: 626 355-1414.
- Adams Pack Station Contact: Friday, Saturday & Sunday 8:00 am - 5:00 pm (626) 447-7356

**Blight Busters Trail Crew**

Danny Treadway [dayhiker86@yahoo.com](mailto:dayhiker86@yahoo.com)

**Boy Scouts of America Greater Los Angeles Area Council (GLAAC)**

<http://glaac-hat.org>

- May 5<sup>th</sup>, 2018 Trialboss Training (Check the Learn to Lead pages)

**California Trail Users Coalition (CTUC) <http://www.ctuc.info/ctuc/>**

Events Calendar: <http://www.ctuc.info/ctuc/index.php/ctuc-calendar>

- April 11<sup>th</sup> CTUC National Forest Association Angeles Meeting  
Come and Join Us CTUC meets at 6:00 p.m. at 3550 Foothill Blvd., Glendale, CA.  
Our meetings are open to everyone who wishes to participate. Volunteers have a great time working together on these types of projects

**Parks, Recreation & Community Services Dept****(818) 548-3795****CALENDAR: <http://www.glendaleca.gov/residents/calendar/-curm-04/-cury-2018>**

- April 7<sup>th</sup> Snake it Up (Check the Volunteer Training pages)
- April 13<sup>th</sup> Mountain Lions in Our Midst...Truths About the Urban Puma (Check the Volunteer Training pages)
- April 14<sup>th</sup> The Great Los Angeles River Clean Up (Check the Volunteer needed pages)
- April 15<sup>th</sup> Earth Day Celebration (Check the Volunteer fun pages)
- April 21<sup>st</sup> The Great Los Angeles River Clean Up (Check the Volunteer needed pages)
- April 21<sup>st</sup> "Happy Birthday, John Muir!" Third Saturday Wilderness Workday (Check the Volunteer Needed pages)
- April 28<sup>th</sup> The Great Los Angeles River Clean Up (Check the Volunteer needed pages)

**Community Hiking Club**<http://communityhikingclub.org/>**Dianne Erskine Hellrigel**email: [zuliebear@aol.com](mailto:zuliebear@aol.com) phone: 661-259-2743

- April 7<sup>th</sup> – **NEW HIKE: Green Valley / Lake Hughes area via the Pacific Crest Trail**

**Distance:** ~ 7.5 miles, one way (with shuttle).**Gain/ Loss:** 1000' Gain/ 1300' Loss**Rating:** Moderate + (lots of gain in a short distance at start of hike).**Not for beginners** - you need to be in good physical condition for this hike.**Time:** ~ 3.5 hours hiking**Description:** If you enjoy expansive uninterrupted views, meeting no one else on a backcountry trail in the Angeles Forest, and enjoy the single track feel of the PCT, this hike is for you.**Meet your leader:** At Towsley Canyon / Rivendale Gate, 24255 The Old Road, Newhall, CA at 7:00AM for a 7:15AM SHARP departure to drive North, caravan style, via Castaic, up picturesque Lake Hughes Road, to the hike meeting spot (see link). <https://www.google.com/maps/dir//34.6596801,-118.4604272/@34.6601875,-118.460213,18z/data=!4m2!4m1!3e0>**If you live in North Santa Clarita, you can drive directly to the meeting spot.** Acton/ Palmdale folks, drive into Lake Hughes, through town and turn South on Lake Hughes Road, drive another 1.5 miles to the meeting spot. We will drop most of the cars at the hike meeting spot (the end point of hike), consolidate into as few cars as possible, and leave at 8:15AM to drive a short 8.3 miles to the hike starting point. We will organize to retrieve the shuttle cars on our way home after the hike, do not worry.**Dogs:** OK, must be on a leash and well behaved around other dogs and people with hiking poles. If you bring a dog, please drive yourself.**Adventure pass:** Not required.**BRING:** Hiking Poles, snacks and at least 3L of water with some electrolytes, camera, hat and sunscreen. Hiking shoes/boots with good tread!**Lunch:** Bring some cash if you want to go to lunch at the Rock Inn in Lake Hughes after the hike.**Leader's note:** There are no restrooms at the trailhead and no facilities between the meeting spot and the trailhead, so plan accordingly.**Leader:** Steve I.

• **April 14<sup>th</sup> - Backbone trail to Sandstone Peak; then completing the Mishe Mokwa trail loop, via the Split Rock and Balanced Rock view.**

\*\*\*\*\* RAIN OR SNOW FALLING AT THE TRAIL HEAD CANCELS ALL HIKES \*\*\*\*\*

**Carpool:** Meet in SCV at 6:30AM, details below.

**Start Hike:** Meet at Trailhead at 8:00AM, details below. Distance: ~ 7 miles, loop

Gain: ~ 1300' (cumulative, most of it in the first mile or so getting to Sandstone Peak)

**Rating:** Moderate + (for distance / gain - this is not one for B eginners, you need to be in good general condition to enjoy this hike).

Description: This is one of the most varied and beautiful loop hikes in the Santa Monica Mountains Recreation area, near the Boney Mountain State Wilderness. We will travel along the Mishe Mokwa and parts of the famous Backbone trails. We see many stunning giant sandstone and volcanic formations, and (depending on visibility) take in some ocean views from the top of Sandstone Peak and Inspiration point. "High"lights of the hike include a visit to Sandstone Peak (3111'), the highest peak in the Santa Monica mountains, also called Mt. Allen, and a view of Boney Peak (2825'). The 360 degree view from Mt Allen is not to be missed. From the highs we head to the lows of a shady creek area where, after snacking by the giant Split Rock, we head back to the trailhead. However, along the way, we get great views of the Balanced rock (a house sized boulder delicately balanced on a small rock beneath), and the spectacular Echo Cliffs, where we should see many rock climbers. We can see the valley stretching out to the South and depending on weather we should probably see some really nice wildflowers.

**Bring:** 2 - 3L water, plus some electrolytes, a lunch / snack, sunscreen, a hat and shoes with good tread, poles recommended as trail is rocky in places.

**To carpool from Santa Clarita Valley (Towsley Canyon Parking lot):**

Meet your hike leader at Towsley Canyon, 24255 The Old Road, Newhall, CA, outside the gate at 6:30 AM to organize carpools. At 6:45 AM SHARP, we depart from Santa Clarita for the trailhead.

Alternatively, you can plan to meet the leader at the Sandstone Peak Trailhead by 8:00AM, details below. As always, we recommend carpooling. Please be respect-ful of your driver's sup-port by contributing something at the end of your carpool to help defray the cost of gas — THX.

**Directions to the Sandstone Peak trailhead from Santa Clarita Valley:**

<https://www.google.com/maps/dir/Sandstone+Peak+Trailhead/34.1115996,-118.92667/@34.1112088,-118.9291162,17z/data=!4m9!4m8!1m5!1m1!1s0x80e83b92592187f1:0xd4455f19e188b390!2m2!1d-118.9265646!2d34.111592!1m0!3e2>

(This route is a tad longer but in fact faster / less stressful). Take 5 Freeway North from Towsley to the Newhall Ranch exit (CA-126, heading West toward Ventura).

Follow CA-126 W, 34.9 miles until Exit 5 from CA-126 W to merge on to CA-118 East, toward Saticoy.

Continue until the road T's. Turn right on to Santa Clara Ave, which becomes Rice Ave and eventually merges into Route 1 (PCH) turning South.

Stay on PCH and pass Point Mugu Naval base on the right, until you are by the ocean. Follow PCH south until you see the Neptune Net Restaurant on the left and Yerba Buena Rd. next to it. Turn left, following Yerba Buena Rd up a very curvy 6.3 miles to the parking lot/bathrooms/picnic table for the Sandstone Peak Trailhead, on the left side of the road.

**NOTE: For anyone that is susceptible to car sickness, we encourage you, to pop a Dramamine/ Bonine or drive yourself - Yerba Buena Road is a twister! There are other ways to get to the trailhead but they are more complex and also very curvy.**

**Meet your Leader:** Meet at the Sandstone Peak Trailhead at 8:00AM to start up the trail at 8:15AM sharp.

**Adventure Pass:** Not Required.

**Leader:** Steve i.

(cont to next page)



• **April 21<sup>st</sup> - Historical Hike: Ye Olde Alpine Tavern and Mt Lowe Railway**

**Carpool:** Meet at 7:45 AM (details below)

**Hike Start:** Meet at 9:00 AM (details below)

**Distance:** ~ 6.5 miles total (out and back, Reverse style).

**Loss / Gain:** ~ 840' loss/ 800'gain, on the way back

**Rated:** Easy + , to Moderate

**Description:** We will hike down from the Mt Lowe Campground Trail head on Mt Wilson / Red Box Road about 3 miles to the Tavern site. We pass through a tunnel and have good views of the San Gabriels. Once everyone has arrived at Ye Alpine Tavern ruins, Club Historian, Alan Pollack, from the Santa Clarita Historical Society, will tell us the brief history of the tavern and the Mt. Lowe electric Railroad. The Railroad brought people to the tavern.

The Mt. Lowe Railway operated from 1893-1936. It is on the National Register of Historic Places, as of 1993. The train crossed 18 bridges between Echo Mountain and the Alpine Tavern. The one in front of the tavern was a large "S" shaped bridge. Both end foundations are still visible. The Tavern was built in 1895, destroyed by fire in 1936, and dynamited in 1959 to allow for the construction of the trail camp, as you will see it today.

**NOTE: THERE ARE RESTROOMS in the tavern area for your convenience. (Bring TP...as it is not always stocked).**

**Carpooling from Santa Clarita Valley:** Meet at Towsley Canyon/ Rivendale parking area in front of the green gate at 7:45AM to arrange carpools. We will leave at 8:00AM SHARP for the trailhead. (Please be respectful of your driver's support by contributing something at the end of your carpool to help defray the cost of gas - THX).

**Directions to Towsley Canyon/ Rivendale Carpool meeting spot in Santa Clarita Valley:** Exit the I-5 freeway in Santa Clarita Valley at Calgrove Blvd. Turn West and follow Calgrove around a curve and through one light. You will now see the gate to Towsley Canyon on your right. Park and look for a group of hikers/ leader.

**Directions to the Hike starting point, link below (41 miles):**

<https://www.google.com/maps/dir/Eaton+Saddle+Trailhead//@34.239352,-118.1634122,12z/data=!3m1!4b1!4m9!4m8!1m5!1m1!1s0x80c2e7edecba22af:0x4ebc9e7d4338d8d8!2m2!1d-118.0933717!2d34.2393719!1m0!3e2?hl=en>

**From Santa Clarita,** take the I-5 South to the 210 East. Exit the 210 at Hwy 2 Angeles Crest Hwy, North, into the mountains/ forest. Take Hwy 2 for ~14 miles, all the way to Red Box Road junction that leads to Mt Wilson. Turn Right, at a parking lot (you will immediately see the Native American Indian Cultural Center, Haramonkngna on your right).

Continue driving on the Mt Wilson/ Red Box Road ~ 2.3 miles. There will be a turn out on the right AND the left side. Park on the right side, if there is space to park. To be sure you are in the correct location, look for a locked forest gate on the right, with the number 2N50 on it. This is the Mt Lowe Campground Trail head.

**Meet at the Trailhead:** Meet here at 9:00AM to start down the trail by 9:15AM latest.

**Bring:** Water (3 liters is recommended), electrolytes if it is a hot day, sunscreen, hat, lunch/ snacks, hiking poles which can be helpful on the climb, and of course your camera. Wear layered clothing in case it gets hot or cold. **Wear good boots with tread.**

**Hike Leader:** Dianne

**Historian:** Alan Pollack.

(cont to next page)

**• April 28<sup>th</sup> - NEW ALL DAY HIKE: Cerro Noroeste (a.k.a Mt. Abel) to Mesa Spring Wilderness Camp (in the Chumash Wilderness, San Emigdio Mesa region)**

**Carpool:** Meet in SCV at 7:00AM, details below.

**Start Hike:** Meet at Trailhead at 9:00AM, details below.

**Distance:** ~ 10 miles, REVERSE STYLE Out and Back

**Gain:** ~ 2600' (all on the way back! )

**Rated:** Strenuous (high altitude, thin air with lots of gain all coming back up)

**Hiking Time:** ~ 5 hours

**Description:** Hike at 8,000 feet in Alpine pine forests on light use single track trails before descending ~2,000 feet passing huge old growth pines to the flat fan shaped San Emigdio area. This is a seldom visited part of the Chumash Wilderness. At 5 miles we arrive at our snack stop - a rarely used trail camp with a running spring. Expect lots of pinon pines, scrub oak, flannel bush, dry creek beds, and forest wildlife.

**Carpooling from Santa Clarita Valley to the trail head (~ 70 miles): (Recommended, due to the distance and to share gas expense).**

Meet at Towsley Canyon/ Rivendale, 24489 The Old Rd, Santa Clarita, CA 91381

GPS: 34.358431, -118.555237

Carpool meets at 7:00AM for a 7:15AM SHARP departure to caravan to the trail head (directions below).

**DIRECTIONS (from Santa Clarita Valley) to Cerro Noroeste trailhead:**

**NOTE:** Allow up to 1 3/4 hours to get to the trailhead from Santa Clarita.

<https://www.google.com/maps/dir/34.8284671,-119.2019895//@34.8260244,-119.2073065,1101m/data=!3m1!1e3!4m2!4m1!3e0?hl=en>

Take the I-5 North ~ 35 miles to Exit 205, the Frazier Park off ramp. Exit, turn left (under highway). Go straight (West) on the Frazier Park Road for about 12 miles along the Cuddy Valley Road, through Frazier Park and passing Lockhart Valley Road (on the left) until you eventually see a brown sign on the right for Camp Bethany Pines. Stay to the right at the next fork and follow the road (Mil Portero Highway 95) to the town of Pine Mountain Club. The highway twists and turns another 8.2 miles down to the town of Pine Mountain Club. Pass through Pine Mountain Club, continuing West. About 2.5 miles out of town, the first major street sign on the left is Cerro Noroeste (see a USFS fire station on the left). Turn LEFT on to Cerro Noroeste, driving through an open chainlink fence/ gate (between two old boarded up USFS homes). Drive only 9 miles up this winding road.

Please be respectful of your driver's support by contributing something at the end of your carpool to help defray the cost of gas.

**NOTE!** The trailhead is not marked! So, at about 9 miles you will see a viewpoint/ turnout at a bend on the right and a brown sign opposite this short turnout.

**NOTE:** DO NOT GO TO THE TOP OF CERRO NOROESTE MOUNTAIN or the CAMP-O-ALTO lot!! You went too far.

**Meet your leader at the trail head:** Meet at the turnout/ trail head sign on Cerro Noroeste Road at ~ 9:00AM to depart down the trail toward Sawmill Mountain at 9:15 AM, SHARP.

**Bring:** 3 L of liquids (2L water/ 1L electrolytes - i.e. Gatorade, etc.). Hiking poles are a definite plus, if you have them; lunch/ snacks, bug spray/bug net if you have one, hat and sunscreen/ lip balm, camera. A windbreaker just in case of a change of weather.

**Adventure Pass:** Not required.

**Leader's NOTE:** There are no bathrooms at the trail head or anywhere on this trail, so plan accordingly. We will make a quick pitstop at Circle-J truck stop, after we exit for Frazier Park, on the way to the trail head.

**Leader:** Steve I

## Concerned Off-Road Bicyclists Association (CORBA)

PHONE: (818) 773-3555

FACE BOOK: <http://www.facebook.com/CORBAMTB>

<http://corbamb.com/>

For schedule goto: <http://corbamb.com/Calendar/index.shtml>

Concerned Off-Road Bicyclists Association was founded in 1987 to serve the mountain bicycling community of Los Angeles and surrounding areas including southern Ventura County. CORBA is a 501(c)(3) non-profit organization committed to gaining and maintaining public trail access for mountain cyclists and the public at-large. CORBA encourages and promotes the safe and environmentally responsible use of unpaved roads and trails for bicycling and to educate the public about all aspects of off-road cycling and trails.

## Haramokngna American Indian Cultural Center

<http://www.haramokngna.org/>

(626) 449-8975.

- **Our Center is open seasonally**, from Spring-Fall. Our normal hours are Saturday and Sunday, 10:00am-4:00pm. We are also available weekdays by appointment. Visitor Center hours may vary due to volunteer staffing. Please contact us by phone or email to confirm availability. [contact@haramokngna.org](mailto:contact@haramokngna.org)
- **Volunteers** As a cultural, environmental and arts organization, Haramokngna American Indian Cultural Center shares the flavor of Native American history, culture, traditions and arts with the Los Angeles community. We are always looking for energetic individuals ready to represent the Cultural Center during special events and regular office hours. If you are interested, please call us at 626-449-8975. or email us at [lorosco@harmokngna.org](mailto:lorosco@harmokngna.org)

## HABITAT WORKS

<http://www.habitatwork.org>

Kim Clark or Tom Persons 818-353-4653

**Cuyama River Tamarisk Safari  
Base Camp with Day Hiking**

**Los Padres National Forest**

**Sat, Apr 7, 2018 8:30 am - 4:30 pm**

**Sun, Apr 8, 2018 9:00 am - 2:00 pm**

**Feast and Campout**

(Saturday only option available)



*Cuyama River Spectabulous near the Dick Smith Wilderness*

Just north of Ojai and the Dick Smith Wilderness, join us for a stewardship adventure in the Cuyama River watershed, treating invasive tamarisk (with low-toxicity herbicide) while day hiking along the riverbed. It's easy hiking, and you'll find track and sign of native wildlife everywhere.

Saturday evening we'll enjoy a delish community feast, toasty campfire, and campout under the starry night sky with great people like you. Sunday morning we'll enjoy a short excursion hike and then work just a few hours before heading out early Sunday afternoon. Bring your basic camping gear and spirit of adventure!

Sign up here: <https://www.habitatwork.org/volunteer-sign-up.html>

We look forward to working with you again soon!

### High Country Riders

Forest wide equestrian volunteer group that packs Equipment, Material and Supplies etc. to your Trail or worksite. Packs Trash & Rubbish out of the Forest.

**Contacts: Jonathan Schultz phone:** 951-830-3400 e-mail: [schultzelectric@earthlink.net](mailto:schultzelectric@earthlink.net)

- Forest Certified Animal Packer
- Master Teacher for "LNT"
- "C" Crosscut Saw Certifier
- Chainsaw "B" faller

**Contacts: Glen Foster phone:** 760-949-3497 or 760-508-0344

- Certified Packer e-mail: [pjwfoster@aol.com](mailto:pjwfoster@aol.com)

### JPL TRAILBUILDERS <https://www.facebook.com/jpltrailbuilders/>

**Kathie Reilly 626-379-8429**

**Jack Russell 562-861-3187**

**(Rain day before or day of outing cancels the outing)**

- **April 14<sup>th</sup> California Trails day (Check the California Trails Day 2018)**

**WHAT'S PLANNED:** . The celebration will include 4-6 hours of trail work on the Red Box/Colby Canyon Trail System. This event is a partnership between the volunteer groups of the Angeles National Forest, the USFS and the NFF. We will break for lunch and a short ceremony about California Trails Day at 1:00 PM in the Red Box parking lot. Activities will end at 3:30 PM.

### Mount Wilson Institute

<http://www.mtwilson.edu/>

P. O. Box 1909, Atlanta, Georgia 30301-1909

(404) 413-5484

#### • Cosmic Café is open

The USFS requires that all parked vehicles display an Adventure Pass. The Cosmic Cafe sells the Adventure Pass during our operating hours. A day pass is \$5.00 and an annual pass is \$30.00 There is a guided walking tour every Saturday and Sunday at 1pm, tickets are sold at the Cosmic Cafe and are \$15.00 for adults and \$12.00 for kids and seniors.

**We Need Your Help** - Mount Wilson Observatory is privately owned and receives no continuing state or federal support.

**You can help ensure the continued operation of this science heritage.**

- **Join** our Friends of Mount Wilson Observatory organization to receive a variety of member benefits and stay informed on the latest scientific and other activities from the mountain.
- **Contribute** to our Second Century Campaign. As Mount Wilson continues into its second century, a capital campaign is being developed to preserve this great observatory for future generations.

## Mount Wilson Bicycling Association

## VOLUNTEER GROUP NEWS

<http://mwba.org/>

Contact: Matt Lay [matt@mwba.org](mailto:matt@mwba.org)

### • April 15<sup>th</sup> Outing

MWBA gathers every 3rd weekend for trail work on multi-user trails in the San Gabriel Mountains. Usually on a Sunday, volunteers spend the morning correcting drainage, rock armoring switchbacks, patching ruts, moving land slides, and fixing trail surfaces. MWBA focuses on keeping our trails “sustainable” and safe for all user groups, not just mountain bikers. We also take the opportunity to speak with riders we see on the trail about bike bells, trail courtesy, and volunteer work.

MWBA volunteers work regularly on Sunset Ridge Trail, Sam Merrill, and El Prieto. We have also done trail work on Strawberry Peak, Rattlesnake, and other spots.

After about 3-4 hours of good work, we wrap it up and enjoy lunch together. Trail work is a great way to give back to your favorite trail and to meet other trail users. It is perfect way to experience trails from a different perspective. A trail work day is always rewarding time and its great fun to ride a trail that you have helped maintain.

MWBA also has a team of USFS trained & certified Chainsaw Sawyers. The Station Fire burned a massive amount of our forest and every time the wind picks up another tree falls. The Sawyer team is “on call” for fallen tree clearing duties and commonly works on weekdays when trail traffic is lower. MWBA is very grateful to our local Little Tujunga Hot Shots crew who trained our sawyers and continue to offer valuable advice and support.

Come out and join us on a weekend trail work day! No trail work experience is necessary. All you need is yourself, a long sleeved shirt, pants, sturdy boots, and a great attitude. We guarantee you will have a fun day working alongside other mountain bikers!

## Mount Wilson Race

<http://www.mountwilsontrailrace.com/HOME.html>

Pete Siberell Chair, Mt. Wilson Trail Race

### Mt. Wilson Trail Race Trail Work Schedule

- Apr 29<sup>th</sup> Below the Steps
- May 13<sup>th</sup> As Needed
- May 20<sup>th</sup> As Needed
- May 26<sup>th</sup> Mt. Wilson Trail Race!

We will meet at 7:00A at Lizzie’s Trail Inn at Mira Monte and Mt. Wilson Trail. Please bring gloves, sun protection and water.

RSVP to Race Chair Peter Siberell ([psiberell@santaanita.com](mailto:psiberell@santaanita.com)) so we have enough tools for everyone.

## Pacific Crest Trail Association

<http://www.pcta.org>

FACE BOOK: <http://www.facebook.com/#!/PCTAFan>

Liz Bergeron [Lbergeron@pcta.org](mailto:Lbergeron@pcta.org)

Sacramento, CA Phone: (916) 285-1846 x 26

- Check out the Trials Skills Colleges pages ,  
Learn new trailbuilding skills

**Restoration Legacy Crew**Brenda Beck at: e-mail [brenda.beck@sbcglobal.net](mailto:brenda.beck@sbcglobal.net)

phone: (626) 574-8204

We are Los Angeles Gateway District volunteer trail builders. We work Tuesdays, Fridays and some Sundays. Current Project: Dawn Mine Trail

**San Gabriel Mountain Trail Builders**<http://www.sgmtrailbuilders.org>

And a good time was had by all! If you would like to join us, we perform scheduled work the 1<sup>st</sup>, 3<sup>rd</sup> and 5<sup>th</sup> Saturday of every month, meeting at the Forest Service Gateway Information Center across from Mile Marker 17 on Highway 39 above Azusa at the base of the mountain, leaving promptly at 8:00 a.m.! Email [bwootenwhite@hotmail.com](mailto:bwootenwhite@hotmail.com) to get on the mailing list since unscheduled volunteer work is often done during the week as well.

**If you would like to volunteer your time,****Call: Ben White: 626-303-1078****Or E-Mail: [benw@sgmtrailbuilders.org](mailto:benw@sgmtrailbuilders.org)****If you would like to work with the Mount Baldy Group****Contact The Baldy Group: [bttbs.ysh@live.com](mailto:bttbs.ysh@live.com)****SCENIC MT. LOWE RAILWAY**<http://www.mtlowe.net/>**FACE BOOK: <https://www.facebook.com/mountlowevolunteers/?fref=ts>****Brian Marcroft 562-868-8919 E-mail: [EMWORKS@VERIZON.NET](mailto:EMWORKS@VERIZON.NET)**

**Our mission is to preserve the remnants (structures, trails, artifacts) of the Mount Lowe Railway in the Angeles National Forest. We work under the authority of the Angeles National Forest along with a cadre of many other volunteers who help with various projects to protect the Forest.**

**Sierra Club****1750 North Altadena Drive, Pasadena, CA 91107**

213-387-4287

For more calendar details go to <https://www.sierraclub.org/angeles/pasadena>**• April 4<sup>th</sup> 7:00 PM Pasadena Monthly Program**

**Pasadena Group Monthly Program:** UCLA professor Lee Scott Theisen will discuss the origins of using the cocoa bean to create stimulating drinks in various ancient cultures, as well as the historic and current social, economic and environmental impacts of growing, harvesting, processing and transporting cocoa and its products. He will bring samples for tasting various types of chocolate from throughout the world. The meeting is free and open to the public, but attendees will be asked to contribute a dollar or two to cover the cost of the samples. For more information, contact David Czamanske at (626) 458-8646. Socializing and refreshments at 7 pm, program starts at 7:30 pm, at Eaton Canyon Nature Center, 1750 N. Altadena Dr in NE Pasadena. Information on the Group's hikes, outings, and conservation activities. . Newcomers always welcome! For more information contact Group Membership

Chair, Bill Joyce [rollingtherock@verizon.net](mailto:rollingtherock@verizon.net).

- April 11<sup>th</sup>/25<sup>th</sup>/ Evenings in the Arroyo
- April 5<sup>th</sup>/12<sup>th</sup>/19<sup>th</sup>/26<sup>th</sup>/ Henninger Flat Conditioning Hike
- April 28<sup>th</sup> Icehouse Canyon to icehouse saddle
- April 21<sup>st</sup> Muir Pk (4688') Rendezvous Hike via Echo Mtn
- April 21<sup>st</sup> Muir Pk (4688') Rendezvous Hike from Eaton Saddle
- April 14<sup>th</sup>/ Spring in the Arroyo

## SOUTHERN CALIFORNIA MOUNTAINS FOUNDATION

<http://mountainsfoundation.org/>

Sarah Miggins [smiggins@fs.fed.us](mailto:smiggins@fs.fed.us) 909-382-2796  
602 South Tippecanoe, San Bernardino, California 92408

For more calendar details go to

<http://mountainsfoundation.org/calendar>

- Nature Crafts April 7<sup>th</sup>/14<sup>th</sup>/21<sup>st</sup>/
- Nature Walks April 7<sup>th</sup>/8<sup>th</sup>/14<sup>th</sup>/15<sup>th</sup>/21<sup>st</sup>/22<sup>nd</sup>/28<sup>th</sup>/29<sup>th</sup>/
- Story Time April 14<sup>th</sup>/21<sup>st</sup>/

## Tree People

<https://www.treepeople.org/>

FACE BOOK: <https://www.facebook.com/TreePeople1/?fref=ts>

12601 Mulholland Drive

Beverly Hills, CA 90210 Telephone (818) 753-4600

For more calendar details go to: <http://www.treepeople.org/calendar>

- Angeles Forest Restoration April 1<sup>st</sup>/7<sup>th</sup>/8<sup>th</sup>/14<sup>th</sup>/15<sup>th</sup>
- Campus Planting April 7<sup>th</sup>/28<sup>th</sup>
- Drought Solutions Tour and Native Plant Walk April 7<sup>th</sup>
- Family Tours and Native Plant Exploration 8<sup>th</sup>
- Group Dog Hike April 14<sup>th</sup>
- Moonlight Hike April 20<sup>th</sup>
- Park Work Day at Debs Park April 4<sup>th</sup>/11<sup>th</sup>/14<sup>th</sup>/18<sup>th</sup>/21<sup>st</sup>/25<sup>th</sup>/28<sup>th</sup>
- Park Work Day at TreePeople April 5<sup>th</sup>/14<sup>th</sup>/19<sup>th</sup>/26<sup>th</sup>
- Park Planting April 24<sup>th</sup>/28<sup>th</sup>
- Santa Monica Mountains Restoration April 7<sup>th</sup>/14<sup>th</sup>/21<sup>st</sup>/28<sup>th</sup>
- Shade Tree Adoption April 14<sup>th</sup>
- Street Planting April 4<sup>th</sup>/7<sup>th</sup>/14<sup>th</sup>/21<sup>st</sup>/28<sup>th</sup>
- Volunteer Supervisor Training April 21<sup>st</sup>

## Volunteers of the Angeles National Forest

Wrightwood, CA <http://www.grassyhollow.net/>

Visitor Center Phone #: (626) 821-6737

Loren Lake [lorenll@verizon.net](mailto:lorenll@verizon.net)

The Grassy Hollow Visitor Center and Grounds are open for day-use only

Hours: Saturdays, Sundays and Holidays 10:00 am to 4:00 pm

Weekdays- for school groups, youth organizations, etc. By Appointment

## William S Hart UHSD of Santa Clarita ANF Crew 135

Kevin Sarkissian

Lead Trailboss

W S Hart Union High School District

Angeles National Forest - ANF Crew 135

21380 Centre Pointe Parkway

Santa Clarita, CA 91350

661.877.7024

661.284.3270 X 1438

<https://www.facebook.com/roptrails/>

Los Angeles River Ranger District  
12371 North Little Tujunga Canyon Road  
San Fernando, CA 91342

TUNDRA by Chad Carpenter, Los Angeles Times July 15, 2013 email: [tundra@tundracomics.com](mailto:tundra@tundracomics.com)



**Volunteer Today**

Send this in Right Away to

Dennis Merkel —12371 N. Little Tujunga Canyon Rd  
San Fernando, CA 91342

Name \_\_\_\_\_

Address \_\_\_\_\_

\_\_\_\_\_

\_\_\_\_\_

Phone # (hm) \_\_\_\_\_

e-mail \_\_\_\_\_

**Interests**

Indicate what you would like to do. Circle area or enter your interests.

Campground Host/ Visitor Information/ Smokey Bear - Fire Prevention/

Recreation Aid / Forest Patrol /Resource Management / Computers/

Research-Librarian / Office Clerical / Tour guide/ Fire Lookout/

Conservation Education / habitat restoration and tree planting

Other: \_\_\_\_\_

\_\_\_\_\_