

VOLUNTEER TODAY

Dedicate Yourself to Caring for the Land and Serving the People

<http://www.fs.fed.us/r5/angeles/volunteering/>

Los Angeles River Ranger District Volunteer Newsletter February 2015

Attention Volunteers

We held a First Aid/CPR/AED class last weekend and afterwards I was asked if the Forest Service could give out 'field kits' to all volunteers. Unfortunately I don't have the funding to be able to purchase kits for each volunteer, but attached is an example of recommended items to put into a homemade first aid kit. Simply put everything into a small, light, waterproof container and take along on trips into the backcountry. These recommendations are the minimum - you could always take more items, like an elastic bandage for example.

Quantity	Item
■.....2-4.....	Non-Latex Gloves
■.....1.....	Pocket Mask
■.....6.....	4x4 Gauze Pads
■.....2.....	2" Roller Gauze
■.....2.....	1" Medical Tape (Cloth Tape recommended)
■.....12.....	Various sizes of Adhesive Bandages
■.....4.....	Cravats (Triangle Bandages)
■.....1.....	SAM(Structural Aluminum Malleable) Splint or Equivalent
■.....1.....	Trauma Shears
■.....1.....	Penlight/Headlamp
■.....1.....	Permanent Marker (Sharpie)
■.....1.....	Thermometer
■.....1.....	Multi-Tool with Knife

Dennis Merkel, FPO / CPRP

Electronic copy of Newsletter at:
<http://www.mtlowe.co/VolunteerNews.htm>

**IT'S HARD TO BEAT A PERSON WHO
NEVER GIVES UP**

In The Los Angeles Times	pg 2
Los Angeles Times Flash Forward.....	pg 2
LARRD Volunteer Meeting Minutes.....	pg 3-4
Mission Success.....	pg 4
Training opportunities.....	pg 5-6
Chainsaw Certifications.....	pg 7
Volunteers Needed.....	pg 8-9
Bear Update.....	pg 10
Volunteers At Work/Training.....	pg 11-14
What are your Tracks?.....	pg 19
Volunteer group news	pg 15-23

IN THE LOS ANGELES TIMES

February 14 , 1890

NOTE AND COMMENT

Every tourist staying at the Painter, Webster, Raymond, or other of our fine hotels, should not go away without visiting Switzer's Camp. This retreat lies in the heart of the Sierra Madre range, about thirteen miles in , and will give the stranger an idea of our beautiful mountain scenery that will be a revelation. Commodore Perry Switzer is in command--an old Virginian with the true ring, and right royal company.

IN THE LOS ANGELES TIMES FLASH FORWARD!

All good things must come to an end.

The painter hotel, a popular tourist resort, was located on Washington Street Between Fair Oaks and Raymond, John H. Painter, proprietor of the Hotel, and B.F. Ball at one time owned virtually all of Pasadena North of Villa Street, Buying it at \$15 per acre in the early 1880's.

The hotel which was built in 1887 prospered for many years, But in 1905 the Painters sold it to General M.C.Wentworth and others who changed the name to La Pintoresca Hotel, meaning the Picturesque. A fire on December 31,1912 destroyed the structure and it was not rebuilt.

IN 1887, Edward C. Webster financed a passenger station linked to the Intercontinental Santa Fe line in downtown Pasadena. Next to it, he built the small Hotel Webster, on the corner of Raymond and Kansas(now Green Street). His ingenious idea, using the railway to funnel Midwest and Eastern tourists directly to his hotel, was not lost on Colonel George Gil Green. Colonel Green helped finance the project, an when Webster went bust, he became the owner of the hotel. In 1916, old Colonel Green leased the property to Daniel M. Linnard. The property was split in two -- the original building was to be turned into a "medium priced hotel," while Castle Green would cater to upper class guests. By 1924 the hotel had been sold to a group of assorted capitalists, including Linnard. Castle Green became an "own-your-own" apartment building, while part of the original building continued life as a more pedestrian hotel. Much of the original building was torn down in 1935.

The Raymond Hotel located in South Pasadena was the first major resort hotel of the San Gabriel Valley which, for the most part, served as a winter residence for wealthy easterners. It was built by Mr. Walter Raymond of Raymond & Whitcomb Travel Agency of Boston, Mass. The hotel was built atop Bacon Hill which lies between Pasadena and South Pasadena and was renamed Raymond Hill with the opening of the hotel in 1886. The original hotel, a grand and unequivocal Victorian edifice was burned to the ground in 1895. A second building, of a later and more fireproof style, was erected in 1901 and equally replaced the older in grandeur. The hotel was foreclosed following the Great Depression and was razed for commercial development.

In the late nineteenth century, many who responded to the boosters' appeals settled near the base of the San Gabriel Mountains in Pasadena. In 1884, one such man, a health seeker named Commodore Perry Switzer, opened a fifteen mile trail up the Arroyo Seco to a pristine mountain playground of crystal pools and deep gorges. Switzer built a camp near a seventy-foot waterfall. The settlement became famous as "Switzer-land", and, as Charles Frederick Holder wrote in All about Pasadena and Its Vicinity (1889), was "visited by nearly every person who tarries in Southern California."

Switzer's camp could be reached only by a twice-weekly burro train or by foot; exhausted hikers were instructed to ring a cowbell a half-mile below the resort to signal how many hungry visitors the camp should expect.

In 1911, ownership of the mountain resort changed hands, and the new proprietor, Lloyd Austin, added luxury amenities such as tennis courts. Austin also built an impressive chapel, perched on a rocky outcropping, views of Switzer falls below. In its peak years, Switzer-land counted movie stars such as Shirley Temple and Clark Gable among its guests. Switzer's Camp struggled through the 1950s and was forced to close in 1959, despite its location alongside the highway.

Los Angeles River Ranger District (LARRD) Volunteer Meeting Minutes

January 21, 2015 Arcadia By Kathie Reilly

Our newsletter is on the Mt Lowe website -- www.mtlowe.net

Organization Reports:

- California Trail Users Coalition (CTUC): setting up trail ambassadors at North Fork
- Angeles Mountain Bikers and Trail Keepers, Mark: Lower Merrill Trail, people still cutting open short cuts and Mark still blocking them
- Angeles Mountain Bike Patrol (CORBA), Robin & Mike, Steve: attended CPR and First Aid, chain Saw B level, then helped with chain saw A level. Still working Strawberry Peak Trail. LA Conservation Corps working Gabriellino down from Switzers. Oakwilde is filled with silt.
- JPL Trailbuilders, Kathie: working Mt Lowe East since not sure of state of Mt Lowe fire road. Thank Danny Treadway's group for removing graffiti past Mueller Tunnel.
- Angeles National Forest Fire Lookout Association: Vetter absent
- Arroyo Seco Canyon, Tom and Patty: provided CPR and First Aid class
- Mt. Disappointment 50k/50 mile: Gary: absent
- Terry Tanner: had foot surgery, will be out a while
- Scenic Mt Lowe Committee, Brian: restoring old Sam Merrill sign, cleared Echo Mt Trail.
- Friends of Echo Mountain, Mike: cleared 6 bags trash. Would like an SST up there since most of the trash is toilet paper. Teaches a class 'Hiking for Health'.
- Boy Scouts of America, David: surveyed high country after rain and wind storms. Eagle Project at Valley Forge. New deadfalls on Gabriellino between Red Box and Valley Forge, and between DeVore and West Fork – good practice for new chain saw graduates. Would like a cross-cut class.
- William Hart Trails, Kevin: absent
- Angeles Crest 100 Mile Endurance Run, Hal: Hal finished his 33rd Avalon 50-mile Benefit Run – congratulations! Required trail work by runners starts in August, will put out a work schedule in April. All leaders should have First Aid kits. Need communication of sawyers and tree inventory. Thanked Greg Stenmo for the excellent chain saw classes, with emphasis on safety.
- Bear Canyon, Allen Coles: has experience with fire-ravaged trails, working on putting trail back on original tread. Bearcanyontrailcrew@gmail.com
- Tree People: will start planting schedule in March at Chilao. Will be doing more watering this time. Planting supervisor training in February.
- Chantry Flats, Dave: busy for this time of year. Tina is back working Nature Center. Need law enforcement for illegal parking now like they do in the summer. Pack station is having a fund-raiser Sunday to help them buy Sturtevant Camp.
- Sierra Club, Don: Finished Gabriellino at Valley Forge and will be working Kenyon DeVore
- MIS Hermanos Pequenitos (My Little Brothers), Andreas: planting trees in campground on Highway 39, reforesting with Tree People, the goal is to plant 9,000 trees, natives of different varieties. Removed graffiti at Buckhorn.
- Mt Wilson Bicycling Association (MWBA), Mitch: Sunset and El Prieto Trails
- Legacy Restoration Crew, Brenda: Nature's Canteen Trail now in good shape, working George's Gap, Grizzly Flats has 10 new down trees. Dave: working Trail Canyon Trail. San Fernando Trail group is interested in working Condor Peak Trail.
- Crescenta Valley Trail Crew, Karen: absent. Hal commented that Glendale Park and Rec has good patrols in Verdugos and Deukmejian.
- ANF Volunteer Coordinator: absent
- ADV Moto trail crew, Joel: Promote back country riding, would like more open gates for all riders. Hope to adopt Santa Clarita Divide. Rincon will open soon.
- PCTA, John: North Fork and Pacifico

Los Angeles River Ranger District (LARRD) Volunteer Meeting Minutes

USFS Dennis:

- Monument: There are only 8 National Monuments in the country managed by the Forest Service, we should consider this a gold star. Money is starting to come in. Over 60 special interest groups want to take part in the planning. Starting with a group of 12, they have met twice to expand to 30-50. It takes commitment since these are 6-hour meetings. Invitations are going out in the next 2 weeks. It is a community collaborative sponsored by the National Forest Foundation to provide input for the Management Plan which represents the entire Forest, not just the Monument.
- Mike McIntyre's retirement party is Feb 27
- Passed around nomination forms for Volunteer of the year.

Next LARRD Volunteer Meeting will be held Wednesday, March 18 at 7:00pm at the Forest Supervisor's Office in Arcadia.

MISSION SUCCESS!!!

Thanks to the work of Danny Treadway and the Blight Busters, the graffiti invasion at Eaton Saddle has been stopped for now

BEFORE



NOW



BEFORE



NOW



TRAINING OPPORTUNITIES



THE CITY OF GLENDALE
Community Services & Parks Department

Trail Building and Maintenance (Classroom and Field Instruction)

◆ WHEN:

Sat., Feb. 14, 2015
8:00 a.m. - noon

◆ WHERE:

**Glendale Sports
Complex**
2200 Fern Lane
Glendale, CA 91218

**Fifteen spaces are
available for this
program (you must be at
least 16 years old)**

**Call us at (818) 548-3795
to reserve your spot**

**Wear sturdy shoes, long
pants and long sleeved
shirt, bring water and a hat**

Trail construction and maintenance are not only skills, but an art form. Attend this class to learn the techniques of proper trail design, development and sustainability.

Our instructor for this class is **Karen Buehler**. Karen received her training from the Pacific Crest Trails Association. She has led trail projects at Deukmejian Wilderness Park and in the Angeles Forest.



Topics to be covered include: Trail Terminology; Tool Use and Safety; Climate and Clothing; Tread Conditions; Hillside Hydrology; and Maintenance Techniques.

The day will conclude with **maintenance projects** on the Sports Complex Trails (the Mountain Do Trail and the Catalina Verdugo Trail).



Sponsored By:

**GLENDALE PARKS &
OPEN SPACE
FOUNDATION**

Հայերեն տեղեկությունների համար գանգահարել
հետևյալ հեռախոսահամարով (818) 548-2000

Para información en español, llame a (818) 548-2000



REASONABLE ACCOMMODATIONS WILL BE MADE UPON REQUEST.
PLEASE NOTIFY US WITHIN 72 HRS PRIOR TO EVENT DATE.

TRAINING OPPORTUNITIES

HAT Training VHC WLACC 2014

**Become a USFS approved Trail Boss
Supervise Trail Maintenance
for the youth in your group.
(Great Eagle Projects!)**



A GREAT TRAINING PROGRAM NOT ONLY FOR BOY SCOUTS BUT FOR ALL VOLUNTEERS!

**Let us train you and other adults in your group
so that you are qualified to do Trail Surveys and set up projects
and complete them on your own.**

Purpose:

To provide properly trained personnel with the ability to supervise either “Trail Blazing” or “Forest Conservation” program projects at the unit level.
All Trail Bosses will be trained by USFS Personnel or their approved Trail Boss Trainer.

Requirements:

Must be 18 or older.

Complete 4 days of 6 hours each in training exercises with the Trail Boss Program.

Conduct an approved Weekend project. Minimum 10 hours with your unit. (or another unit) under your supervision, and have it checked out by the Trail Boss trainer.

(Training days do not have to be consecutive days, weeks, or even years).

Training objectives are Tool, Personal Safety, Condition Survey, Brush Clearing, Tread Work, French Drains, Trail Dips, Soil Sacks, Water Bars, Switchback Construction, Tread Support, Etc.

Bring: Gloves, Hat, Water and Lunch, 10 essentials, Day pack, Work clothes.

Training days 2015 : Mar 07/08 Apr 25/26 May 02/03

Call to confirm training day, Time and Meeting Place. (Course cancels if no calls)

We meet at McDonalds at Bouquet Cyn. Rd. & Valencia Blvd, in Valencia at 8:00 AM.

Contact:

Patrick Aubuchon, Chief Trail Boss.

818-781-7465 - bigaub@sbcglobal.net

CHAINSAW CERTIFICATIONS

The following volunteers have completed LARRD B-Level Sawyer and LARRD A-Level Sawyer Certification Training at Little Tujunga Training Center



B-Level Certifications

David Ledford
Lambert Timmermans
Bob Ballard
Steve Messer
Gary Hilliard
Fred Rice
Bryan Rice
Mike McGuire
Mike Ferreira

A-Level Certifications

Mark Applegate
Mitch Marich
Jean Ho
Hal Winton
Erik Hillard
Dave Baumgartner
Joel Paez
Isaac West
Richard Provencio
Dale Gillibrand
Nyen Chu
Matt Zern
Adam Virden

VOLUNTEERS NEEDED!



THE CITY OF GLENDALE
Community Services & Parks Department

Riverwalk Workday **(on the Glendale Narrows Riverwalk)**

◆ WHEN:
Sat. Feb. 7, 2015
8:00 a.m. - Noon

◆ WHERE:
Glendale Narrows
Riverwalk
300 Paula Ave.
Glendale, CA 91201
(corner of Paula Ave
& Garden St)

Questions? Call us
at (818) 548-3795

Everyone must sign
a waiver prior to
working. Minors
must provide a
waiver signed by a
parent or guardian.



Join our monthly workday as we weed and maintain the landscaped areas along the Los Angeles River in the City of Glendale.

Participants are asked to wear sturdy shoes, protective clothing, long pants, hat and sun protection. We will provide the tools, gloves, drinks and snacks, but if possible bring your own work gloves and hand clippers.



Families, individuals, groups, clubs and students needing Community Service hours are encouraged to attend.

Հայերեն տեղեկությունների համար գանգահարել
հետևյալ հեռախոսահամարով (818)548-2000

Para información en español, llame a (818) 548-2000

Sponsored By:



REASONABLE ACCOMMODATIONS WILL BE MADE UPON REQUEST.
PLEASE NOTIFY US WITHIN 72 HRS PRIOR TO EVENT DATE.

VOLUNTEERS NEEDED!

The Mount Wilson Trail Race Committee needs volunteers to help groom the trail for training and running for the race, scheduled for Saturday, May 23, 2015.

Volunteers should bring their own water, gloves and sun protection. Trail tools will be provided. We will meet at Lizzie's Trail Inn at the Mt. Wilson trailhead (Mt. Wilson Trail Road and Carter in Sierra Madre) at 8:00 A.M. You must email Race Chair Pete Siberell (psiberell@santaanita.com) if you are coming so we will have adequate tools ready.

The Mount Wilson Trail Race Schedule:

- Feb 22nd
- March 29th
- Apr 26th
- May 10th

Call Pete Siberell at 626-574-6373 if you have any questions.

Gabrielino Trail Help

The Gabrielino Trail from Red Box to West Fork has been worked by volunteer crews in the past and is on the list for future trail work. Bear in mind we have over 375 miles of trails in the Los Angeles River Ranger District alone and the majority were damaged or destroyed by the Station Fire so it will be a long time before all trails are restored to a degree considered adequate. Some of the damage is so extensive that contractors have been hired to help restore the trails and in fact a project will begin on the Strawberry Peak/Colby Canyon Trail the first of next month to restore the washed-out areas. Forest Service partners such as the National Forest Foundation and Friends of the Forest are actively participating in restoration efforts. The Gabrielino Trail has had several Boy Scout Troops as well as other volunteer groups provide maintenance. We are always looking for more volunteers to assist throughout the District. If you know of anyone interested, please contact me.

Thanks,

Dennis Merkel, CPRP, FPO

Phone: 818 899-1900 Ext 229

Fax: 818 896-6727 Email: dcmerkel@fs.fed.us

BEAR CANYON TRAIL CREW NEEDS VOLUNTEERS

Now that you've read all about Commodore Perry Switzer and his wonderful "Switzer-Land" come and see the area for yourself. The crystal pools and deep gorges are still there and they are gorgeous! Most people never make it past the first waterfall to see the rest of this beautiful playground that was once a primo destination for tourists from all around. The remnants of the chapel are still visible and if you Google "Switzer's Chapel" you'll find a page devoted to the story with lots of pictures from this site's glory days.

Due to December's rains the pools have filled with silt from the mountains but it doesn't take long for them to clear out. Come on our next venture and take some before pics so you can truly understand the power of small trickles of water over long periods of time.

This trail gets lots of use and there is always something to be done on the trail. We need all the hands we can get!

Bear Canyon Trail Maintenance 2015 Schedule

- Feb 28th
- Mar 28th
- Apr 25th
- May 30th

e-mail/call Andy Hoyer that your are helping!

Phone: 213-675-0420

E-mail: bearcanyontrailcrew@gmail.com

BEAR UPDATE

Dear All,

I've been asked again for an update on the little bear cub we rescued in November. Thanks to Sara P. Scott at the Fund for Animals Wildlife Center in Ramona, California, for the following BEARy good news and photos.

Little Alzada bear is not so little anymore!

On 13 December 2014 she was healthy enough to be moved to an outdoor enclosure next to the two larger and slightly older male bear cubs (both black instead of cinnamon brown). Staff decided that Alzada was still too small to be placed outside with the two boy bears who outweighed her and were more rambunctious in personality. She is able to see and hear the two bear "boys" next door in another enclosure, though, which provides her with a little bear company.

Alzada looks anxious in the photo because the picture was taken as she was released in a new, larger, outdoor enclosure for the first time. She continues to be a shy bear according to her caregivers. The speckles on her fur in the attached photo are bits of straw from exploration of her new surroundings. Alzada is doing well, but has a lot of catching up to do before she reaches a more normal weight for her estimated age. She remains apprehensive of people, which it is good for a bear to be. In spite of how "cuddly" she looks, she remains a wild bear.



Alzada will probably not be weighed again until she is moved to an even larger enclosure where she can prepare for release. Before then, she needs to gain adult weight and become capable of living on her own in the wild. Bears grow quickly, so that *might* be later this spring. Since the attached December photo, she has probably gained another 10-20 lbs and may now weigh close to 60 lbs. (!) Alzada is learning to forage for acorns and fruit, though her caregivers say she can be a "finicky eater" (whatever that means).

Orphan Bear Update on Facebook:

<https://www.facebook.com/thefundforanimalswildlifecenter/posts/10153021157680097>

Please consider a small donation in support of Alzada bear. Every bit helps. Raising an orphan bear to be a healthy, releasable wild bear is a costly endeavor. Contact the Fund for Animals Wildlife Center below to contribute. Mention you were inspired to give on behalf of Alzada bear who was rescued in Altadena, CA.

Fund for Animals Wildlife Center

(760) 789-2324

18740 Highland Valley Road

Ramona, CA 92065

<https://www.facebook.com/thefundforanimalswildlifecenter><http://www.fundforanimals.org/>

<http://www.fundforanimals.org/>

Thanks for caring about this orphaned bear. We'll keep you posted on her progress and future plans for her release here in the San Gabriel Mountains. She will always be recognizable with her round "1946" ear tag.

VOLUNTEERS AT WORK/TRAINING



Volunteer paying attention to First Aid Instructor Tom by Patricia Dwyer

Neide and Mr. Terry learning CPR in First Aid Class by Neide Torres



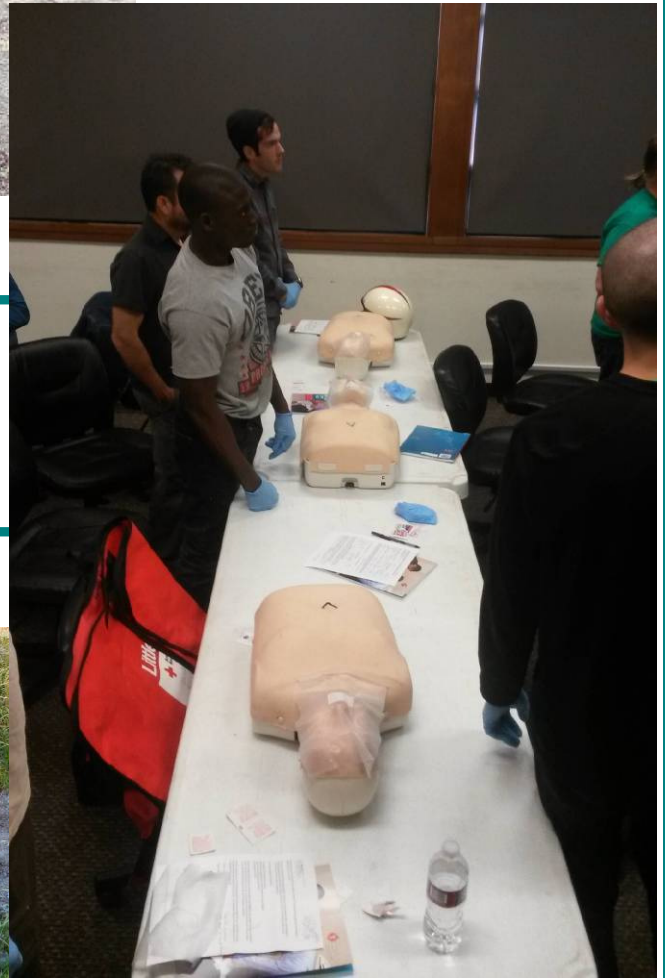
Trail Canyon Road Trail reroute, note the Marston Mat hanging in the air. by Brenda Beck

VOLUNTEERS AT WORK/TRAINING



**Scenic Mt. Lowe Railway sponsoring the 119th celebration of the Alpine Tavern opening.
by Brian Marcroft**

**Volunteers at First Aid class getting ready to work with Resuci Anne Manikins
by Patricia Dwyer**



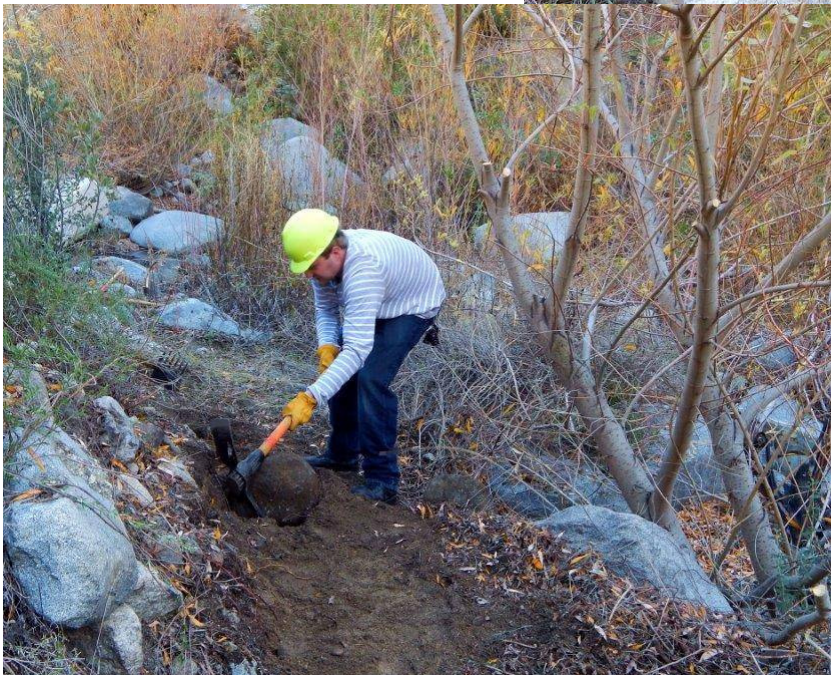
**Dave Baumgartner working on Trail Canyon Road
by Brenda Beck**

VOLUNTEERS AT WORK/TRAINING



**Scenic Mt. Lowe Railway
restoring Sam Merrill
Trail monument.**

**Dave Baumgartner moving a
rock off the Trail Canyon
Road
by Brenda Beck**



**Erik Roach moving a rock off
the Trail Canyon Road
by Brenda Beck**

VOLUNTEERS AT WORK/TRAINING



**Peter installing a French on the Trail Canyon Road
by Brenda Beck**

**Volunteer First Aid Instructor Tom Dwyer
by Patricia Dwyer**



**Learning how to row a injured person over.
by Patricia Dwyer**

AC100 <http://www.ac100.com>

- The 28th Annual AC100 Race for 2015 is full!
- The race for 2016 on-line registration will begin on August 3, 2015 @ 12:00 Noon, following the conclusion of the 2015 race..

Angeles Mountain Bikers and Trail Keepers

Mark Gage mrgy33@hotmail.com

- Trail Maintenance "Gardening by the Mile not the Yard."....Hikers and Bikers working together on trails. We work on the trails almost every Saturday. Our focus trails are Lower Sam Merrill, Castle Canyon and Echo Mt. Trails.

Angeles Mountain Bike Patrol m.rmccuire@hotmail.com

Our mission is to provide educational and a responsible image to all trail users. To encourage rider's to obey forest regulations and working to preserve and protect trails. A.M.B.P is here to serve and inform the public

**ANGELES NATIONAL FOREST
FIRE LOOKOUT ASSOCIATION**

<http://www.anffla.org>

Pam Morey pammorey@fs.fed.us

Forest Care Program Coordinator

909-744-9510 ext. 125

- Help rebuild Vetter Mtn Fire Lookout with a purchase of a reusable tote bag for \$5.
- **BECOME A FIRE LOOKOUT!** It's probably easier that you realize to become an active Fire Lookout with the ANFFLA. It just takes a few classes training (which are quite fun!) and the desire to spend some time in the Angeles National Forest. For more information about becoming a fire lookout pammorey@fs.fed.us or 909-744-9510 ext. 125 **A training schedule will be available early April 2015!**
- **Help support ANFFLA every time you shop!**
Register your Ralphs Club Card and your Food4Less card and ANFFLA will receive a donation every time you shop. It's an easy to help support our efforts and costs you nothing!



Antelope Valley Conservancy www.avconservancy.org

avconservancy@yahoo.com Face book: Antelope Valley Conservancy

PHONE (661) 943-9000

- Looking for a sustainable gift? Consider giving a Membership in Antelope Valley Conservancy. Only \$25. A gift that keeps on giving.
- If you use Google or any other search engine, please try GoodSearch.com to help us build the Sustaining Endowment. Just type "av conservancy" as your charity and Yahoo donates a penny for each search- at no cost to you! Do it now, so you don't forget. Thank you!

Arroyos and Foothills Conservancy <http://www.arroyosfoothills.org/>

John Howell, (626) 796-0782 johnrhowell@earthlink.net

Face book: Arroyos & Foothills Conservancy

If you have any questions, please email Jennifer Taylor at jennifertaylor@arroyosfoothills.org or call AFC at 626.796.0782 We'll see you there!

BEAR CANYON TRAIL CREW

bearcanyontrailcrew@gmail.com

Andy Hoyer 213-675-0420

- Feb 28th Outing (SEE PAGE 9)

Blight Busters Trail Crew

Danny Treadway dayhiker86@yahoo.com

Boy Scouts of America

Los Angeles Area Council

<http://www.laac-hat.org/>

Big Santa Anita Canyon

<http://www.bigsantaanitacanyon.com/>

Adams' Pack Station, in partnership with Friends of the San Gabriels, is pleased to announce that it has entered into an agreement with the United Methodist Church to purchase Sturtevant Camp. We now have a fundraiser and hope that you will participate! We must raise \$75,000 by March 2, 2015

For Details goto: <http://adamspackstation.com/fundraiser>

or call us: Friday, Saturday & Sunday 8:00 am - 5:00 pm (626) 447-7356

- Open Year round, 6 am to 8 pm every day.
- The road is gated and the gate is locked at night. Be sure to return to your car before 7:30 pm or you may not get out! During and after heavy rains, fires, or after significant earthquakes, and during fire alerts the road may be closed.
- The Sierra Madre Police Dept. is in charge of locking/unlocking the gate. If you are concerned that the road might be closed you can call them for info: 626 355-1414.
- Adams Pack Station Contact: Friday, Saturday & Sunday 8:00 am - 5:00 pm (626) 447-7356

California Trail Users Coalition (CTUC)

<http://www.ctuc.info/ctuc/>

- Feb 18th MEETING • Jun 13th Operation Super Sweep

Come and Join Us CTUC meets at 5:00 p.m. at 3550 Foothill Blvd., Glendale, CA.

Our meetings are open to everyone who wishes to participate. Volunteers have a great time working together on these types of projects. To volunteer on one of our projects, please join us by calling our Chairman, Terry Kaiser at 818-353-4682. You may also email: edwaldheim@aol.com

CITY OF GLENDALE

<http://www.glendaleparksfoundation.org>

Parks, Recreation & Community Services Dept 818-548-2000

Your Friends in Trails and Open Space

- Feb 7th - Riverwalk Workday (SEE PAGE 8)
- Feb 14th - Trail Building 101 (SEE PAGE 5)
- Feb 21st - Wilderness Workday

• Feb 1st - Day Trip to Goleta Butterfly Grove

Description: The Monarch Butterflies are known to migrate. Those on the east coast and mid-America, migrate to central Mexico. Those in the Rockies, migrate to eucalyptus groves along the West coast. The site closest to us is located in Goleta, just north of Santa Barbara. This is also reported to be the largest aggregation site in Southern California although there are larger sites further north.

Bring: Sturdy shoes such as hiking boots, layered clothing, and bring plenty of water, lunch/ snacks. You might also consider going to lunch after your visit to the grove. There are lots of good restaurants in Goleta, Santa Barbara or Summerland.

Carpool / Meeting time: Meet at Towsley Canyon outside the gate in the parking area and look for your leader. We will organize carpools at 9:00 AM for a 9:15AM SHARP departure (Note: Butterflies don't fly until it warms up, which is about 10:30AM). Please be respectful of your driver's support by contributing something at the end of your carpool to help defray the cost of gas - THX.

Driving Directions to the grove: Take the I-5 going North towards Sacramento. Exit at SR-126 West to Ventura. From the I-5, at top of ramp, turn left onto SR-126. After almost an hour, SR-126 will merge with I-101 going North towards Santa Barbara. Continue on I-101 to the Hollister Exit. After 0.6 miles, turn right at the stoplight for Ellwood School. Free parking is available at Ellwood Mesa Open Space.

Drive: Driving distance is ~ 100 miles, approximately 2 hours.

Getting from Parking Lot to Grove: From the parking lot, there is a short half-mile hike to the groves. If you want to drive yourself to the grove, follow the trail markers highlighting the path and just walk on in by yourself. We'll probably see you inside the grove when we all get there - don't wait for us at the grove entrance! GPS coordinates for the parking lot: 34.429018, -119.897017,.

More Information: Check out www.GoletaButterflyGrove.com on line. The site is maintained by the City of Goleta. They also have a graphic display of the resident population of Monarchs that peak during December and January. The butterflies begin to arrive in November and begin to depart in February. They also have a map of the drive.

Leader: Dianne Erskine-Hellrigel

• Feb 7th - Weldon to East Canyon/ Mission Peak So local and so popular last time.....!

CHOICES!! This is a 6 mile or a 9 mile hike, depending upon the option you select - either one gets you ~ 1500' gain!

Shorter Hike route - Approx. 6 miles and ~1500' gain : Up Weldon Canyon, Down East Canyon.

Longer Hike route - Approx. 9 miles and ~1500+' gain: We start by going steeply up Weldon Canyon, along a beautiful tree lined service road to meet the top of East Canyon. Here we will say adios to the hikers on the shorter route, as they go down East Cyn. The rest of us will climb up to the top of East Canyon where it meets the top of O'Melveny Canyon. We hike across the top through beautiful oak woodlands and over to Mission Peak. We will have a lunch/ snack stop here before returning to the top of East Canyon and back down to our vehicles via East Canyon.

Meet your leader: At the base of East Canyon at 7:30AM for a 7:40AM

SHARP departure. Park on the Old Road, see detailed directions below.

(Short) Carpool: We will leave most of the cars at the East Canyon location, and carpool in a few cars a very short distance to the Weldon Canyon Trail head, up the Old Road. People who opt for the shorter 6 mile hike should plan to leave their cars at East Canyon. Note: At the end of the hike, a few of us will act as Carpoolers, taking the people who kindly drove you the short distance to Weldon Canyon, back to their cars. (THANK YOU in advance for your assistance).

Directions to East Canyon meeting spot: Exit the I-5 freeway at Calgrove. Turn west. Follow Calgrove around a curve and through one signal. You will now be on The Old Road. Pass Towsley Cyn; Pass the Post Office; Pass the Church of the Nazarene but immediately after passing the Church of the Nazarene, park along the side of the road, on the right. This is where we will meet.

Bring: Lots of water, snack/lunch, poles if you have them, a camera if you have one. Good shoes with tread, extra layers as it can be windy on this trail.

Rated: Moderate/ Moderate ++, depending on whether you choose the longer one.

Adventure Pass: Not required

Dogs: Ok, if on a leash and well-behaved with other dogs / people

Leader: Steve

Community Hiking Club (CONT)

• Feb 14th - Romantic couples hike at Towsley

Description: It is Valentine's day so come hike by yourself, with a friend, or with the one you love.

The Pacific Tree (Pacific Chorus) frog begins mating in early winter to early spring, depending on local conditions. When it is time, the males migrate to water where they start calling "ooh-yeeh" or ribbiting loudly. This lures the females to the water and they mate. We'll be taking an easy stroll into Towsley Canyon, stopping to listen to the Pacific Chorus Frogs calling out for a mate. Hopefully it will be a warm day, which will bring the frogs out for us. During the stroll in, Dianne will tell us all about these romantic crooners.

Meet your Leader: At 8:00AM outside Towsley Canyon in the Parking lot for a 8:15AM SHARP departure down the trail.

Directions to Towsley meeting spot: From Valencia, take the I-5 South to the Calgrove exit. Exit, turn right. Go through the signal and immediately turn right into the driveway for Towsley Canyon. Park OUTSIDE the gate. Look for hiking club members and your leader there.

Hiking: Feel free to come just for the frog viewing/ serenading, if you like. After visiting the frogs, we'll hike the remainder of the Towsley loop at a moderate pace. The hike will be 6 miles, with an option to add on 1.6 miles more if you like. There are a few steep hills, but it is rated only moderate.

If it has recently rained, the trail will be muddy, so if this is the case, ensure you have boots with lots of tread, and bring poles if you have them. Rain falling will cancel the hike.

Bring: Water (2 liters), snacks, hat, sunscreen, camera. Wear layered clothing, as it can get colder and windier on the upper switchbacks of Towsley.

Rated: Easy/Moderate **Leader:** Dianne

• Feb 21st - West Robles trail to Angel Vista

Description: This hike follows Oak Creek Canyon Trail south and Los Robles Trail west to Angel Vista at 1530 ft. Angel Vista's picnic table is a great place for a break, and to enjoy outstanding views of the Conejo Valley, the Oxnard Plains, and (on a clear day) the Channel Islands. Hike is seven mile round trip (out and back) with an elevation gain/loss of about 1000 ft.

Meet your Leader:

1. Carpool from Santa Clarita Valley (SCV): Meet at Towsley Canyon at 6:45AM outside the gate in the parking lot. We will leave at 7:00AM sharp. Please be respectful of your driver's support by contributing something at the end of your carpool to help defray the cost of gas - THX.

Or....

2. Meet the Leader at the trailhead at 8:00AM, ready to leave to hike at 8:15AM SHARP, see Directions below.

Directions to Trailhead (from SCV): Take Hwy 5 South to the 405 South. Exit on to Hwy 118 West, all the way until it turns South and becomes the 23 South. Get off on to the Hwy 101 North toward Camarillo/Oxnard/Ventura etc. Fairly soon, take exit at Moorpark. Turn left on Moorpark and head South for 1/2 mile. Turn Right on to Greenmeadow Ave. for 1/4 mile and park in the lot on the left. Do not go in to the first lot area on the corner of Greenmeadow and Moorpark!

Bring: Hiking poles, if you have them, an extra layer in case it gets hot/cold, lunch/snack, water (2 - 3L), a camera, hat and sunscreen.

Adventure Pass: No.

Dogs: OK, on leash and if well behaved around people / other dogs. If you bring a dog, you will need to drive yourself to the trailhead.

Rating: Moderate **Leader:** Hola Ola

• Feb 28th - Trail Canyon Trail to Tom Lucas

Background: The Station Fire scarred this area but it's time to re-discover the highlight of this hike - a 30' waterfall, 2 miles up the canyon. Although the view is great from the trail, those who would like to push the limits can hike down to the bottom or climb to the top of the falls by way of side trails. Tom Lucas (or barefoot Tom) trail camp was named after one of the first rangers in the area.

Description of Hike: The hike starts on a dirt road passing cabins. In a short distance the road changes into a single track trail and we will cross Gold Creek a few times. One mile into the hike we leave the creek bed and follow switchbacks up to the left until the falls come into view. It would be best for beginners to turn around at the falls. We will follow the trail to Condor Canyon. We return the same way we came.

Meeting Your Leader/ Directions to Trail head:

The trailhead is not too far from SCV, so you could go directly (directions below).

If you would like to Carpool: Meet at Towsley Canyon front parking area outside the gate between 08:00 and 8:10 AM. We will leave at 08:15 AM SHARP. Take the I-5 to the 210 freeway east. Exit the 210 Frwy at Sunland Blvd and turn left. In 0.9 mile turn left at Oro Vista Ave. Drive 0.8 mile and turn right onto Big Tujunga Canyon Road. Drive 4.3 miles and turn left onto a dirt road (Note: There is no sign to alert you to the turn. If you drive past Wildwood Picnic area, turn around. On your way back there is a sign pointing out the road). Drive up the short winding dirt road to a junction, then go right, and down, into Trail Canyon. Park at the Trailhead under the oaks.

We will start the hike at 9:00 AM SHARP.

BRING: Hiking poles, if you have them, extra layers in case it gets hot/cold, lunch/snack, water (2 - 3L), a camera, hat and sunscreen. Wear long pants for this one.

Adventure Pass: Yes, 1/ car for those who drive. These can be obtained at Sports Chalet in Stevenson Ranch or any BIG 5 Sporting Goods store; \$5 for a day pass, \$30 for a year pass.

Dogs: OK, on leash and if well behaved around people / other dogs. If you bring a dog, please drive yourself.

Hike Length: 8-9 miles R/T with 2000' elevation gain.

Hiking Time: 5 Hours

Rating: Easy to the waterfall; Moderate with a touch of adventure after that.

Leader: Dave Pulsifer

WHAT ARE YOUR TRACKS?

TRACKS LEFT BY FOREST ANIMALS



WHAT KIND OF TRACKS DO YOU LEAVE IN THE FOREST?



HABITAT WORKS

<http://www.habitatwork.org>

Kim Clark or Tom Persons 818-353-4653

For more information call or e-mail to: wildlife@habitatwork.org

Haramokngna American Indian Cultural Center

www.haramokngna.org

663-449-8975.

• **Volunteers** As a cultural, environmental and arts organization, Haramokngna American Indian Cultural Center shares the flavor of Native American history, culture, traditions and arts with the Los Angeles community. We are always looking for energetic individuals ready to represent the Cultural Center during special events and regular office hours.

• **Check the Pukuu's Amazon Store** <http://astore.amazon.com/pukucultcomms-20>

When you order items thru our store, a percentage is donated to our center. THANK-YOU

High Country Riders

Forest wide equestrian volunteer group that packs Equipment, Material and Supplies etc. to your Trail or worksite. Packs Trash & Rubbish out of the Forest.

Contacts: Jonathan Schultz phone: 951-830-3400

e-mail: maujds@earthlink.net

- Forest Certified Animal Packer
- "C" Crosscut Saw Certifier
- Master Teacher for "LNT"
- Chainsaw "B" faller

Contacts: Glen Foster phone: 760-949-3497 or 760-508-0344

- Certified Packer
- e-mail: pjgwfoster@aol.com

JPL TRAILBUILDERS

Kathie Reilly 626-379-8429 (cell)

Jack Russell 562-861-3187

(Rain day before or day of outing cancels the outing)

- Feb 21st Outing

WHAT'S HAPPENING:

As we keep repeating, we next intend to continue maintenance of the Mt Lowe West Trail from where we left off about the middle going toward the summit. There's a large patch of poodle dog there.

This time of year, it seems to be less threatening. Besides, some of our group seem immune to it, so they can tackle those parts. The rest of us can cut back the rapidly growing scrub oak, and repair tread.

Mount Wilson Race<http://www.mountwilsontrailrace.com/HOME.html>

- Feb 22nd Outing (SEE PAGE 9)

Pete Siberell Chair, Mt. Wilson Trail Race

Mount Wilson Bicycling Association <http://mwba.org/>

Contact: Mitch Marich, info@mwba.org

- Feb 15th 8:00 am - 1:00 pm, MWBA Trailwork

Check back <http://mwba.org/> or email info@mwba.org for information on a particular month.

Come work on the trails with us and get a free shuttle ride! It's pretty simple; there are only 3 steps. Send an email to trailworktoride@mwba.org for more information.

Mount Wilson Institute

P. O. Box 1909, Atlanta, Georgia 30301-1909

(404) 413-5484 <http://www.mtwilson.edu/>

Support Mount Wilson Observatory

We Need Your Help - Mount Wilson Observatory is privately owned and receives no continuing state or federal support. You can help ensure the continued operation of this science heritage.

- **Join** our Friends of Mount Wilson Observatory organization to receive a variety of member benefits and stay informed on the latest scientific and other activities from the mountain.
- **Contribute** to our Second Century Campaign. As Mount Wilson continues into its second century, a capital campaign is being developed to preserve this great observatory for future generations.
- **Be a Docent Tour Guide** - We welcome applications from individuals interested in participating as docents in our very active guided tour programs.

For application information go to: <http://www.mtwilson.edu/docents.php>.

Pacific Crest Trail Association <http://www.pcta.org>

FACE BOOK: <http://www.facebook.com/#!/PCTAFan>

Liz Bergeron lbergeron@pcta.org

Sacramento, CA Phone: (916) 285-1846 x 26

- Feb 11th to 16th Penrod Canyon outing

Please call or email Don Line: (619) 520-9431 or donline41@gmail.com

- Apr 11th Annual Meeting

Come find out more about how your gifts and volunteer time have made a difference this year on the trail. Attend our annual meeting in the Bannon Island Room at Sierra Health Foundation, 1321 Garden Highway, Sacramento, CA 95833. And join us afterward for refreshments at an Open House at PCTA's headquarters next door.

- Apr 22nd to Apr 24th 2015 Annual Day Zero Pacific Crest Trail Kickoff (ADZPCTKO)
- Apr 24th to Apr 26th 2015 Annual Day Zero Pacific Crest Trail Kickoff (ADZPCTKO)

You can attend either session, but not both.

The 2015 Annual Day Zero Pacific Crest Trail Kickoff (ADZPCTKO) will be held again this year at Lake Morena County Park. It is not organized by the PCTA. Please visit adzpctko.org for information and registration. Registration for ADZPCTKO 2015 begins in early March at adzpctko.org.

For questions regarding Kick Off please email: Carl "Kelty Kid" Siechert at carl@pct77.org

SAN GABRIEL TRAILBUILDERS

VOLUNTEER GROUP NEWS

<http://www.sgmtrailbuilders.org>

Ben White: 626-303-1078

ben@sgmtrailbuilders.org

We work on the first, third, and fifth Saturday of each month Trail working volunteers may join the San Gabriel Mountains Trail Builders in the continued restoration process for trails in and around Crystal Lake, East Fork, Heaton Flats, Upper & Lower Bear Creek, the Baldy Area and many other locations on the Angeles National Forest.

Learn how to use all the Trail tools to work the trails. Help you learn how to get your certificates for Chainsaw and Crosscut Saws use on the National forest.

If you would like to volunteer your time, please send e-mail to feedback@crystallake.name I will let you know when, where, and what you need to know to join us.

MEETING LOCATION :

San Gabriel Canyon Gateway Center,
1950 North San Gabriel Canyon @ 7:30 am

SCENIC MT. LOWE RAILWAY

<http://www.mtlowe.net/>

Brian Marcroft 562-868-8919

E-mail: Emworks@verizon.net

Sierra Club www.angeles.sierraclub.org/pasadena/

1750 North Altadena Drive, Pasadena, CA 91107

213-387-4287

For more calendar details go to www.angeles.sierraclub.org/pasadena/

• Feb 4th 7:00 PM Pasadena Group Monthly Meeting & Program

Pasadena Group Monthly Meeting & Program: San Gabriel Valley resident Pamela Zoolalian will present an illustrated program "My Solo Hike on the John Muir Trail". Pamela undertook this 272 mile hike from Yosemite to Mt. Whitney in a personal effort to raise \$5000 for the non-profit organization Aspire2Be, which she founded to empower young women to dream, create, and grow through art programs, action sports, and other outdoor experiences. Pamela is an accomplished action sports athlete who has successfully competed in numerous activities of the International Gravity Sports Association World Cup series, as well as other competitive action sports events. Seven years ago she volunteered to be a youth mentor to other young women and inspire them to reach their dreams just as she had. Meeting will also include information on Group's hikes, outings, and conservation activities. Newcomers always welcome! Doors open at 7 pm; Program starts at 7:30 pm at Eaton Canyon Nature Center, 1750 N Altadena Dr in NE Pasadena. For more information contact Group Membership Chair, Elizabeth Pomeroy. , 626-791-7660, ewpomeroy@gmail.com.

- Feb 5th Henninger Flats Conditioning Hike
- Feb 7th South Pasadena Historic Walk
- Feb 12th Henninger Flats Conditioning Hike
- Feb 14th Mount Wilson Trail Work Event
- Feb 19th Henninger Flats Conditioning Hike
- Feb 21st La Canada Trails Day
- Feb 26th Henninger Flats Conditioning Hike
- Feb 28th Snowshoe/Cross-Country Ski Trip in the San Gabriel Mtns.

SOUTHERN CALIFORNIA MOUNTAINS FOUNDATION

<http://mountainsfoundation.org/> Sarah Miggins smiggins@fs.fed.us 909-382-2796
602 South Tippecanoe, San Bernardino, California 92408

For more calendar details go to <http://mountainsfoundation.org/calendar?year=2015&month=02>

• Snowshoe Ecotour

Join a Naturalist for a guided snowshoe tour in the San Bernardino National Forest. You will learn how to snowshoe, go for a guided trek through the forest, learn about how plants and animals adapt in winter and have some exploration time as well! Snowshoes, trekking poles, snack and water are included. Please wear warm clothing layers and waterproof boots or shoes. Tours are dependent on snow conditions; call for more details. Reservations are required. Participants caravan to site. Private tours can be arranged for groups of 8 or more. **Call to book your private tour today; 909-382-2790.**

Fee: Adults \$30, Kids (8-12 years old) \$20

Dates: Saturdays; 9am-12pm & 1pm-4pm. Sundays; 9am-12pm (until March 8)

- **Animal Tracking Feb 14th/28th**
- **Bald Eagle Volunteer Count Feb 14th**
- **Eagle Celebration Feb 14th**
- **Story Time Feb 7th/21st**

Tree People <http://www.treepeople.org> FACEBOOK: TreePeople

12601 Mulholland Drive
Beverly Hills, CA 90210 Telephone (818) 753-4600

For more calendar details go to: <http://www.treepeople.org/calendar/2015-02>

- **Angeles Forest Restoration SUPERVISOR ONLY Feb 1st/14th**
- **Angeles Forest Restoration Supervisor Training Feb 7th**
- **Angeles Forest Restoration Feb 19th/20th/21st/22nd/26th/27th/28th**
- **Fruit Tree Pruning Jan 10th/24th**
- **Fruit Tree Distribution Festival Prep Day Feb 6th/7th/20th/21st/27th**
- **Moonlight Hike Feb 6th**
- **Park Work Day Feb 5th/12th/14th/19th/26th**
- **Park Planting Feb 14th**
- **Santa Monica Mountains Restoration Feb 1st/7th/8th/21st/28th**
- **Volunteer Supervisor Training Feb 28th**

Volunteers of the Angeles National Forest <http://www.grassyhollow.net>

Wrightwood, CA Visitor Center Phone #: (626) 821-6737

Loren Lake lorenll@verizon.net

- **The Grassy Hollow Visitor Center and Grounds are open for day-use only**
Hours: Saturdays, Sundays and Holidays 10:00 am to 4:00 pm
Weekdays- for school groups, youth organizations, etc. By Appointment

William S Hart UHSD of Santa Clarita ANF Crew 135

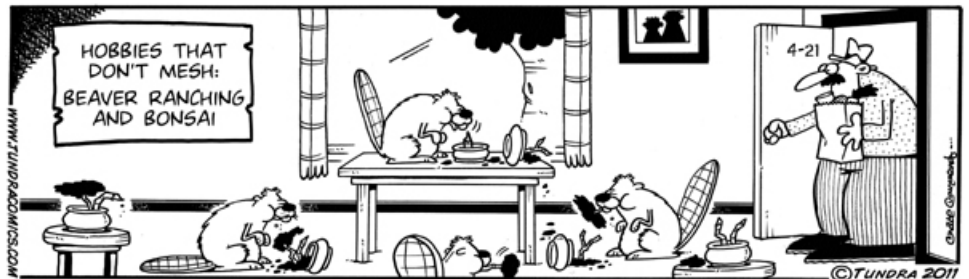
Kevin Sarkissian Lead Instructor
W S Hart Union High School District
Outdoor Recreation and Wilderness Conservation - ANF Crew 135
Regional Occupational Program
21515 Centre Pointe Parkway
Santa Clarita, CA 91350
661.877.7024 661.250.0022 X 552

www.hartrop.com/forestry www.facebook.com/ropforestry

- **Taking a break until spring**

Los Angeles River Ranger District
12371 North Little Tujunga Canyon Road
San Fernando, CA 91342

TUNDRA by Chad Carpenter, Los Angeles Times Apr 21, 2011 email: info@tundracomics.com



Volunteer Today

Send this in Right Away to

Dennis Merkel —12371 N. Little Tujunga Canyon Rd

San Fernando, CA 91342

Name _____

Address _____

Phone # (hm) _____

e-mail _____

Interests

Indicate what you would like to do. Circle area or enter your interests.

Campground Host/ Visitor Information/ Smokey Bear - Fire Prevention/

Recreation Aid / Forest Patrol /Resource Management / Computers/

Research-Librarian / Office Clerical / Tour guide/ Fire Lookout/

Conservation Education / habitat restoration and tree planting

Other: _____
