

VOLUNTEER TODAY

Dedicate Yourself to Caring for the Land and Serving the People

<http://www.fs.fed.us/r5/angeles/volunteering/>

Los Angeles River Ranger District Volunteer Newsletter Apr 2014

CONGRATULATIONS!

Long-time volunteer Hal Winton was chosen by his peers as the 2013 Los Angeles River Ranger District Volunteer of the Year. Hal can be found just about every weekend of the year in the Angeles National Forest (ANF), despite the fact he lives 60+ miles away in Harbor City. Hal makes the 3-hour roundtrip commute in order to assist the Forest Service in maintaining trails, roads, picnic areas, campgrounds and other recreation facilities throughout the District. An example of his hard work and dedication: Over the course of one weekend, he and his crew removed 25-downed trees blocking trails and roads in Charlton Flat Picnic Area. Hal was assisted by Volunteer 11, Terry Tanner, and some long distance runners he recruited for their strength and stamina. In his spare time, he is also one of the race organizers for the AC100 Endurance Run held annually in the ANF. At 80 years of age, Hal's resilience and staying power are truly amazing. Congratulations Hal – the award is well-deserved!



Electronic copy of Newsletter at:
<http://www.mtlowe.co/VolunteerNews.htm>

Tension is who you think you should be
Relaxation is who you are

March LAARD Meeting

Minutes.....	pg 2-3
In The Los Angeles Times	pg 3-4
Los Angeles Times Flash Forward	pg 4
Leaders We Would Like to Meet	pg 5-6
Training opportunities.....	pg 7-9
Safety Training, Refreshers, Orientation Opportunities	pg 10
Volunteers Needed.....	pg 11-14
Volunteer Fund raiser.....	pg 14
Volunteers Fun.....	pg 15
Volunteers At Work.....	pg 16-17
Volunteer group news	pg 18-27

Minutes of Monthly Volunteer Meeting March 19, 2014

By Kathie Reilly

Dennis presented LAARD Volunteer of the Year to Hal Winton. Voted by his peers. He is out every weekend, drives 1 hour to get here. Awesome down tree removal and tread work.

Organization Reports:

- California Trail Users Coalition (CTUC), Hal: Super Sweep of San Gabriel Canyon is June 14. For information call Barry Wetherly 818-957-1455
- Angeles Mountain Bikers and Trail Keepers, Mark: Working Lower Merrill Trail blocking shortcuts, then will get back to Castle Canyon Trail.
- Angeles Mountain Bike Patrol (CORBA), Robin and Mike, Steve: Working Strawberry and Colby Trails, done from saddle to Red Box. Sunday big CORBA event. Lots of down trees after storm, one by Potrero. LA Conservation Corps and REI grants have 3 contractors working the trails. Also working Brown Mountain and El Prieto Trails. Coming up is Tour of California and Memorial Day parade.
- Sierra Club, Don: Working Strawberry and Colby Trails where CORBA finished. Forest Service evaluation to reopen closed trails is in May when the closures expire. Hoping the trails will reopen. Program March 26 at Eaton Canyon will be Chris Nyerges on edible plants.
- JPL Trailbuilders , Kathie: Started working South San Gabriel Peak Trail since the locks at Sunset Gate of Mt Lowe fire road were not being locked properly. Brian says they are OK now.
- Angeles National Forest Fire Lookout Association: absent. Having training.
- Arroyo Seco Canyon, Tom and Patty: absent.
- Mt Disappointment 50 K: Erik is standing in for Gary. They will be transitioning the 50K Mt Disappointment race to Angeles Forest 50 K race. Big fixes are needed on Silver Moccasin/Kenyon DeVore Trails. This weekend will photograph work to be done. Currently working Mt Wilson Trail. If you need people to haul material, Erik has great resources.
- Terry Tanner: absent (on vacation)
- Scenic Mt Lowe Committee, Brian: Mt Lowe fire road is cleared to Inspiration Point. Surprisingly there were no slides after the storm, but 2 trees down.
- Boy Scouts of America, David: Eagle Project on Gabrielino Trail postponed due to bad road conditions. Road has now been repaired down to Valley Forge. Removed huge downfall on Bear Canyon Trail, Dennis was there and very impressed. Will be surveying and planning for California Trails Day which is April 12 at Vogel Flats.
- Boy Scouts of America, Verdugo: absent
- William S. Hart Trails, Kevin: absent
- Angeles Crest 100 Mile Endurance Run, Hal: Hal and Terry are still removing down trees at Charlton Flats near Reservoir road. Recruited help off of Facebook.
- Bear Canyon: Brushing from Switzers to Trail Camp and beyond. David working with them on down tree removal.
- Tree People: absent. Reforestation cancelled due to drought.
- Mounted Horse Patrol, Gene: absent
- Hermanos Pequenitos (My Little Brothers), Andreas: March cleanup at Hoegees, remove graffiti. Cleanup at Chilao Visitor Center for reopening April 1. Also Horse Flats. Campgrounds will open April 1.
- Harmokngna American Indian Cultural Center at Red Box: absent
- Mt Wilson Bicycle Assoc (MWBA), Mitch: working with CORBA on Sunset Trail and Brown Mountain Trails, then will work Mid Merrill Trail. Demonstrated a tool that breaks down and has several heads. There is a cleanup this Saturday at Eaton Canyon from the bridge to the falls. Grizzly Flat has down tree. George's Gap, World of Chaparral Trail, needs lot of tread work.
- Blight Busters: absent
- Chantry Flats, Steven: absent

Minutes of Monthly Volunteer (CONT)

USFS Tom Contreras, Forest Supervisor:

- Thanked everyone for caring for the land and helping people.
- Tree planting canceled, the trees will go elsewhere. Soil has been tested for moisture, and the last storm did not help the dry conditions
- Forest Service Chief Tom Tidwell and Associate Chief Mary Wagner will be here for a Regional review of all forests the end of April. According to Randy Moon, Regional Forester, the top 3 priorities are: 1) Provide resources to Rim Fire restoration. This will affect our Program of Work as they go up there. 2) Court settlement \$261 million from fire starters, Angeles gets \$26 mill to convert back damage from Copper fire, must spend efficiently. 3) Program of Work, money from Congress has targets
- This will be a bad fire season
- Representative Chu has a Website asking for comments on her draft bill for National Recreation Act (NRA)
- Road grading: there is not enough funding to do all the roads
- In Tom's experience, this is the hardest forest to work, very complex with competing demands. We have the largest amount of firefighters.

USFS Dennis:

- Chain saw class: Due to lots of volunteer interest, Dennis will check with firefighters to teach another chain saw class.
- Booby traps for mountain bikers: be on the lookout

Kathy Peterson, Volunteer/Partnership Program Consultant

- Williamson Rock: Environmental Analysis (EA) phase complete. Environmental Impact Statement (EIS) is coming out, and could take 18 months or more for comments and review. I

Aug 8, 1949 A1

IN THE LOS ANGELES TIMES

HISTORIC MT. LOWE MEMORIES REVIVED

Forest Service Crews Still Pitch Camp in Ruins of Once-Famous Railway Resort.

Today it is virtually forgotten...

Once a mountain resort attracting more visitors than Yosemite; the Southland's prime sight-seers' goal, reached by a spectacular two-hour rail trip from Los Angeles . .

That, just a few years ago, was Alpine Tavern atop Mt. Lowe.

Virtually forgotten today also is the story of that Mecca of the presmog era, when it boasted justifiably "See 60 cities and Santa Catalina Island." It was a story of ambitious enterprise frequently on the verge of complete success, but repeatedly set back by one heartbreaking misfortune after another.

Founded by Balloonist

Los Angeles hadn't yet become much of a city when the daring Civil War balloonist, Thaddeus S. C. Lowe conceived the project.

In 1893, he completed his first hotel in Rubio Canyon. It was reached by an electric railroad from Altadena. With the growing numbers of visitors who rode the famed "Mountain Railway" grew also Lowe's plan to extend the rail line to the very summit of Mt. Wilson. In his mind, it was to terminate, as a resort to rival the finest tourist hotels of Switzerland.

Unable to obtain rights of way on Mt Wilson immediately, he chose nearby Oak Mountain. That was the first of many disappointments for Lowe.

Cont to p4

P 3 vol. 4 Issue 13

L.A. TIMES (CONT)

Incline Railway Built

Ornate, three-story Echo Mountain House was opened on a point high above Rubio Canyon on July 4, 1893. It was reached by the skillfully engineered Incline Railway, destined to become world famous. On the face of the mountain, open, cable-drawn cars glided 3000 feet up a 62% grade that seemed to end in the sky.

In the meantime, workers pushed the railway on to Oak Mountain--renamed Mt. Lowe in honor of the intrepid builder. And materials were being hauled up for the building of Mt. Lowe Tavern in a rustic design reminiscent of Swiss chalets.

The blasting, ballasting and bridging necessary to carry the railway 3.6 miles above Echo Mountain over 18 bridges, around 127 curves between which the longest straight stretch was but 225 feet, and through deep cuts was more expensive than Lowe had foreseen. He could not afford to lay rails to the summit. Another disappointment.

Alpine Tavern Opened

But in 1896, the \$700,000 Alpine Tavern at the end of the line was opened to the public and for the next 40 years it was "the place to go" while in Southern California.

Four years later, the entire system of railways, powerhouse and hotels was sold to the Pacific Electric. As the years went by improvements were made, the tavern was enlarged and Mt. Lowe attracted travelers from near and far. Hundreds of famous names were inscribed in its guest book.

During ensuing years, a series of events seemed to conspire to put the resort out of business. The hotel at Rubio Canyon was demolished by a landslide. Fire destroyed the buildings on Echo Mountain and repeatedly menaced the trestles and road bed. Windstorms damaged trolley poles and swept trees across the tracks.

Final Blows

In spite of all these difficulties the railway operated its 40 years without an accident.

The final blow came on Sept 15, 1936, when the Mt Lowe Tavern burned to the ground. One of California's most cherished landmarks was gone.

For the Mt. Lowe railway, the final blow was in March, 1938 when a swirling torrent raged through the ruins of the tavern and swept down the canyon to carry away two of the largest bridges and undercut the roadbed badly.

A month later, two people and a dog made their way slowly down the mountain afoot. They were Guy Fess, Mt. Lowe Caretaker, and his wife. The once populous resort was abandoned.

Each summer of late, a Forest Service fire-fighting crew pitches camp in the "basement" of the destroyed tavern. Foreman of the group is L.T. Gothy, who since he was 14 had collected souvenirs, photographs and historical data on Mt. Lowe. His bulging scrapbook is studied by visitors who walk the three-mile truck trail to the ruins from the Mt. Wilson Highway.

At the old hotel site, the passenger platform has been kept immaculately clean and neat, with wrought-iron waiting benches all in place as if awaiting a carful of carefree vacationers to round the bend and pull to a stop in front of the historic resort.

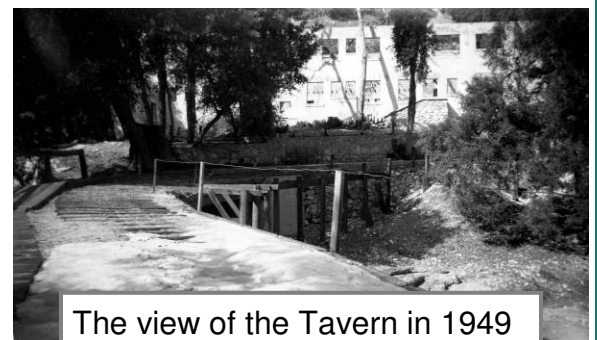
IN THE LOS ANGELES TIMES FLASH FORWARD!

The Mt. Lowe railway opened on July 4, 1893 and was met with quick interest and success. For the seven years during which Lowe owned and operated the railway, it constantly ran into hard times. The railroad was placed into a foreclosure sale on March 28 1899.

On Mar 15, 1959 the tavern remains were dynamited and then bulldozed. The power house at Echo was dynamited in 63.

The Forest Service no longer has the firefighters camp in the forest to be ready to fight fires.

The \$700,000 used to rebuild the tavern, is equal to \$16,313,430 in 2014 dollars



The view of the Tavern in 1949



Leaders We Would Like to Meet

"I guess if you've spent your entire career convincing people that climbing to the top of a mountain just to fight a forest fire is a good idea; you probably know a little bit about leadership"

- unknown citizen to Curtis Heaton, US Forest Service Fire Staff Officer

Have you ever thought about having the opportunity to interview someone you respected and admired as a leader? To ask them how they handled a critical moment where they had to make a difficult decision; or what they think it takes to be an effective leader; or who helped them along their path to becoming a leader?

We tend to overlook the leaders in our midst. There is no outside source of highly qualified leaders, many people in the wildland fire service are widely recognized as extremely effective leaders. Most of us, given enough time, can think of one or more leaders we would like to talk to. Our individual choices would be a diverse collection of the obscure and the well-known, of the young and old, and everything in between. The intent behind this interview is to begin recognizing those that have spent their career providing exemplary leadership to firefighters and capturing their lessons for future leaders.

Lynn Biddison looks at the wildland fire service through eyes that have seen 60 fire seasons, starting as a 16-year old firefighter with the US Forest Service and carrying through to his current job, representing a fire retardant company. The Biddison family can trace its association with firefighting and the Forest Service back three generations to the infancy of the agency. His grandfather, Jim Biddison, was the first Forest Guard at Bouquet Canyon on the Angeles National Forest in the years prior to World War I. He patrolled an area on horseback that is now crisscrossed with freeways. His father was a suppression crew foreman in the Civilian Conservation Corps program during the 1930's and eventually worked his way up to be the Assistant Fire Control Officer on the Angeles National Forest.

Lynn Biddison started as a firefighter in 1943 on the Angeles National Forest. He volunteered for the Marine Corps and the Navy, but colorblindness kept him out of both services. He was drafted in early 1945. At the induction station he volunteered for the paratroops, but was assigned to the Navy Seabees and served in the Philippines until the end of the war in the Pacific. Once out of the Navy, he went back to work for the Angeles National Forest in 1946 as a Tank Truck Operator at Oak Flats. He became the Tanker Foreman at the District Ranger Station in what is now downtown Newhall. That job also included spending two days a week as the district dispatcher. During that fire season he witnessed the first time a helicopter was used on a fire, it was the Bryant Fire in Big Tujunga Canyon.

In 1950, Biddison was assigned to the newly formed Chilao Hotshots as one of the Crew Foremen. He was in charge of a 10-man crew, one of three that made up the full 30-man hotshot crew. His crew was made up of Navajo and Hopi Indians from the Sherman Institute at Riverside, California. Then the Superintendent left and he was promoted into that position. He became the Assistant Ranger on the Arroyo Seco District. Biddison went on to the Cajon District on the San Bernardino National Forest as the District Ranger. By this time in his career, he was sent as a Fire Boss to large fires all over the country, including a Zone Fire Boss assignment on the infamous Sundance Fire.

Cont p5.

Leaders We Would Like to Meet (cont)



Lynn Biddison, Helijumper, 1953

Biddison was promoted to the Assistant Regional Forester for Fire. When he arrived in Region 3 they had a fire budget of \$2 million and no hotshot crew program. When he left 12 years later, the fire budget was \$30 million and there were 13 hotshot crews in the region. Biddison's last posting with the US Forest Service was as the Regional Fire Director. He retired from that position in 1982, nearly 40 years after he started with the Forest Service.

What is the most important characteristic for a leader?

To be a good leader you need to be out in front. Don't ever ask anyone to do something you won't do yourself. I'll give you an example from a fire on the Sierra National Forest. I was called up as a Line Boss. The fire was in the Kings River Canyon and was giving them fits. We had a bunch of Indian crews from New Mexico and Arizona and they didn't want to go down in that canyon at night. I couldn't really blame them as nobody really knew what the fire was doing down there. So I went ahead on down over the rim to check it out. After I came back up we had no problem getting the crews to go down there and tie the line into the river.

Are leaders born or made?

A little of both...you have to have the desire. You may be born with a natural presence that others will follow, but if you don't care, you won't be a good leader. You have got to want to be one. I also think that you can always learn to be a better leader. For example, the Fish Fork Fire burned in the very rugged upper part of San Gabriel Canyon. It eventually burned to the area of Mount Hawkins Lookout. They had been trying for several days to build a hand line off the top of Mount Hawkins down to the San Gabriel River and had not been successful. They took me off the hotshot crew and sent me over there as the Sector Boss and we got the line done. One day, afterward, I was sitting there with an old-time Ranger from Taos, NM, and he said to me "We were really happy when you came to work with us because the guy before never got a darn thing done for so many days. But you know, you don't have to do this like an Army drill sergeant either." I learned from that.

Why do you think people follow you?

The second year I was Superintendent at Chilao, the program changed from regular hires to having state inmate Firefighter's being supervised by the Forest Service as a year-round hotshot crew. I found this to be a real education for a young man...they weren't in prison because they liked to work. Once you set a standard and they knew you would accept nothing less, they met it. One time, we were sitting up on a mountain someplace, having lunch at midnight, they said "You make us work harder than anyone we have ever seen, but we do it willingly because we're convinced you really think it needs to be done. If we thought you were telling us to do it because we're inmates, we wouldn't do it for you."

TRAINING OPPORTUNITIES

Angeles National Forest Fire Lookout Association Training for 2014 Season

New Volunteer Training

YOU MUST ATTEND ALL THREE CLASSES, we offer them at two different times. You need to attend only one of each of the classes.

To volunteer and begin training, just show up for the first class.

No RSVP or advanced sign-up is required.

Returning volunteers, please scroll down for Reconnect Class information.

Class 1:

Orientation

- Saturday, May 3, 10:00 am — 12:00 noon
- Thursday, May 8, 6:30 pm — 8:30 pm

Class 2:

Interpretation – Natural History

- Saturday, May 3, 1:00 pm — 4:00 pm
- Thursday, May 15, 6:30 pm — 9:30 pm

Class 3:

Operations

- Saturday, May 17, 9:00 am — 4:00 pm

Any questions? Please go to <http://www.anffla.org/contact/>.

All new volunteer classes will be held at:

Los Angeles River Ranger District Office
12371 N. Little Tujunga Canyon Road
San Fernando, CA 91342

Reconnect (for returning volunteers):

RETURNING VOLUNTEERS MUST ATTEND THIS CLASSES, we offer it at two different times. You need to attend only one of the classes.

Reconnect

- Saturday, May 11, 10:00 am– 1:00 pm
- Thursday, May 23, 6:30 pm – 9:30 pm

Any questions? Please use our contact form @ <http://www.anffla.org/contact/>

Reconnect Training will be held at:

Los Angeles River Ranger District Office.
12371 N. Little Tujunga Canyon Road
San Fernando, CA 91342

TRAINING OPPORTUNITIES

Danny Rhynes Training Center does allow volunteers to participate in their classes. There is a small fee of \$25.00 for supplies and materials. An SF-182 needs to be submitted and sent to drtc@fs.fed.us. The SF-182 is the Request, Authorization, Agreement and Certification for Training Form, which is used to document instances of completed civilian employee training. Payment can be made on the first day of class with cash, check or money order (payable to US Forest Service). Please see link below for their training calendar - this is also where you can find the SF182 form required for these classes.

Danny Rhynes Interagency Training Center on the San Bernardino National Forest is offering local level courses this training season. These courses are as follows:

- **1st Aid/CPR** –April 17-18, 2014
- **Fire Safety Refresher** – April 9-10, 2014, May 7-8, 2014, May 19-20, 2014
- **EMT Refresher** – TBA
- **Individual/Peer Support & Group Crisis Intervention** (Critical Incident Stress Management Training sponsored by International Critical Incident Stress Foundation), March 31-April 3, 2014 (see link below to access training announcement)
- **Resource Advisor Refresher/Workshop** – April 7-8, 2014
- **S230/S231** – April 7-11, 2014
- **Basic 1st 40 Firefighter Training** – April 21-25, 2014
- **COR Refresher** – April 21-25, 2014 (registration through NPI – see link below to access training announcement for instruction)
- **COR Level II** – April 28-May 2, 2014 (registration through NPI – see link below to access training announcement for instruction)
- **FPO Refreshers**, April 30, 2014 (FS502/session #659), May 22, 2014 (FS502/session #660)
- **EVOT** – April 30, 2014 at DRTC
- **Old Fire Staff Ride** – May 14-15, 2014
- **FPO Full Course**, June 9-13, 2014 (FS501/session #99)
- **MTDC Chainsaw** – April 5-6, 2014

See attached link to the training center website for additional sessions, session details, and session registration information. For enrollment in courses please work through your Forest Training Officer/District Training Representative. If you have any questions, please let us know.

<http://www.fs.usda.gov/goto/sanbernardino/schedule>

Danny Rhynes Training Center
(909)382-2984 phone (909) 382-4192 fax
drtc@fs.fed.us Email

Danny Rhynes Training Center
602 S. Tippecanoe Avenue
San Bernardino, CA 92408

<http://www.fs.usda.gov/goto/sanbernardino/home>

TRAINING OPPORTUNITIES



HAT Training VHC WLACC 2014

Become a USFS approved Trail Boss

**Supervise Trail Maintenance for the youth in your group.
(Great Eagle Projects!)**

A GREAT TRAINING PROGRAM NOT ONLY FOR BOY SCOUTS BUT FOR ALL VOLUNTEERS!

Let us train you and other adults in your group so that you are qualified to do Trail Surveys and set up projects and complete them on your own.

Purpose:

To provide properly trained personnel with the ability to supervise either "Trail Blazing" or "Forest Conservation" program projects at the unit level.

All Trail Bosses will be trained by USFS Personnel or their approved Trail Boss Trainer.

Requirements:

Must be 18 or older.

Complete 4 days of 6 hours each in training exercises with the Trail Boss Program.

Conduct an approved Weekend project. Minimum 10 hours with your unit. (or another unit) under your supervision, and have it checked out by the Trail Boss trainer.

(Training days do not have to be consecutive days, weeks, or even years).

Training objectives are Tool, Personal Safety, Condition Survey, Brush Clearing, Tread Work, French Drains, Trail Dips, Soil Sacks, Water Bars, Switchback Construction, Tread Support, Etc.

Bring: Gloves, Hat, Water and Lunch, 10 essentials, Day pack, Work clothes.

Available training days in 2014 are: • Apr 26th 27th • May. 3rd 4th

Call to confirm training day, Time and Meeting Place. (Course cancels if no calls)

We meet at McDonalds at Bouquet Cyn. Rd. & Valencia Blvd, in Valencia at 8:00 AM.

Contact:

Patrick Aubuchon, Chief Trail Boss.

818-781-7465 - bigaub@sbcglobal.net

Safety Training, Refreshers, Orientation Opportunities

Each month the Angeles National Forest publishes an updated ANF Volunteer Project Directory online at

http://www.fs.usda.gov/Internet/FSE_DOCUMENTS/stelprdb5411800.pdf , which provides information about current and future volunteer projects.

For our May edition of the directory, we would like to feature training opportunities that are available to Angeles National Forest volunteers. This could be safety training, first aid courses, trail building skills, volunteer orientation classes – or any other kind of training that would be helpful and relevant to new or seasoned volunteers.

Do any of you LARRD Volunteer Newsletter readers have training courses that you would like to include in the project directory feature? If so, please contact Kathy Peterson at AngelesNFVolunteers@gmail.com

And while we're thinking about training and safety, now would be a good time to review your volunteer agreement and Job Hazard Analysis (JHA) with your project supervisor, to ensure that all of the information is current.

And while we're thinking about job hazards, now would also be a good time to inspect your personal protective equipment (PPE), and replace any worn out or used up items. Minimum PPE standards for various tasks are located in the Health and Safety Code Handbook, which you can download for free at <http://www.fs.fed.us/im/directives/fsh/6709.11/FSH6709.pdf> . Remember that if you engage in any of the listed tasks, you're required to use the listed PPE at all times. The JHA for your project should include the required PPE for your tasks.

I wish I had a nickel for every time I heard my Forest Supervisor remind me, “No job is so important that we can't take the time to do it safely.”

Best wishes as we launch another “SAFETY FIRST!” field season.

Kathy Peterson
Volunteer/Partnership Program Consultant
Angeles National Forest
AngelesNFVolunteers@gmail.com

VOLUNTEERS NEEDED

USDA Forest Service / Los Angeles River Ranger District

California Trails Day 2014

DATE: April 12, 2014, meet at 8:00 AM / Registration: **8:00 to 8:30am**

LOCATION: Meet at Vogel Flat Picnic Area parking lot

EVENT: The USDA Forest Service, National Forest Foundation (NFF) and associated Los Angeles River Ranger District (LARRD) volunteer organizations will celebrate California Trails Day on April 12, 2014. The celebration will include 4-6 hours of trail work on the Big Tujunga Canyon Trail System. This event is a partnership between the volunteer groups of the US Forest Service Los Angeles River Ranger District and the NFF. We will break for lunch and a short ceremony about California Trails Day at 1:00 PM in the Vogel Flats picnic area. Activities will end at 2:30 PM. A COMPLIMENTARY LUNCH WILL BE PROVIDED BY THE NATIONAL FOREST FOUNDATION.

This activity is open to all volunteers, including sponsored groups. For those volunteering for trail work for the first time, please identify yourself to the registrar so we can arrange for a Trail Boss to provide instruction and proper tools. Please bring your personal protective equipment listed below.

Personal Equipment to Wear while Working:

Work gloves, work shoes, work clothes (long sleeve shirts and long pants), sun protection hat, hard-hat (can be provided if needed), Ten Essentials (include a personal First Aid kit), Water (2 quarts), high energy snacks. Be prepared to hike about a mile and work until 12:30.

DIRECTIONS: From the 210 Freeway in Sunland, go north on Sunland Blvd. to Oro Vista (0.7 miles). Turn left (north) on Oro Vista, which in 0.9 mile will become Big Tujunga Canyon Road. Continue on Big Tujunga Canyon Road and drive an additional 6.6 miles to Vogel Flats Road. Turn right and drive downhill to the parking lot at the Vogel Flats Picnic Area. Allow 25 minutes driving time from the 210 Freeway. Please carpool if possible.

For Additional Information, Please Contact one of the Following:

USDA Forest Service, Los Angeles River Ranger District, Little Tujunga Ranger Station

(Daytime): Dennis Merkel, District Recreation Officer
(818) 899-1900 X229 email: dmerkel@fs.fed.us

(Evenings): David Ledford, Volunteer Leader, Training
(310) 373-2111 email: GDLedford@verizon.net

Additional Training Opportunities Scheduled for the Future:


May 3, 2014, Advanced Leader Training (Front Country)

June 7, 2014, National Trails Day (Basic Techniques)

September 6, 2014, Advanced Leader Training (High Country)

California Trails Day and National Trails Day training activities are open to all

VOLUNTEERS NEEDED



CTUC

PROUDLY PRESENTS

OPERATION SUPER CANYON SWEEP-2014

WE NEED YOU
SATURDAY, JUNE 14th, 2013
8 A.M. TO 3 P.M.

WE WILL BE CLEANING UP THE SAN GABRIEL CANYON.

**SAN GABRIEL, OHV AREA, SAN GABRIEL CANYON ROAD,
HWY 39, JUST NORTH OF THE EAST FORK BRIDGE AND
NORTH OF AZUSA**

LUNCH WILL BE PROVIDED

TO VOLUNTEER AND FOR FURTHER INFORMATION PLEASE CONTACT:

BARRY WETHERBY AT 818-957-1455 E-MAIL BHWetherby@aol.com
3700 Santa Carlotta St., La Crescenta, Ca. 91214

TERRY KAISER at 818-262-0315 E-MAIL hdconcerns@ca.rr.com

WE NEED LOTS OF VOLUNTEERS.

***CTUC IS A 501 [C] (3) NON-PROFIT CORPORATION,
ALL DONATIONS ARE TAX DEDUCTIBLE!
ID # 95-4690961 & 2028091***

BBB #13191248

Dagger Flats Trail Work

VOLUNTEERS NEEDED

Dagger Flats Trail is currently impassible. However, The Community Hiking Club will be refurbishing this trail so we can hike it together with anyone who wants to come on September 6 to celebrate the 50th Anniversary of the Wilderness Act which became law on September 3, 1964.

No experience required. Dianne will teach each of you how to properly maintain a trail. We can use up to 10 volunteers for each date. Please don't sign up if you cannot make it. Even if only ONE person signs up, Dianne will go with you! We will be working in a closed area of the forest, so it is imperative that you be on time to the meeting place. We will be going in behind a locked gate!

Meeting Place: Bear Divide Picnic area. From the I-5 freeway, take the SR-14 freeway North. Exit at Sand Canyon. Turn right. Proceed up the canyon, passing all the houses. After you have passed all the houses, you will see a sign that indicates that you are entering the Angeles National Forest. Continue up up up the hill until you see a wood sign that says Bear Divide Picnic area. Turn right. Park. This is our meeting place. If you start going downhill and the road sign has changed to Little Tujunga Road, you have gone too far. If you would like to work on the trail during the week, message Dianne and we'll try to work out some dates together.

Meeting time: 8:30 at Bear Divide. Allow ½ hour to get there from Valencia.

Dates:

- April 6th, 13th
- May 25th
- June 1st, 8th, 29th

RSVP to: zuliebear@aol.com

Community Hiking Club

communityhikingclub.org

661-259-2743

Dianne Erskine Hellrigel email: zuliebear@aol.com

Amgen Tour of California

Anyone interested in assisting the Amgen Tour of California? Once again, this challenging race will bring elite cyclists from all over the world to Angeles National Forest on May 16 & 17

May 16 is on the SCM but May 17 is the same route (Aliso Canyon to Forest Highway to Mill Creek to Clear Creek to Angeles Crest Highway down to Pasadena) they took last year. Some of the volunteers came out to help, so if they want to again, have them contact me.

Michael McIntyre

District Ranger

Los Angeles River Ranger District

12371 North Little Tujunga Canyon Road

San Fernando, CA 91342

(818) 899-1900, ext. 223

(818) 896-6727 (FAX)

Gabrielino Trail Help

The Gabrielino Trail from Red Box to West Fork has been worked by volunteer crews in the past and is on the list for future trail work. Bear in mind we have over 375 miles of trails in the Los Angeles River Ranger District alone and the majority were damaged or destroyed by the Station Fire so it will be a long time before all trails are restored to a degree considered adequate. Some of the damage is so extensive that contractors have been hired to help restore the trails and in fact a project will begin on the Strawberry Peak/Colby Canyon Trail the first of next month to restore the washed-out areas. Forest Service partners such as the National Forest Foundation and Friends of the Forest are actively participating in restoration efforts. The Gabrielino Trail has had several Boy Scout Troops as well as other volunteer groups provide maintenance. We are always looking for more volunteers to assist throughout the District. If you know of anyone interested, please contact me.

Thanks,

Dennis Merkel, CPRP, FPO

District Recreation Officer

Los Angeles River Ranger District

Angeles National Forest

Phone: 818 899-1900 Ext 229

Fax: 818 896-6727

Email: dcmerkel@fs.fed.us

VOLUNTEERS NEEDED

**Don't like seeing trash and graffiti?
Then Volunteer with Blight Busters Trail Crew
On April 26th**



VOLUNTEER FUND RAISER

**The nonprofit Southern California Mountains Foundation presents SEASON 9!
@ Big Bear Discovery Center Amphitheater stage**

Introducing "World's Greatest Tribute Bands"

**All of our tribute shows have been seen on national AXS TV and
proudly voted by their fans as World's Greatest!**

And, we're pleased to announce new food and sound!!

Only the best for our guests!

Buy your tickets NOW for the 2014 season:

- **June 28th Co-Headliners**
Kenny Cetera's Chicago Experience
The Long Run, Experience the Eagles
- **July 19th DSB, America's Greatest Tribute to Journey,**
with special guest, The PettyBreakers.
America's #1 Tribute to Tom Petty and Heartbreakers
- **August 30th Led ZepAgain, A Tribute to Led Zeppelin,**
with special guest, Lighthouse Strings Orchestra
directed by Sharon Rizzo ~ all local Big Bear Students

Contact: Kathy Clapsaddle, event producer
805.750.2506

kclapsaddle@mountainsfoundation.org



THE CITY OF GLENDALE
Community Services & Parks Department

“Just 4 Kids”

◆ WHEN:

Sat. April 5, 2014
9:00 a.m. - 12:00 p.m.

◆ WHERE:

**Deukmejian Wilderness
Park**

3429 Markridge Rd
Glendale, CA 91214

◆ WHAT:

**Snacks and drinks will
be provided**

**Wear sturdy shoes and
protective clothing**
**Bring water, sun
screen, and a hat**

◆ WANT MORE:

Call (818) 548-3795

**This program is “Just 4 Kids” as we
present a morning of Nature Crafts,
Outdoor Play, Owl Pellet Dissection,
and an Interpretive Hike.**

**We are looking for kids between the
ages of 6 years old and 12 years
old to join the fun.**

**This program is free, but you must
R.S.V.P. by calling (818) 548-3795.**

**If you have siblings that wish to
attend but do not meet the age
range please give us a call. Parents
and guardians are encouraged to
stay during the event.**

**This will be an entertaining and
educational extravaganza of epic
and enormous elements (that
means it will be lots of fun for all
that attend).**

Հայերեն տեղեկությունների համար զանգահարել

հեռոնյալ հեռախոսահամարով (818) 548-2000

Para información en español, llame a (818) 548-2000

Sponsored By:

**GLENDALE PARKS &
OPEN SPACE
FOUNDATION**



**REASONABLE ACCOMMODATIONS WILL BE MADE UPON REQUEST.
PLEASE NOTIFY US WITHIN 72 HRS PRIOR TO EVENT DATE.**



Thurman Couch and Dave Baumgartner doing tread work t George's Gap

How do you remove a 40 inch fallen tree off the trail?

A BSA Trail Crew, augmented by interested volunteers, was organized to perform this task. The complete crew performing the work was comprised of David Behenna, Alan Coles, David Ledford (LARRD Vol. 125), Dennis Merkel, Dick Rose, Kent Schwitkis, Mark Subbotin, John Syzdek, Tom Thorp, and Neide Torres.

Tom Thorp has uploaded the photos and videos he took of the work to the BSA Los Angeles Area Council High Adventure Team website at:

<http://www.laac-hat.org/tree/>

The final video (P1090317) is a nice demonstration of gravity moving a 3 ton obstruction off the trail in about 3 seconds.



VOLUNTEERS AT WORK



Volunteers Thurman & Cirena at George's Gap

Another section of George's gap trail fixed by Volunteers!



Volunteers Mitch and Mark are trying to stop hikers from making short cuts and ruining the Lower Sam Merrill trail with fences. In the area that is circled were plants at the end of the installed fence. The plants are now gone and the short cutters have found a new way of ruining the trail.

Angeles Mountain Bikers and Trail Keepers

Mark Gage mr33@hotmail.com

- Trail Maintenance- "Gardening by the Mile not the Yard."....
Hikers and Bikers working together on trails. We work on the trails almost every Saturday. Our focus trails are Lower Sam Merrill, Castle Canyon and Echo Mt. Trails.

Angeles Mountain Bike Patrol

m.rmeguire@hotmail.com

Our mission is to provide educational and a responsible image to all trail users. To encourage rider's to obey forest regulations and working to preserve and protect trails. A.M.B.P is here to serve and inform the public.

Angeles 50k ANGELESFOREST50.COM

Eric LeClair, Director

Formerly Mt Disappointment 50K Conservation Group

The new schedule will be release soon.

ANGELES NATIONAL FOREST FIRE LOOKOUT ASSOCIATION

<http://www.anffla.org>

Pam Morey pammorey@fs.fed.us

Forest Care Program Coordinator

909-744-9510 ext. 125



- Training schedule is now out, see page 3
- **BECOME A FIRE LOOKOUT!** It's probably easier that you realize to become an active Fire Lookout with the ANFFLA. It just takes a few classes training (which are quite fun!) and the desire to spend some time in the Angeles National Forest. For more information about becoming a fire lookout pammorey@fs.fed.us or 909-744-9510 ext. 125
- Help rebuild Vetter Mtn Fire Lookout with a purchase of a reusable tote bag for \$5.
- Help support ANFFLA every time you shop!
Register your Ralphs Club Card and your Food4Less card and ANFFLA will receive a donation every time you shop. It's an easy to help support our efforts and costs you nothing!

Antelope Valley Conservancy

www.avconservancy.org

avconservancy@yahoo.com Face book: Antelope Valley Conservancy

PHONE (661) 943-9000

- Looking for a sustainable gift? Consider giving a Membership in Antelope Valley Conservancy. Only \$25. A gift that keeps on giving.
- If you use Google or any other search engine, please try GoodSearch.com to help us build the Sustaining Endowment. Just type "av conservancy" as your charity and Yahoo donates a penny for each search- at no cost to you! Do it now, so you don't forget. Thank you!

Arroyos and Foothills Conservancy<http://www.arroyosfoothills.org/>**John Howell, (626) 796-0782 johnrhowell@earthlink.net**

Face book: Arroyos & Foothills Conservancy

- **Apr 12th Rosemont Preserve Restoration Day**
- **Apr 20th Rosemont Preserve Open Gate**
- **Cottonwood Campaign is heating up!**

We are excited to announce that the Santa Monica Mountains Conservancy has offered a 2-1 match to help fund a portion of our Cottonwood project. For every \$1 you donate, SMMC will match it with \$2 until our combined total reaches \$25,000, enabling us to complete a critical biological survey needed to obtain government funding. This is a fantastic opportunity to help save Cottonwood Canyon

Go to: <http://www.arroyosfoothills.org/cottonwood/> to take advantage of this opportunity and learn more about Cottonwood Canyon.

Audubon Center at Debs Park**4700 North Griffin Ave. Los Angeles, CA 90031****PHONE: (323) 221-2255****Contact :** http://debspark.audubon.org/email/1617/field_location_email**Calendar:** <http://debspark.audubon.org/events>

- **Apr 7th/14th/21st/28th Free Tai Chi Class/ Class Gratis de Tai Chi**

Giving just a little bit of your time can make a big difference to the success of the Audubon Center at Debs Park. We offer many opportunities to help us bring people together to appreciate, enjoy, and protect birds and nature.

BEAR CANYON TRAIL CREW

- **Apr 19th Outing** Temp. 60° (avg.) 15th-20th Showers, then sunny, warm

There is plenty to be done for these first few months as we fix what has deteriorated over the summer on this heavily used trail. There is easy work to be done with loppers and trimmers and more serious tread repairs to perform as well. In addition, we will be joined by a chainsaw crew and they can always use some swampers to clear what they've cut. I have plenty of McCleods, shovels, and pick-mattoxes for the heavy work and a few saws, loppers and trimmers for the smaller work. However, if you have your own tools feel free to bring them.

Link to subscribe to Bear Canyon List: http://eepurl.com/ID_Rr

Bear Canyon Trail Maintenance 2013-2014 Schedule With Old Farmer's Almanac Weather Prediction

- **May 17th Outing** Temp. 66° (2° above avg.) 11th-19th Sunny, warm inland
- **Jun 14th Outing** Temp. 68° (avg.) 13th-17th Sunny inland

Big Santa Anita Canyon<http://www.bigsantaanitacanyon.com/>

- **Open Year round, 6 am to 8 pm every day.**
- **The road is gated and the gate is locked at night.**

Be sure to return to your car before 7:30 pm or you may not get out! During and after heavy rains, fires, or after significant earthquakes, and during fire alerts the road may be closed.

• **The Sierra Madre Police Dept. is in charge of locking/unlocking the gate. If you are concerned that the road might be closed you can call them for info: 626 355-1414.**

- **Adams Pack Station Contact:**

Friday, Saturday & Sunday 8:00 am - 5:00 pm (626) 447-7356

Boy Scouts of America Los Angeles Area Council

VOLUNTEER GROUP NEWS

<http://www.laac-hat.org/>

- April 12th CA Trails Day (refer to page 11)
- Apr 26th 27th Trail Boss (refer to page 9)
- May 3rd 4th Trail Boss (refer to page 9)

Blight Busters Trail Crew

Danny Treadway

dayhiker86@yahoo.com Echo

- Apr 26th Echo Mountain cleanup

Echo Mountain and the trail leading up from Lake Ave. needs some much needed attention. There is graffiti on top along with some trash that needs to be removed from the mountain.

We will be driving up on a closed road that will get us to within 3/4 of a mile of Echo. We will be locking the gate on the road behind us. Anyone with time issues shouldn't sign up because you will have no way out until we all leave as a group. That being said, we should be wrapping things up around 1pm.

Meeting Location: We will be meeting at Farnsworth Park just off of Lake Ave, in Altadena at 8am.

From the 210 FWY. in Pasadena, exit Lake Ave. Drive north towards the mountains. The park will be on the left side of Lake Ave. as you drive up.

We will be meeting in the first parking lot on Mount Curve Ave.

L A County Farnsworth Park 568 East Mount Curve Avenue, Altadena, CA.

Bring the usual, clothing that you don't mind getting paint on. Water and a snack.

Nothing else is needed. All equipment will be provided. Hiking distances should be no more than 1.5 miles roundtrip

California Trail Users Coalition (CTUC)

<http://www.ctuc.info/ctuc/>

- Apr 16th MEETING Come and Join Us CTUC meets on the 3rd Wednesday of every month at 5:00 p.m. at 3550 Foothill Blvd., Glendale, CA.

Our meetings are open to everyone who wishes to participate. Volunteers have a great time working together on these types of projects. To volunteer on one of our projects, please join us by calling our Chairman, Terry Kaiser at 818-353-4682. You may also email: edwaldheim@aol.com

- CTUC MAPS The first map in our series was completed in 2005 and now, several years later, there are eight maps in print with as many as four more in the works. CTUC maps are unique in that they are not complete inventories of routes. Instead they are travel guides to the area with selected routes shown.

For more information: <http://www.ctuc.info/ctuc/index.php/maps>

CITY OF GLENDALE Parks, Recreation & Community Services Dept

<http://www.ci.glendale.ca.us/parks/default.aspx> 818-548-2000

- Apr 12th Just 4 Kids

Location: Verdugo Skate Park

Time: 11:00 a.m. - 8:00 p.m.

Contests: Game of Skate, Snake-run Speed Trials, and Best Bowl Trick. Free to enter.

Signup starts at 11am on day of event. First contest starts at 12 noon.

Live Music: Music provided by Victory Music Academy with help from Sound Bites Studios

Dianne Erskine Hellrigel email: zuliebear@aol.com

• **Apr 5th - -Bear Creek Tail from Hwy 39 to Bear Creek**

Today we will be hiking a beautiful single track trail with a 1,000 ft gain from Hwy 38 to Smith Mountain Saddle. From the saddle to the summit is another 950' gain in ½ mile. From the summit there is a stunning 360 degree panorama view of the heart of the San Gabriel Mountains. If you wish to pass on climbing to the summit, you can rest at the saddle and wait for the group to return. From the saddle we drop 1800' into the beautiful Bear Creek Canyon where we will enjoy our lunch next to a year-round stream. As we rest, Dave will show you a 40' waterfall and we will also explore a short distance up Bear Creek. Our total distance is 12-13 miles, with a total gain of 3,000 feet, plus an additional 850' (optional) climb to the summit. Note: There is a significant amount of poison oak in Bear Creek. Please wear long sleeves and pants, and be able to recognize poison oak so you can avoid it.

Directions: From Interstate 210 in Azusa, take Azusa Avenue (Hwy 39) north about 12 miles to the junction at East Fork Road. Continue straight on Hwy 39 and drive 6.2 miles to the parking area along the left side of the road (1/4 mile short of Coldbrook Campground).

Meet at the trailhead at 08:00AM. Adventure Pass is required to park and restrooms are available.

Carpool information: Meet at Towsley Canyon front parking area between 06:30-6:45AM.

Arrangements will be made at that time.

Rated: Difficult/Strenuous but slow paced **Leader:** Dave

• **Apr 6th, Apr 13th, -Dagger Flats Trail Work-**

As part of the 50 year Wilderness Act Celebration this year, we will be restoring a trail that has been unused for about 30 years. We will be hiking this trail on September 6, following the actual anniversary of the passage of the bill on September 3. I can only take 10 people per date, so please RSVP to Dianne (_zuliebear@aol.com) (mailto:zuliebear@aol.com) as soon as possible.

Directions and location (near Sand Canyon) will be emailed back to you.)

Time 7:30 meeting time to 12:00 or 2:00, determined by the respondents. This will also include some hiking!

Bring water, snacks/lunch, camera, band aids, TP (there are no bathrooms), hand wipes, garden gloves, sunscreen, and a hat. Thank you for being a part of this historical event! We will be having a ribbon cutting ceremony when we're finished. I'd love for you all to be a part of it!

• **Apr 12th - Weldon to East Canyon**

This is a 9 mile trail with about 1500' gain. It should be loaded with wildflowers in March, so bring your camera. There will be Winter Vetch, Curly Dock, California Poppies, Datura, Phacelia, and much more. Bring lots of water, lunch, and your camera. Meet at the base of East Canyon at 8:00. We will leave most of the cars and this location, and carpool to the Weldon Canyon Trail head, just up the road. If you wish to make this an easier hike (6 miles), you can leave the trail and go down East Canyon while the remainder of the group heads up to the monument on top of East/O'Melveny. This will add the additional 3 miles to the route. This is a good place to relax and have a snack or lunch before returning to the bottom of East Canyon. There are also great views from this vantage point!

Directions to East Canyon: Exit the I-5 freeway at Calgrove. Turn west. Follow Calgrove around a curve and through a signal. You will now be on The Old Road. Pass Towsley Cyn. Pass the Post office. Pass the Church of the Nazarene. Immediately after passing the Church of the Nazarene, park along the side of the road, on the right. This is where we will meet. Some cars will remain here, and others will carpool the hikers to Weldon Canyon, just up the road.

Bring: Lunch, snacks, water, poles if you have them, a camera if you have one. **Rated:** Moderate **Leader:** (Steve)

• **Apr 19th - Placerita to East Walker Ranch**

We will meet at Placerita Canyon Nature Center near the steps to the building, and proceed down the Canyon Trail which is a very easy jaunt with almost no gain. This portion is perfect for easy hikers. This portion will be 4 miles RT with only 1 short hill. Once we've reached Walker Ranch, the Easy hikers can return to Placerita Nature Center on their own, or venture out to the waterfall, which would add another 1 mile RT to their total. Moderate + hikers will head over to East Walker Ranch and will add another 4 miles to their trek, bringing the total to 9 miles. This segment is more difficult with 4 significant (but not THAT hard) hills to conquer. After we finish up at Walker Ranch, you can return to Placerita Nature Center with your leader, or you can venture around Golden Valley to add up to 6 more miles to your trek.

Meet at Placerita Nature Center at 8:00.

Rated: Easy (first segment) and Moderate (entire route) **Leader:** Dianne

• **Apr 25th--27th -Bicycle/Backpack Trip to the Angeles National Forest Park At Red Box Ranger Station on Angeles Crest Highway/ Adventure Pass Required**

We will Ride Bicycles (Full Pack!) down a fire road 5 Miles from Red Box Ranger Station to West Fork Campground. From West Fork we will be Backpacking 1.5 Miles down the West Fork of the San Gabriel River to Devore Camp Ground. Richard will haul bicycles to Red Box in his truck.

This is a High Adventure Trip to the beautiful San Gabriel River. Mr. Bear, Mr. Deer, Mr. Rattlesnake and Mr. Rainbow Trout are only a few of the Natives that live in this riparian environment. You must RSVP for this trip to zuliebear@aol.com. You will be sent meeting information upon receipt of your RSVP.

Rated: Moderate++ **Leader:** Richard

• **Apr 26th -Bear Divide-Across Santa Clarita Canyons to Elsmere Canyon**

This is a new route for us. We've done all of these hikes separately, but we've added a new overland route across a non-trail that will be put into use in the near future. The route is through grassland, so you will not be scrambling through difficult chaparral. However, high top boots are recommended, and if you have gaiters, this is a good time to put them to use. This hike has about 2500 feet of gain and is rated difficult. However, easy and moderate hikers can carpool to the trail head with us, do the first part of the hike, then turn around at Wilson Saddle, and return back to their cars at Bear Divide. So, this is a one size fits all hike! Both versions have spectacular views. The hike is 11+ miles and a real calorie burner.

MEET at the Park and Ride at Whitney/Elsmere Canyons at 8:00 AM. We will leave most of the vehicles here and we will carpool to the trailhead at Bear Divide. Those individuals wanting to cut their hike short should volunteer to drive others to the trail head.

Directions to meeting point: From Valencia, head south on the I-5. Then take the SR-14 to the first exit, Newhall Avenue. Exit. Take the right exit when the exit divides. Turn right at the stop sign. Park. Meet in this park and ride.

Rated: Difficult (Moderate and easy for the shorter version) **Leader:** Dianne

Concerned Off-Road Bicyclists Association (CORBA)

VOLUNTEER GROUP NEWS

PHONE: (818) 773-3555

FACE BOOK: <http://www.facebook.com/CORBAMTB>

<http://corbamtb.com/>

For schedule goto: <http://corbamtb.com/Calendar/index.shtml>

• **Apr 7th COSTAC Monthly Meeting** The Conejo Open Space Trails Advisory Council meets the first Monday of the month to discuss Conejo Open Space Conservation Agency trails issue. The public is welcome to attend. **For more information, contact Nicole Tindell, 805-495-0545.**

• **Apr 28th Monthly CORBA Board of Directors meeting. All are welcome**

The Concerned Off-Road Bicyclists Association (CORBA) is an all-volunteer non-profit organization serving the mountain bicycling community of Los Angeles and its surrounding areas including southern Ventura County. We are dedicated to preserving open space, maintaining public access to public lands, and creating more trail opportunities for all to enjoy. We are a chapter of the International Mountain Bicycling Association.

Crescenta Valley Trail Crew aka CV Trail Crew

Karen Buehler 818-363-6216

karen.buehler2@gmail.com

Face book: <http://www.facebook.com/#!/cvtrail.crew>

• **Apr 4th/11th/18th/25th Trail Restoration**

7:00 AM to 12:00 PM -Deukmejian WP (Meet in the Dirt parking)

• **April 19th 8:00 am to 12:00 pm - Wilderness Work Day**

including trail maintenance at Deukmejian WP 8:00 am to 12:00 pm

HABITAT WORKS

<http://www.habitatwork.org>

Kim Clark or Tom Persons 818-353-4653

For more information call or e-mail to: wildlife@habitatwork.org

• **Apr. 5th /6th Stream Stewardship Backpack**
Los Padres National Forest

- **Apr. 10th Microtrash Collecting on the Angeles National Forest**
- **Apr. 12th Microtrash Collecting on the Angeles National Forest**
- **Apr. 13th Microtrash Collecting on the Angeles National Forest**
- **Apr. 19th Microtrash Collecting on the Angeles National Forest**
- **Apr. 20th Microtrash Collecting on the Angeles National Forest**

- **Apr. 26th /27th Wildland Stewardship in Rock Art Country**
Sierra Madre Ridge, Los Padres National Forest

www.haramokngna.org 663-449-8975.

• **Volunteers** As a cultural, environmental and arts organization, Haramokngna American Indian Cultural Center shares the flavor of Native American history, culture, traditions and arts with the Los Angeles community. We are always looking for energetic individuals ready to represent the Cultural Center during special events and regular office hours.

• **Check the Pukuu's Amazon Store** <http://astore.amazon.com/pukucultcomms-20>
When you order items thru our store, a percentage is donated to our center. THANK-YOU

JPL TRAILBUILDERS

Kathie Reilly 818-354-8321 (JPL)

Jack Russell 562-861-3187

• **Apr 12th California Trails Day**

WHAT'S HAPPENING: **California Trails Day** For carpooling, meet at 7:00am at ball diamonds parking lot in the lower part of Hahamongna Park. Get off the 210 freeway at the Berkshire off-ramp and follow the signs for JPL and Hahamongna Park. Once you turn into the park, go down the driveway, make a right at the bottom and look for us in the parking lot by the ball diamonds. (If that is full, we park in the dirt lot directly at the bottom of the driveway) We will sign in and form carpools, leaving at 7:10am sharp,. The leaders take passengers, but make sure you have plenty of gas in case we need more drivers (riders can give drivers \$1 towards gas).

High Country Riders

Forest wide equestrian volunteer group that packs

Equipment, Material and Supplies etc. to your Trail or worksite. Packs Trash & Rubbish out of the Forest.

Contacts: Jonathan Schultz 951-830-3400 maujds@earthlink.net

- Forest Certified Animal Packer,
- Master Teacher for "LNT",
- "C" Crosscut Saw Certifier
- Chainsaw "B" faller

Glen Foster 760-949-3497 or 760-508-0344 pjgwfoster@aol.com

Certified Packer

(404) 413-5484

<http://www.mtwilson.edu/>

• **Visit Mount Wilson**

• **April 1st** The Observatory will reopen to the public daily from 10 am to 5 pm,

• **April 5th Cosmic Cafe opens.** The Cosmic Cafe and our weekend 1 pm guided tour program will be open Saturday through Sunday, 10 am until 5 pm. The Cosmic Cafe will once again offer food, drink, souvenirs, and a stimulating visit to Mount Wilson throughout the season. You can still arrange for a Special Tour of the Observatory for any day of the week, not just weekends.

Support Mount Wilson Observatory

We Need Your Help - Mount Wilson Observatory is privately owned and receives no continuing state or federal support. You can help ensure the continued operation of this science heritage.

- **Join** our Friends of Mount Wilson Observatory organization to receive a variety of member benefits and stay informed on the latest scientific and other activities from the mountain.
- **Contribute** to our Second Century Campaign. As Mount Wilson continues into its second century, a capital campaign is being developed to preserve this great observatory for future generations.
- **Be a Docent Tour Guide** - We welcome applications from individuals interested in participating as docents in our very active guided tour programs.

For application information go to: <http://www.mtwilson.edu/docents.php>.

Mount Wilson Bicycling Association

<http://mwba.org/> @ on Facebook

Working regularly on trails in the Altadena vicinity, especially Sunset Trail and El Prieto Trail.

- **April 20th 8:00 am - 1:00 pm,**
We'll continue to work on Middle Merrill unless another need arises.
Contact: Mitch Marich, info@mwba.org

Mount Wilson Race

<http://www.mountwilsontrailrace.com/HOME.html>

- **April 13th Outing**
- **May 11th Outing**

Workers needed to groom the Mt. Wilson Trail in preparation for the Mt. Wilson Trail Race on Saturday, May 24.

We meet at 8:00 A.M. below the trailhead at Lizzie's Trail Inn at the intersection of Mira Monte and Mt. Wilson Trail Road. We will be off the mountain by noon each day.

Bring gloves, sunshade and water; we will provide the tools.

You must email Race Chair Pete Siberell (psiberell@santaanita.com) in advance we put out enough tools. **Call Pete Siberell** (626-574-6373) with any questions.

SAN GABRIEL TRAILBUILDERS

<http://www.sgmtrailbuilders.org>

Ben White: 626-303-1078

ben@sgmtrailbuilders.org

We work on the first, third, and fifth Saturday of each month Trail working volunteers may join the San Gabriel Mountains Trail Builders in the continued restoration process for trails in and around Crystal Lake, East Fork, Heaton Flats, Upper & Lower Bear Creek, the Baldy Area and many other locations on the Angeles National Forest.

Learn how to use all the Trail tools to work the trails. Help you learn how to get your certificates for Chainsaw and Crosscut Saws use on the National forest.

If you would like to volunteer your time, please send e-mail to feedback@crystallake.name I will let you know when, where, and what you need to know to join us.

MEETING LOCATION :

San Gabriel Canyon Gateway Center,
1950 North San Gabriel Canyon @ 7:30 am

SCENIC MT. LOWE RAILWAY

<http://www.mtlowe.co>

Brian Marcroft

562-868-8919

E-mail: Emworks@verizon.net

Sierra Club

www.angeles.sierraclub.org/pasadena/

Angeles Chapter Office

3435 Wilshire Blvd. #660, Los Angeles, CA. 90010-1904

213-387-4287

For more calendar details go to http://www.angeles.sierraclub.org/pasadena/outings_3mos.html#Apr

• Apr 2nd 7:00 PM

Pasadena Group Monthly Meeting: Bill Neill, a charter member of the California Invasive Plant Council and executive of Riparian Repairs, presents a program "**The Challenge of controlling Invasive Wildland Weeds in Southern California.**" Invasive weeds are one of the greatest threats to our state's native flora and fauna, to free-flowing streams, and to floodplain water retention. Bill, who has three decades of experience in the control of invasive weeds throughout Southern California, will focus his presentation on five major invasive species, illustrating environmental threats and specific control methods. He will also discuss some of the political and stakeholder issues involved in his work, and offer inspiring examples of successful habitat restorations. Information on Group's hikes, outings, and conservation activities. Newcomers always welcome. Doors open at 7 pm, program at 7:15 pm at Eaton Canyon Nature Center, 1750 N Altadena Dr in NE Pasadena. For information contact Group Membership Chair, Elizabeth Pomeroy

• Apr 3rd/10th/24th **Henninger Flats Conditioning Hike**

• Apr 5th **Introductory Botany Walk**

• Apr 5th/23rd **Evenings in the Arroyo**

• Apr 12th **Greene and Greene Southeast Pasadena Walking Tour**

• Apr 13th **Trail Canyon Falls**

• Apr 18th **Muir Pk (4688') Rendezvous Hike from Sunset Ridge**

• Apr 18th **Muir Pk (4688') Rendezvous Hike from Eaton Saddle**

• Apr 26th **Middle Hawkins, (8505'), S. Mt Hawkins (7783'):**

• Apr 27th **Chilao to Mt Hillyer.**

Pacific Crest Trail Association <http://www.pcta.org>

FACE BOOK: <http://www.facebook.com/#!/PCTAFan>

Liz Bergeron lbergeron@pcta.org

Sacramento, CA Phone: (916) 285-1846 x 2

• April 12th **Annual Meeting**

• April 25th/26th **ADZPCTKO**

• Jan 1st - Dec 30th. **'Fannypack' Projects [FALC]. SBNF, ANF, CNF, and BLM.**

Swat teams to inventory trail, clear trees and boulders, and repair slides on short notice.

Open to qualified volunteers.

Contact: Pete Fish, Email: pickaxepete@sbcglobal.net, Tel.: 805-658-6540

or: John Hachey Email: goaliejhachey@msn.com, Tel.: 909-605-3219

SOUTHERN CALIFORNIA MOUNTAINS FOUNDATION

<http://mountainsfoundation.org/>

Sarah Miggins smiggins@fs.fed.us 909-382-2796

602 South Tippecanoe, San Bernardino, California 92408

For more calendar details go to <http://mountainsfoundation.org/calendar>

- Baldwin Lake Ecological Reserve Apr 5th/12th/19th/20th

- Story Time Apr 5th/19th

- Earth Day ~ April 19 Big Bear Discovery Center

Makes a SPLASH at Earth Day, sponsored by Arrowhead Mountain Spring Water

VOLUNTEER GROUP NEWS

Tree People <http://www.treepeople.org>

FACEBOOK: TreePeople

12601 Mulholland Drive

Beverly Hills, CA 90210 Telephone (818) 753-4600

For more calendar details go to: <http://www.treepeople.org/calendar/2014-04>

Over the course of a week, we finally got some real rain. In fact, it was by far the most rain the greater L.A. area has seen since December 2010! Great news, indeed.

But was it enough to make a difference for our city and our trees in this awful drought?

Here at TreePeople, thanks to our underground rainwater cistern, the answer is yes: the rain helped alleviate the drought a lot. That's because we were able to capture a whopping 81,000 gallons of water from the rooftops and parking lot at our headquarters!

That's 81,000 gallons of water we prevented from running off into the ocean, carrying trash and pollutants. That's 81,000 gallons of water we don't need to take from strained supplies of Northern California or the Colorado River. That's 81,000 gallons of water that can see us well into — if not all the way through — the dry summer months, as we drip-irrigate the native plants on our one acre of landscaping.

Imagine if ALL of Los Angeles started capturing rainwater? Now that would be a huge step towards water security.

- Drought Response Park Tree Care Apr 6th/12th/19th

- Campus Planting Apr 26th

- Moonlight Hike Apr 18th

- Park Work Day Apr 3rd/17th/24th

- Santa Monica Mountains Restoration Apr 5th/12th/13th/26th/27th

Volunteers of the Angeles National Forest

Wrightwood, CA <http://www.grassyhollow.net>

Visitor Center Phone #: (626) 821-6737 Loren Lake lorenll@verizon.net

- The Grassy Hollow Visitor Center and Grounds are open for day-use only

Hours: Saturdays, Sundays and Holidays 10:00 am to 4:00 pm

Weekdays- for school groups, youth organizations, etc. By Appointment

William S Hart UHSD of Santa Clarita ANF Crew 135

Kevin Sarkissian

661.250.0022 X 552

ksarkiss@hartdistrict.org

www.hartrop.com/forestry



Los Angeles River Ranger District
12371 North Little Tujunga Canyon Road
San Fernando, CA 91342

TUNDRA by Chad Carpenter, Los Angeles Times Oct 25, 2010 email: info@tundracomics.com



Volunteer Today
Send this in Right Away to
Dennis Merkel —12371 N. Little Tujunga Canyon Rd
San Fernando, CA 91342

Name _____
Address _____

Phone # (hm) _____
e-mail _____

Interests
Indicate what you would like to do. Circle area or enter your interests.
Campground Host/ Visitor Information/ Smokey Bear - Fire Prevention/
Recreation Aid / Forest Patrol /Resource Management / Computers/
Research-Librarian / Office Clerical / Tour guide/ Fire Lookout/
Conservation Education / habitat restoration and tree planting
Other: _____