

# VOLUNTEER TODAY

Dedicate Yourself to Caring for the Land and Serving the People

<http://www.fs.fed.us/r5/angeles/volunteering/>

## Los Angeles River Ranger District Volunteer Newsletter Feb 2014

Dear Angeles Volunteers:

I'd like to pass on to you the following message from Randy Moore, who is the Regional Forester of the Pacific Southwest Region of the Forest Service:



**“The Volunteers & Services Program has rapidly become one of our most important Programs in the Agency at present and in the history of the U.S. Forest Service. The contributions that our numerous volunteers are providing this Region are continuing to help us accomplish the strategic goals we have in place with ecological restoration and ensuring a healthy workforce and workplace.”**

I want to echo Randy's words regarding the importance of what you do. I also want to thank and encourage you as you faithfully record and report your hours of service. Having accurate information about the work that our great volunteers are accomplishing is critical to the Forest Service mission.

We have completed our year-end tally of volunteer hours for 2013, and are extremely pleased to see that – for the second consecutive year – you have contributed more than 75,000 hours of service, valued at nearly \$1.7 million. This is incredible!

Thanks so much for all you do!

Kathy

Kathy Peterson  
Volunteer/Partnership Program Consultant  
Angeles National Forest

**Do not regret growing older,  
It is a privilege denied to many**

Electronic copy of Newsletter at:  
<http://www.mtlowe.co/VolunteerNews.htm>

In The Los Angeles Times .....pg 2  
Los Angeles Times Flash Forward .....pg 2  
BE ON THE LOOKOUT!.....pg 2  
January LAARD Meeting  
Minutes?.....pg 3-4  
How dry is Los Angeles.....pg 4  
The Campaign Hat.....pg 5-6  
Volunteers Needed.....pg 7-8  
Volunteer training.....pg 9  
Volunteers At Work.....pg 10-14  
Volunteer group news .....pg 15-25

Oct 13 1897

## MOUNT LOWE RAILWAY

### Foreclosure Suit on Trail Before Judge Van Dyke

IN THE LA TIMES

The foreclosure suit brought by the Los Angeles Safe Deposit Company against the Pasadena and Mt. Lowe Railway Company came up for trial before Judge Van Dyke yesterday, and will be resumed today.

The evidence presented was principally of a documentary nature, tending to establish the grounds upon which the proceeding were based.

The railway company issued bonds to the amount of \$500,000, giving to the Los Angeles Safe Deposit and Trust Company a trust deed to all its property, including rights-of-way, rolling stock, hotel property, etc. The railway company defaulted in the interest upon its bonds, resulting in the present action.

It is understood, upon the authority of J.W. McKinley, Esq., associate counsel for the railway company, that no defense will be made. It is stated however, that H.M. Brownback, one of the judgment creditors, will make a contest which may delay the final settlement of matters.

A.R. Metcalf, Esq., and A. Anderson, Esq., represent the Los Angeles Safe Deposit Company. McKinley & Graff appearing for the defendants.

A long list of judgment creditors is represented by counsel in the pending suit. Among them are Blake, Moffitt & Tone, J.B.Brill Co., Howland & Chadwick, the Studebaker Manufacturing Company, Craig, Stuart & Co., the General Electric Company, Torrance et al., the Westinghouse Manufacturing Company and H.M. Brawnback, intervenors.

## IN THE LOS ANGELES TIMES FLASH FORWARD!

The Mt. Lowe railway opened on July 4, 1893 and was met with quick interest and success. For the seven years during which Lowe owned and operated the railway, it constantly ran into hard times. The railroad was placed into a foreclosure sale on March 28 1899. The \$500,000 bonds were equal to about \$11,480,050 in 2013 dollars

## BE ON THE LOOK OUT!

**I'd like to get all missing/damaged trail signage fixed. Anytime you are out in the forest and notice missing/damaged trail signs, or locations where signage is needed, please let me know by either emailing or calling me. Thanks.**

Dennis Merkel, CPRP, FPO  
District Recreation Officer  
Los Angeles River Ranger District  
Angeles National Forest  
**Phone:** 818 899-1900 Ext 229  
**Fax:** 818 896-6727  
**Email:** dcmerkel@fs.fed.us



# Minutes of Bi-Monthly LAARD Volunteer Meeting January 15, 2014

## By Kathie Reilly

### Organization Reports:

- California Trail Users Coalition (CTUC), Robin and Mike: 15 people discussed grants. They will be meeting here on Jan 28 at 1 pm with the Supervisor.
- Angeles Mountain Bikers and Trail Keepers, Mark: 3 projects to do on Lower Merrill. Getting to be more of a challenge now that it is being used by a gang
- Angeles Mountain Bike Patrol (CORBA), Robin and Mike: inspected trail to Mt Hoyt, asked if anyone working it from Clear Creek, or the World of Chaparral from Georges' Gap. No one.
- JPL Trailbuilders, Kathie: Finished Dark Canyon Trail from Angeles Crest to Grizzly Flats road. Asked if anyone working that trail since they left a lot of berm, no one. Next project back to Mt Lowe West maintenance.
- Angeles National Forest Fire Lookout Association: absent
- Arroyo Seco Canyon, Patty and Tom: continue cleaning the canyon. Very little water, even at Paul Little campground
- Mt Disappointment 50 k: absent, Hal reported Gary was hospitalized over the holidays. The 50k race has been cancelled this year, Gary is trying to organize a marathon instead.
- Terry Tanner: absent
- Scenic Mt Lowe Committee, Brian: another successful annual excursion up Mt Lowe, one of the best ever. Mt Lowe fire road is cleared from granite gate to campground by group of scouts.
- Boy Scouts of America, David: Gabrielino Trail from Red Box to Valley Forge in pretty good shape. Also helped in Bear Canyon. Eagle Project will work Gabrielino between Valley Forge and Kenyon DeVore to fix a big drop off. Other new projects coming up.
- Boy Scouts of America, Verdugo: worked Gabrielino West Fork to DeVore, Valley Forge to junction. Will work Mt Wilson to Valley Forge
- William S. Hart Trails: class starts Jan 27 with 7 kids so far. MRCA land for classroom activities.
- Angeles Crest 100 Mile Endurance Run, Hal: removing poodle dog in Charlton/Chilao area. There are more trees down from last wind storm. Looking for 1-3 people to help this Saturday to remove trees they cut. Fire crew removed down trees on Vetter Road. The Williamson closure August 15 to December limiting rock climbing. A scoping letter went out with comments due by January 24.
- Bear Canyon, Andy: absent, David reported work day on Dec 28, trail to campground in good shape, one huge tree left over trail
- Tree People: absent, Karen reported they are providing training for supervisors. Plan to plant 10,000 trees at Barley Flats, but if there is a drought, cannot plant
- Mounted Horse Patrol, Gene: absent
- Sierra Club, Don: continuing to work Colby Canyon/Strawberry Peak, west and north sides. One outing drove up Josephine road, another started from Colby Ranch. Dead trees keep falling down.
- Mt Wilson Bicycle Assoc (MWBA) Mitch: working Sunset and El Prieto Trails. Will start Mid-Merrill Trail. Asked who to coordinate with for Fern Truck trail which was downgraded from a fire road. Dennis will get him a name.
- MIS Hermanos Pequenitos (My Little Brothers), Andreas: working Big Tujunga Canyon by the dam.
- Chantry Flats, Steven: Spruce Grove supply closet running low. Not too many issues with non-compliance for now.

(cont P4)

## Minutes of Bi-Monthly LAARD Volunteer Meeting (cont)

### USFS, Dennis:

Passed out parking passes and Inter-agency passes. Only need 250 total volunteer hours since 2007 (instead of 500) to qualify for Inter-agency pass.

Someone asked about chain saw training. Non is planned in our district as long as fire fighters are tied up due to the dryness since they do the training. Check with the training center at San Bernardino.

Have a contractor to work Strawberry Peak/Colby Canyon Sutter walls, the last switchback before Potrero, and reroute northern end of Colby.

Last year had 15,000 volunteer hours worth \$350,000!

Passed out Volunteer of the Year form for everyone to submit. Will also email everyone a copy.

CCC is working Gabrielino from Bear Canyon junction south.

Need closed signs at Paul Little to keep people from climbing over the dam to Oak Wilde, very dangerous.

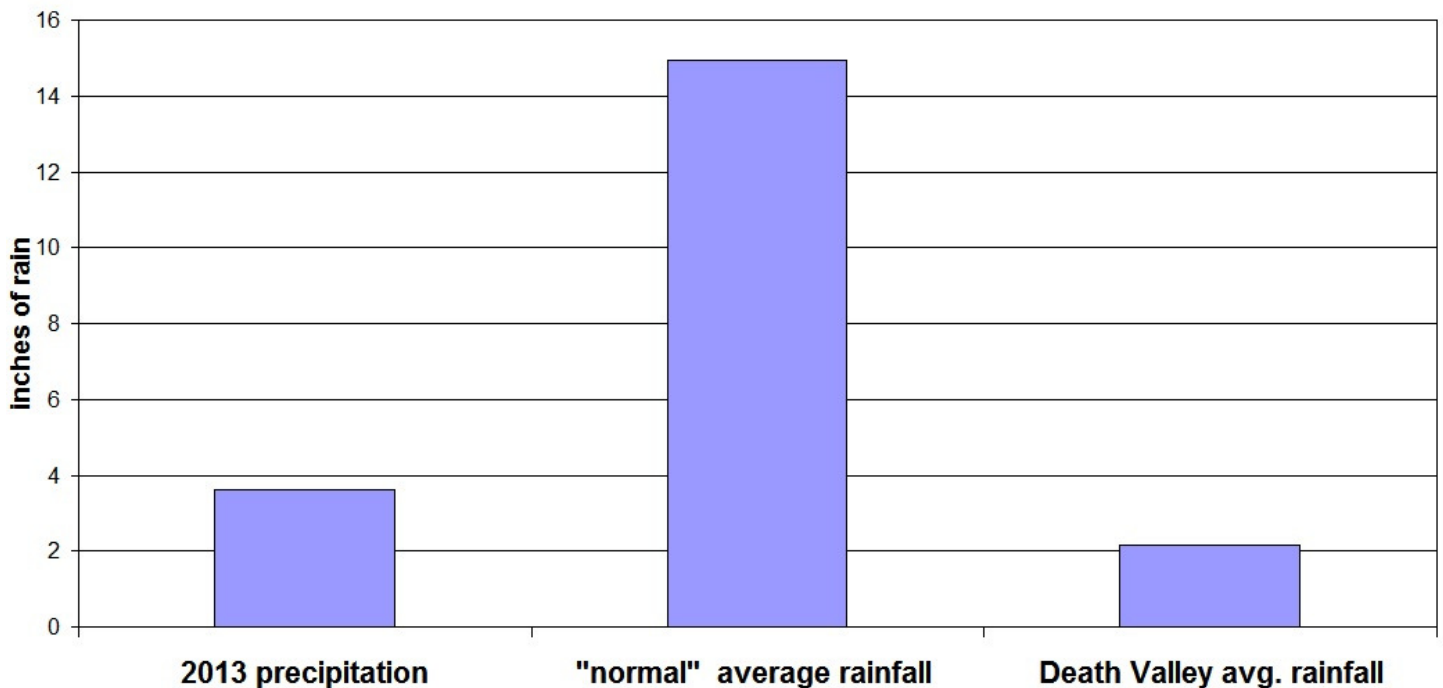
National Forest Conservation grant for LA Conservation Corps to work different areas.

Parking lot out front fills up, park anyway you can since can't have someone out there opening the gate to the back each time someone arrives.

## HOW DRY IS LOS ANGELES

### **QUESTION: "HOW DRY IS LOS ANGELES?"**

**ANSWER: "2013 rainfall totals is slightly more then in Death Valley"**



## The Campaign Hat – Forest/Park Rangers and Smokey Bear



Smokey Bear derives his hat from the traditional campaign hat of Forest and Park Rangers. Campaign hats are still worn by US Forest Service and National Park Service employees. Many states' Fish and Game Wardens, and State Park Police wear campaign hats. Rangers of many local parks departments wear the campaign hat, such as the New York City Urban Park Rangers. Since the federal troops sent to protect the resources of the first national parks were cavalry troopers, including the 9th Cavalry's Black "Buffalo Soldiers," it was natural that forest and park systems and their Rangers would adopt the cavalry soldier's campaign hat as a symbol of authority.



The evolution of the campaign hat can be seen in this 1905 photo of Buffalo Soldiers in Yosemite NP

Although the hat would not become Army standard until 6 years later, some in the photo have re-created their hats into the Montana Peak, probably during their service in Cuba or the Philippines during the 1898 Spanish-American War.

## **The Campaign Hat – Forest/Park Rangers and Smokey Bear (cont)**

The animal logo-mascot of the US Forest Service, Smokey Bear, wears the campaign hat. Smokey's debut poster was released on August 9, 1944, which is considered his birthday. Overseen by the Cooperative Forest Fire Prevention Campaign, the first poster was illustrated by Albert Staehle. In it, Smokey was depicted wearing jeans and a "forest ranger's hat" (a campaign hat), pouring a bucket of water on a campfire. The message underneath reads, "Smokey says – Care will prevent 9 out of 10 forest fires!" (An official real-animal-mascot, a black bear cub named Smokey, was saved from a forest fire in 1950, but of course is not associated with a hat. The cartoon Smokey character precedes him).

The origins of the hat can be traced to the 1840s when army troops posted in the west took to wearing civilian hats which were far more practical than the shakos or kepis then in vogue with most western armies. The name started to be used after the 1872–1876 regulations which introduced a black felt hat — which could be drab after 1883 — for fatigue use derived from the types popularized during the American Civil War. Some were worn with campaign cords mainly a form of decoration.

At least as early as 1893, hats of this type were being re-created into pointed tops, in order to keep off rain, by British South Africa Company scouts in Africa. Three years later in 1896, these scouts introduced the hat to British officer Sir Robert Baden-Powell, who in turn would introduce it to the South African Constabulary and the Boy Scouts. The 1,200 Canadian troops serving under Baden-Powell were the first to wear the campaign hat as a part of their official uniform, and this very likely influenced Baden-Powell's decision to order 10,000 of the hats for the British troops.

A few years later, during the Spanish–American War the standard central crease on the crown was again found to be impractical as it tended to hold the rainwater from the frequent tropical downpours. Many soldiers again reshaped the crown to form a pinched "Montana peak." The army officially adopted the peaked design on 8 September 1911 as "1911 Hat, Service, M1911." Many campaign hats are in evidence among US infantry troops during the Pancho Villa Expedition of 1916.

Through the World War I era, the campaign hat worn by American soldiers was fairly soft. Those worn by the United States Army's general officers had a golden cord around it, whereas other commissioned officers had a golden-and-black campaign cord around their hat. Field clerks, as well as their post-war successors the warrant officers, had a silver-and-black cord, while other ranks had cords in their branch-of-service colors. The United States Marine Corps had the Eagle, Globe, and Anchor badge in black at the front of their campaign hats; its officers had an additional golden-and-scarlet cord around their hat, whereas its other ranks had none.

By the 1930s the felt was made very stiff with a permanently flat brim. Due to the frequent wearing of helmets in France in World War I, most troops received a copy of the French bonnet du police that became known as the overseas cap. In 1942 the campaign hat ceased to be issued generally, but it was still commonly found in the Pacific theatre for much of the war, and was the trademark of General Joseph Stilwell.

# VOLUNTEERS NEEDED

## ARROYOS & FOOTHILLS CONSERVANCY

### NATURAL HABITAT RESTORATION

FIRST SATURDAY OF EACH MONTH, 9-12, MILLARD CANYON, ALTADENA

Join us for important environmental work in the woods of Millard Canyon. Led by our Restoration Specialist Bill Ramseyer. Learn about the ecology of our local foothills. Meet the local animals and actually improve their lives!! Help save the planet... one canyon at a time!!

• February 1<sup>st</sup> • March 1<sup>st</sup>

Meet @ lower Millard fence on Canyon Crest Rd (off Lincoln).

Email Bill: [wmr83@earthlink.net](mailto:wmr83@earthlink.net) for directions, what to wear, and to RSVP.

FUN FUN FUN!!

## Greetings, Angeles National Forest Volunteers!

You are invited to join with TreePeople and the US Forest Service to plant seedlings within fire damaged areas of the Angeles National Forest.

We will be planting Thursdays through Sundays (9:00 a.m. – 1:00 p.m.), until the first weekend in April. The first official day of planting will be Thursday, February 27.

You'll need to pre-register for this event, so that TreePeople can coordinate crew sizes and other planting details. Follow this link to find and register for the planting day(s) that work for you:

<http://www.treepeople.org/calendar/2014-02>

If you are interested in being a crew supervisor, you'll need to register to attend one of the supervisor training sessions being held on February 9 and February 22, from 9:00 a.m. to 1:00 p.m. Click here to register on the date of your choice: <http://www.treepeople.org/calendar/2014-02>

Thanks for your continued help!

Kathy Peterson

Volunteer/Partnership Coordinator

Angeles National Forest

## Gabrielino Trail Help

The Gabrielino Trail from Red Box to West Fork has been worked by volunteer crews in the past and is on the list for future trail work. Bear in mind we have over 375 miles of trails in the Los Angeles River Ranger District alone and the majority were damaged or destroyed by the Station Fire so it will be a long time before all trails are restored to a degree considered adequate. Some of the damage is so extensive that contractors have been hired to help restore the trails and in fact a project will begin on the Strawberry Peak/Colby Canyon Trail the first of next month to restore the washed-out areas. Forest Service partners such as the National Forest Foundation and Friends of the Forest are actively participating in restoration efforts. The Gabrielino Trail has had several Boy Scout Troops as well as other volunteer groups provide maintenance. We are always looking for more volunteers to assist throughout the District. If you know of anyone interested, please contact me.

Thanks,

Dennis Merkel, CPRP, FPO

District Recreation Officer

Los Angeles River Ranger District

Angeles National Forest

Phone: 818 899-1900 Ext 229

Fax: 818 896-6727

Email: [dcmerkel@fs.fed.us](mailto:dcmerkel@fs.fed.us)

# VOLUNTEERS NEEDED



**THE CITY OF GLENDALE**  
Community Services & Parks Department

## Experimental Forest Workday

◆ **WHEN:**

**Sat. Feb. 1, 2014**

**9:00 a.m. - 12:00 p.m.**

The fire gate will close at 9:15 a.m., so please be prompt  
Gates will reopen at 12:00 p.m.  
(Conclusion of the event)

◆ **WHERE:**

Meet at La Tuna/Hostetter Fire Road intersection, in the Crescenta Valley, where La Tuna Canyon Road crosses the 210 Freeway

**Snacks and drinks will be provided**

**Wear sturdy shoes and protective clothing, bring water, sun screen, gloves and a hat**

**Questions?  
Call (818) 548-3795**

**It is time for our annual pilgrimage up the fire roads into the Verdugo Mountains.**

**Destination: The Experimental Forest**

**Join in our caravan as we drive up the undeveloped Hostetter Fire Road. This road requires high clearance vehicles.**

**Space is limited, so you must R.S.V.P. to reserve your place by calling us at (818) 548-3795.**

**Ridesharing is encouraged.**

**There are no restroom facilities or water at the site, so please go before your arrival.**

**Goal: Once we reach the forest, our task is to plant new trees, to water the established trees and to weed around the existing plants.**

**We will spend three hours up in the Forest (including drive time).**

Հայերեն տեղեկությունների համար գանգահարել  
հետևյալ հեռախոսահամարով (818) 548-2000

Para información en español, llame a (818) 548-2000

**Sponsored By:**



REASONABLE ACCOMMODATIONS WILL BE MADE UPON REQUEST.  
PLEASE NOTIFY US WITHIN 72 HRS PRIOR TO EVENT DATE.

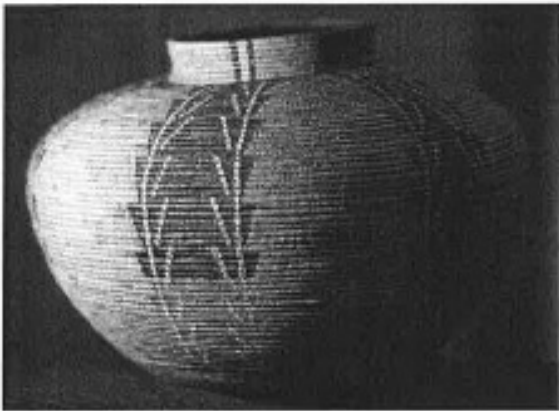


The Community Hiking Club and Placerita Canyon Nature Center Associates and  
County of Los Angeles Department of Parks and Recreation present

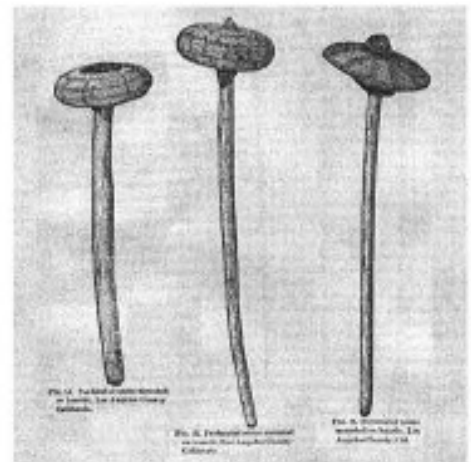
## Ancient Enterprises: How the Prehistoric Tataviam survived and thrived in an ancient landscape.

February 16, 2014 2:00 PM

In the Classroom at Placerita Nature Center



This lecture will cover the history of the Tataviam people: the Native American group who occupied the upper San Fernando Valley, the Santa Clarita Valley, Acton, Agua Dulce, and the southern Antelope Valley. The lecture will also cover archaeological as well as ethnographic evidence. Tataviam artifacts, such as manos, metates, projectile points, and scrapers will be shown. Children will be able to participate in hands-on activities.



Dr. Laurie Solis is an archaeologist and Adjunct Professor of Anthropology at College of the Canyons. She has over 15 years of experience as an archaeologist working for large environmental firms. She has conducted numerous investigations and excavations on Tataviam sites, as well as hundreds of other sites throughout the Great Basin. In addition, Dr. Solis has worked closely as a liaison with several



California Indian Tribes, including the Paiute Shoshone, Gabrieliño/Tongva, Morongo Band of Mission Indians, as well as the Tataviam/Fernandeño Band of Mission Indians. She is the author of the book, "Tataviam: People Who Face the Sun" - which is the only book ever published on this local Native American group. Which is available for purchase with a 10% discount bringing the special price to \$18. Cash only please.

See you there! It is fun, it is free, and great for the whole family!



Community Hiking Club

Placerita Canyon  
Nature Center



# VOLUNTEERS AT WORK



**Reports and plans being made at a Corba meeting**

**Reports and plans being made at a Los Angeles River Ranger District meeting**

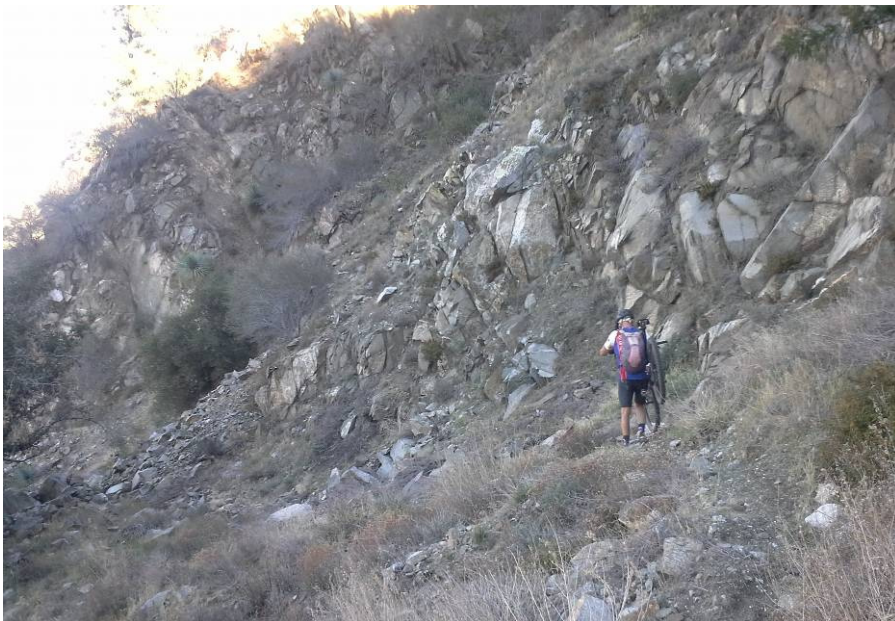


## VOLUNTEERS AT WORK



A 30" diameter tree being cut by the crew of David Ledford (LARRD Vol. 125), Michael Craig, Peter Mand, and John Syzdek on Bear Canyon Trail.

Another trail section is clear thanks to the work of David Ledford (LARRD Vol. 125), Michael Craig, Peter Mand, and John Syzdek



Angeles Mountain Bike Patrol inspecting the Hoyt trail

## Girl Scouts Restore Gould Mesa Campsite

## VOLUNTEERS AT WORK



During the weekend of November 16 to November 17, 2013 a group of girls completed a service project to help restore the Gould Mesa Campsite in the Angeles National Forest, which had been severely damaged, along with 161, 189 acres (252 square miles), in the 2009 Station Fire. Since its reopening in May of 2011, not much had been done to renovate the facilities.

When Kara Chuang, a senior level Girl Scout from Troop 3531, heard about this devastation she decided that this would be a perfect situation to form a Gold Award project, the most prestigious achievement a Girl Scout can achieve, around. She gathered a group of 14 girls ranging from 12-15 years old from around the community to take part in her “Backpacking Along the Gabrielino Trail” project to benefit the Gould Mesa trail site.

After soliciting supplies from various donor hardware stores, she took the girls and hiked the 2.58 miles from the trailhead on Ventura Blvd. to Gould Mesa. There she met up with Kevin Hunt, a member of the Los Angeles River Ranger District, who had been working closely with her to make this project come to life. He helped divide out the supplies and designate what needed to be done.

The girls worked tirelessly for several hours, painting the damaged exterior of the bathrooms and other facilities, despite the foul rainy weather that occurred that weekend. In addition, they also painted one of the camp’s picnic benches as well as the informational sign that is viewed by many visitors, both in poor condition. By the end of the day, the camp had a freshly painted bench, informational sign, and bathrooms. The renovated facilities now give the camp a whole new look. The remembrance of the damage caused by the Station Fire is no longer present in that camp. Gould Mesa is now replaced with the new look of the updated resources that can be used by hikers and backpackers for many more years to come.



## VOLUNTEERS AT WORK



**A El Prieto trail retaining wall that needs to be rebuilt**

**The retaining wall is now rebuilt thanks to the work by the "Friends of El Prieto" crew.**



**Mis Hermanos Pequenitos breaking up water dams in the Big Tujunga .**

# VOLUNTEERS AT WORK



**Mis Hermanos Pequenitos finding trash to remove from Big Tujunga**

**A truckload of trash removed from the Big Tujunga by Mis Hermanos Pequenitos**



**Crescenta Valley Trail Crew working on the Vineyard Trail.**

**Angeles Mountain Bikers and Trail Keepers**Mark Gage [mrgy33@hotmail.com](mailto:mrgy33@hotmail.com)

- **Trail Maintenance-** "Gardening by the Mile not the Yard."....  
Hikers and Bikers working together on trails. We work on the trails almost every Saturday. Our focus trails are Lower Sam Merrill, Castle Canyon and Echo Mt. Trails.

**Angeles Mountain Bike Patrol** [m.rmeguire@hotmail.com](mailto:m.rmeguire@hotmail.com)

Our mission is to provide educational and a responsible image to all trail users. To encourage rider's to obey forest regulations and working to preserve and protect trails. A.M.B.P is here to serve and inform the public.

**ANGELES NATIONAL FOREST FIRE LOOKOUT ASSOCIATION**<http://www.anffla.org>Pam Morey [pammorey@fs.fed.us](mailto:pammorey@fs.fed.us)

Forest Care Program Coordinator

909-744-9510 ext. 125



- **BECOME A FIRE LOOKOUT!** It's probably easier that you realize to become an active Fire Lookout with the ANFFLA. It just takes a few classes training (which are quite fun!) and the desire to spend some time in the Angeles National Forest. For more information about becoming a fire lookout [pammorey@fs.fed.us](mailto:pammorey@fs.fed.us) or 909-744-9510 ext. 125
- **Help rebuild Vetter Mtn Fire Lookout with a purchase of a reusable tote bag for \$5.**
- **Help support ANFFLA every time you shop!**  
Register your Ralphs Club Card and your Food4Less card and ANFFLA will receive a donation every time you shop. It's an easy to help support our efforts and costs you nothing!

**Antelope Valley Conservancy**[www.avconservancy.org](http://www.avconservancy.org)[avconservancy@yahoo.com](mailto:avconservancy@yahoo.com) Face book: Antelope Valley Conservancy

PHONE (661) 943-9000

- **Looking for a sustainable gift? Consider giving a Membership in Antelope Valley Conservancy. Only \$25. A gift that keeps on giving.**
- **If you use Google or any other search engine, please try [GoodSearch.com](http://GoodSearch.com) to help us build the Sustaining Endowment. Just type "av conservancy" as your charity and Yahoo donates a penny for each search- at no cost to you! Do it now, so you don't forget. Thank you!**

**Arroyos and Foothills Conservancy** <http://www.arroyosfoothills.org/>John Howell, (626) 796-0782 [johnrhowell@earthlink.net](mailto:johnrhowell@earthlink.net)

Face book: Arroyos &amp; Foothills Conservancy

- **PLEASE HELP NOW to Save Cottonwood Canyon and its extended wildlife corridors.**

**Audubon Center at Debs Park**

4700 North Griffin Ave. Los Angeles, CA 90031

PHONE: (323) 221-2255

Contact : [http://debspark.audubon.org/email/1617/field\\_location\\_email](http://debspark.audubon.org/email/1617/field_location_email)Calendar: <http://debspark.audubon.org/events>

- **Every Saturday 8:30 a.m. Free Tai Chi** contact: <http://debspark.audubon.org/forms/contact-us/636>

Giving just a little bit of your time can make a big difference to the success of the Audubon Center at Debs Park. We offer many opportunities to help us bring people together to appreciate, enjoy, and protect birds and nature.

**BEAR CANYON TRAIL CREW**

- **Feb 22<sup>nd</sup> Outing**

Temp. 52.5° (2.5° below avg.) 22nd-28th Showers, then sunny, **cool**

There is still plenty to be done for these first few months as we fix what has deteriorated over the summer on this heavily used trail. We had some assistance last month from a BSA Crosscut Saw crew that had so much fun they went back in for a second trip to clear the larger trees off our trail. If you see David Ledford, clap him on the back and say "Excellent Work!" Now we can get to the real work at hand, TREAD REPAIR! Most of the first part of the trail is in pretty good shape so I'd like us to wait until we are in Bear Canyon Proper before anyone starts working. This means hiking for at least an hour with tools. There are still some logs across the trail but not much that a few sawyers can't handle. Most of us should be prepared to work the tread where it has been narrowed considerably by Mother Nature's machinations.

There is plenty to be done for these first few months as we fix what has deteriorated over the summer on this heavily used trail. There is easy work to be done with loppers and trimmers and more serious tread repairs to perform as well. In addition, we will be joined by a chainsaw crew and they can always use some swampers to clear what they've cut. I have plenty of McCleods, shovels, and pick-mattoxes for the heavy work and a few saws, loppers and trimmers for the smaller work. However, if you have your own tools feel free to bring them.

**Link to subscribe to Bear Canyon List:** [http://eepurl.com/ID\\_Rr](http://eepurl.com/ID_Rr)

**Bear Canyon Trail Maintenance 2013-2014 Schedule** With Old Farmer's Almanac Weather Prediction

- **Mar 22<sup>nd</sup> Outing** Temp. 56° (1° below avg.) 21st-25th Scattered showers, cooler
- **Apr 19<sup>th</sup> Outing** Temp. 60° (avg.) 15th-20th Showers, then sunny, warm
- **May 17<sup>th</sup> Outing** Temp. 66° (2° above avg.) 11th-19th Sunny, warm inland
- **Jun 14<sup>th</sup> Outing** Temp. 68° (avg.) 13th-17th Sunny inland

**Big Santa Anita Canyon**

<http://www.bigsantaanitacanyon.com/>

- **Open Year round, 6 am to 8 pm every day.**
- **The road is gated and the gate is locked at night.**

Be sure to return to your car before 7:30 pm or you may not get out! During and after heavy rains, fires, or after significant earthquakes, and during fire alerts the road may be closed.

• **The Sierra Madre Police Dept. is in charge of locking/unlocking the gate. If you are concerned that the road might be closed you can call them for info: 626 355-1414.**

- **Adams Pack Station Contact:**

Friday, Saturday & Sunday 8:00 am - 5:00 pm (626) 447-7356

**Blight Busters Trail Crew**

Danny Treadway

[dayhiker86@yahoo.com](mailto:dayhiker86@yahoo.com)

**Boy Scouts of America Los Angeles Area Council**

<http://www.laac-hat.org/>

**California Trail Users Coalition (CTUC)**

<http://www.ctuc.info/ctuc/>

- **Feb 19<sup>th</sup> MEETING** Come and Join Us CTUC meets on the 3rd Wednesday of every month at 5:00 p.m. at 3550 Foothill Blvd., Glendale, CA.

Our meetings are open to everyone who wishes to participate. Volunteers have a great time working together on these types of projects. To volunteer on one of our projects, please join us by calling our Chairman, Terry Kaiser at 818-353-4682. You may also email: [edwaldheim@aol.com](mailto:edwaldheim@aol.com)

- **CTUC MAPS** The first map in our series was completed in 2005 and now, several years later, there are eight maps in print with as many as four more in the works. CTUC maps are unique in that they are not complete inventories of routes. Instead they are travel guides to the area with selected routes shown.

For more information: <http://www.ctuc.info/ctuc/index.php/maps>



**Parks, Recreation & Community Services Dept**<http://www.ci.glendale.ca.us/parks/default.aspx> 818-548-2000**• FEB 1<sup>st</sup> Experimental Forest Tree Planting and Watering (See flyer on page 6)****Location:** Hostetter Fire Road - off La Tuna Canyon Road near the 210 Freeway**Time:** 9 a.m. to 12 noon**Description:** We are heading up to the Experimental Forest at the top of the Verdugo Mountains for a morning of tree planting and watering.**Meet** at the Hostetter Fire Road gate at 9 a.m. The gate will close promptly at 9:15 a.m. This is a car-caravan, car-pooling event. High clearance vehicles such as pick-up trucks and SUVs are strongly recommended.**Space is limited** so please call (818) 548-3795 to reserve your spot.**• Feb 8<sup>th</sup> Riverwalk Workday****Location:** Glendale Narrows Riverwalk, 300 Paula Ave., Glendale, CA 91201

(Corner of Paula Ave &amp; Garden St)

**Time:** 8:00 a.m. - 12:00 p.m.**Description:** We are headed back to the Los Angeles River to help with the maintenance of the landscaped areas along the trail.**Info:** Questions? Call us at (818) 548-3795**• Feb 22<sup>nd</sup> Fourth Saturday Wilderness Workday****Location:** Deukmejian Wilderness Park**Time:** 8 a.m. to 12 noon**Description:** Join us once again for our regular Third Saturday Wilderness Workday (this month held on the fourth Saturday in observance of the President's Day weekend). We'll water our newly planted trees and remove invasive species from the park. This is a great program for families, students needing community service hours, church groups, and community organizations.**Wear** sturdy shoes, long sleeves, and bring sunglasses, sunscreen and a hat. We'll provide the drinks and snacks. **You do not need to RSVP for this event unless** you are bringing children under the age of eighteen.**For more information** call (818) 548-3795.**Community Hiking Club [communityhikingclub.org](http://communityhikingclub.org)****661-259-2743****Dianne Erskine Hellrigel email: [zuliebear@aol.com](mailto:zuliebear@aol.com)****• Feb 1<sup>st</sup> 1-Arroyo Seco from Gould Mesa to the Brown Mountain Dam****This is a beautiful hike** through a riparian area with running water and pools with Rainbow trout. It is 5 miles RT with very little gain. There is a 1 mile hill that you descent to get into the Arroyo Seco, and unfortunately, you need to go UP on the way out. This was initially in the burn area, near the area where the Station Fire started. It is wonderful to see how well it is recovering. If you've hiked this area with us before, we used to go all the way to Oak Flats. This trail is impassible and closed. BUT, the trek to the Debris Dam is gorgeous. And we will eat lunch at Paul Little picnic area, which is near the debris dam. It is 5 miles RT.**Meet at Towsley Cyn** in the parking area in front of the gate at 8:00 for an 8:15 departure to the trail head if you wish to carpool. Please help your driver by paying a little bit for gas.**Directions to Towsley Cyn:** Take the I-5 freeway to the Calgrove exit. Exit. Turn towards the west. (Right if you are coming from Valencia, left if you are coming from the San Fernando Valley) Follow the road around, go through the signal, and turn immediately into the driveway for Towsley Cyn. Park in the outside lot and look for your leader in the lot). You can spot your leader by looking for the American Flag.**Directions to the Trail head:** Take the I-5 South to the 210 East. Exit Hwy 2 NORTH. Turn left. Follow this through La Canada. There will be a parking area on the right with a sign indicating several nearby trails. **Rated:** Easy (except for the hill up, but you can take your sweet time with this)**Leader:** Dianne**(cont P18)**



As you approach the parking area, this is what it looks like:

Here is the addresses of the homes along the trail access. Park just before this. It will be much easier to meet at Towsley and Carpool. An Adventure Pass is not needed to park here.



Make sure you don't pass this. The parking area will be just behind you!

(cont P19)

• Feb 8<sup>th</sup> - Liberty Cyn to Phantom Trail to Malibu Creek State Park.

This hike will be a 9 mile loop with approx 900 ft gain in the Santa Monica Mountains through Liberty Canyon, connecting to the Phantom Trail, then down into Malibu Creek State Park to the south end of Century Lake. We will then take the Forest Trail along the north end of the lake, and visit the rock pool before completing the loop back to the trailhead. We hope to see deer, coyotes and water birds.

Bring water, lunch, snacks, and shoes with good tread. The hike will include single track trails and some fireroads. We will also be keeping a pace that is moderate and may be too fast for beginning hikers. Moderate ++ for elevation gain and distance

To carpool, hikers can meet the leader at Towsley Canyon outside the gate at 6:45AM for a 7:00 AM SHARP departure to the trailhead or plan to meet at the trailhead at ~8AM. To meet at the trailhead: Take the 405 Fwy South to 101 Fwy North and exit at Las Virgenes. Turn left on Las Virgenes. Turn right at the light for Mulholland Hwy (if you pass the sign for the entrance to the State Park you have gone too far). On Mulholland Hwy, there is parking on the dirt shoulders on both sides of the road, watch for traffic.

We will go through an opening in the fence and a sign on the RIGHT (North) side of Mulholland Hwy and meet at the sign for the North Grasslands trail ( about 0.1 mile from Las Virgenes). Look for your leader holding a small American flag as there may be other hiking groups. which is where the hike will begin. Rated Moderate + Leader: Steve

• Feb 15<sup>th</sup> -Hummingbird Trail to Rocky Peak Fire Road

The Hummingbird Trail is only 2.3 miles by itself, with an elevation gain of a little over 1,000ft. Once you get up to the Rocky Peak Fire Road, it varies from somewhat flat with undulating hills, to more hills. This is a beautiful hike with lots of rock formations, caves, interesting plants and lots of animals. There are tons of caves that you will pass. You will love it. There's lots of stuff to photograph, and Lise will be going at a slow to moderate pace so you can take tons of photos. Don't forget your camera!

You will love this hike! The total mileage is about 7 miles.

To Carpool: Meet at Towsley Cyn outside the entrance gate at 8:00 for an 8:15 departure to the trail head.

Directions to the trail head: Take the I-5 South to the 118 freeway towards Simi. Exit at Kuehner Drive, and turn right. The parking area will be 0.2 miles from the freeway exit, on the right. Your leader will meet you there at apprx. 8:40.

Rated: Moderate with a couple of tough hills Leader: Lise

(cont P20)



- **Feb 16<sup>th</sup> -Nature Series see flyer on page 9**

- **Feb 22<sup>nd</sup> -Chantry Flat to Hermit and Sturtevant Falls**

**Hike Length:** 6 Miles with 700 feet elevation gain

**Classification:** Easy to Moderate

**Hike Pace:** Moderate (2 1/4 mph)

**Hiking Time:** 3 hrs with breaks

**Features:** Two waterfalls and a walk along side the musical waters of Big Santa Anita Creek.

**Hike Route:** The trail starts at Chantry Flat on a paved road. In a short distance the trail becomes a single track trail to Hermit Falls. From the falls we follow the trail pass Roberts' camp to Sturtevant Falls. After a rest we will hike back to Roberts' camp and follow a hiking road back to Chantry Flat.

**Trailhead:** From the 210 Frwy in Arcadia take the Santa Anita Ave. exit. Turn left (north) onto Santa Anita Ave and drive 6 miles to Chantry Flat. The group should meet at 07:45 at the lower trailhead as you enter. Restrooms are available and Adventure Pass required. NOTE this trailhead is very popular, parking can be difficult.

**Carpool:** Meet at Towsley Canyon front parking lot between 6:40 - 6:55. Carpool arrangements will be made at that time.

### **Concerned Off-Road Bicyclists Association (CORBA)**

**PHONE:** (818) 773-3555

**FACE BOOK:** <http://www.facebook.com/CORBAMTB>

<http://corbamt.com/>

**For schedule goto:** <http://corbamt.com/Calendar/index.shtml>

- **Feb 3<sup>rd</sup> COSTAC Monthly Meeting** The Conejo Open Space Trails Advisory Council meets the first Monday of the month to discuss Conejo Open Space Conservation Agency trails issue. The public is welcome to attend. **For more information, contact Nicole Tindell, 805-495-0545.**

- **Feb 24<sup>th</sup> Monthly CORBA Board of Directors meeting. All are welcome**

The Concerned Off-Road Bicyclists Association (CORBA) is an all-volunteer non-profit organization serving the mountain bicycling community of Los Angeles and its surrounding areas including southern Ventura County. We are dedicated to preserving open space, maintaining public access to public lands, and creating more trail opportunities for all to enjoy. We are a chapter of the International Mountain Bicycling Association.

### **Crescenta Valley Trail Crew aka CV Trail Crew**

**Karen Buehler 818-363-6216**

[karen.buehler2@gmail.com](mailto:karen.buehler2@gmail.com)

**Face book:** <http://www.facebook.com/#!/cvtrail.crew>

- **Feb 7<sup>th</sup>, 14<sup>th</sup>, 21<sup>st</sup>, 28<sup>th</sup> – 7:00 AM to 12:00 PM Trail Restoration Deukmejian Wilderness Park**

Meet in the Dirt Parking Lot

- **Feb 8<sup>th</sup> - 8:00 am to 11:00 am -Catalina-Verdugo Trail Maintenance-Glendale Sports Complex**

- **Mar 8<sup>th</sup> 9:00 am to 11:00 am -Rosemont Preserve Trail Maintenance**

We will also continue maintenance of the trails in Deukmejian Wilderness Park and other projects in Angeles National Forest.

**Friends of El Prieto Trail**

An organized group of individuals working on improving the trail to pre fire condition.  
 If interested in assisting, please contact Banner Moffat by e-mail.  
 - Banner Moffat

**HABITAT WORKS** <http://www.habitatwork.org>  
**Kim Clark or Tom Persons 818-353-4653**

**Haramokngna American Indian Cultural Center**  
[www.haramokngna.org](http://www.haramokngna.org) 663-449-8975.

- **Volunteers** As a cultural, environmental and arts organization, Haramokngna American Indian Cultural Center shares the flavor of Native American history, culture, traditions and arts with the Los Angeles community. We are always looking for energetic individuals ready to represent the Cultural Center during special events and regular office hours.
- **Check the Pukuu's Amazon Store** <http://astore.amazon.com/pukucultcomms-20>  
 When you order items thru our store, a percentage is donated to our center. THANK-YOU

**JPL TRAILBUILDERS**

**Kathie Reilly 818-354-8321 (JPL) Jack Russell 562-861-3187**

- Feb 8<sup>th</sup> Outing
- Mar 1<sup>st</sup> Outing

**WHAT'S HAPPENING:** We will continue maintenance on the Mt Lowe West Trail, working from the middle up (unless some other request comes up). Maintenance involves cutting back brush to 6 foot-wide clearance, and tread repair to 3 foot-wide.

We completed maintenance of the Dark Canyon Trail, from Angeles Crest to the Grizzly Flats fire road. Spanish Broom had almost completely overrun the trail in many places. Now it is clear, though it will probably grow back since the roots are very hard to remove totally. We made the rail wide enough to last much longer.

**Thanks to the following volunteers (listed by hours, then name) who volunteered with the JPL Trailbuilders in 2013. Those with at least 100 hours for calendar year 2013 receive an Annual Adventure Pass. Those who have accumulated 500 volunteer hours since January 1, 2007 will receive an Interagency Annual Pass.**

Name	Cal Hours	Total hours	Hours since Jan 2007	Name	Cal Hours	Total hours	Hours since Jan 2007
Guy Kuhn	252.5*	22,11.5*	1,152.5	Scott Van Sant	35	865.0	386
Kathie Reilly	104.5	4,727.0	860	Brad Leeger	7	7	
Jack Russell	88.5	2,502.5	721.5	Jack Welsh	6.5	6.5	
Kathryn Janssen	59.5	703.5	325.5	Nick Welsh	6.5	6.5	
George Aumann	36.5*	384.5*		JoAnne Simmons	5.5	5.5	147.5
<b>Totals</b>	602			<b>Total Since 1981</b>	39706.5		

\*have more hours with other trail groups

**WHAT'S HAPPENING:** We will continue maintenance on the Mt Lowe West Trail, going from our shortcut at the middle of Mt Lowe West Trail to the summit. We are getting into more poodle dog to remove, along with regular brushing and trail widening.

**High Country Riders**

Forest wide equestrian volunteer group that packs

Equipment, Material and Supplies etc. to your Trail or worksite. Packs Trash & Rubbish out of the Forest.

Contacts: Jonathan Schultz 951-830-3400 [maujds@earthlink.net](mailto:maujds@earthlink.net)

- Forest Certified Animal Packer,      • Master Teacher for "LNT",
- "C" Crosscut Saw Certifier          • Chainsaw "B" faller

**Glen Foster** 760-949-3497 or 760-508-0344 [pjgwfoster@aol.com](mailto:pjgwfoster@aol.com)

Certified Packer

**Matt Maxon** [matt@mattmaxon.com](mailto:matt@mattmaxon.com)

Continuing to work on the Stone Cyn Trail. No set schedule. Hope to get out for 1 day at least, every month. I'm very flexible If you want to come out contact me and we'll work something out. Brush clearance top down is my main focus right now, but there is plenty of tread that needs work, switch backs that need to be rebuilt, and 2 slide areas / washouts that need something done with them.

**Mount Wilson Bicycling Association**

- Feb 16<sup>th</sup> 8:00 am - 1:00 pm, Location TBD. May be on the 15th.

<http://mwba.org/>

**Mitch Marich**, [info@mwba.org](mailto:info@mwba.org)

Our first annual membership meeting was a complete success and very productive. Mitch Marich who is the acting President until that role gets officially filled opened up the meeting by way of introductions and a brief history of MWBA. Jenny Johnson followed up with data regarding membership as well as what we've been up to for the past 2 years. David Zaitz briefed the members on our financial status and just to calm everyone down after the melee during our board elections, Matt Lay gave the run down on our trail work activity for the year.

The most exciting part of the evening was the election of our new board members. The evening was madness as it was reminiscent of a pre-Civil War Congress filled with flying Whig powder, canes and pistols. A 3-way duel almost broke out between new board nominees. It was an electrifying evening filled with passion for trail work and the desire to be a vital part of our organization. Once the powder settled and the votes were tallied, everyone put down their weapons and hugged it out, as all of our nominees were elected to the board!

A hearty welcome goes out to Banner Moffat, the founder and driving force behind Friends of El Prieto; Mark Gage, you can always find him working on Lower Sam Merrill; Pierre Dupuy, a founding member of MWBA who we have "re-found" and plays the guitar and wears overalls in a band called Wreck N Sow; and Brad Benam, another re-found member of MWBA.

We are very excited to have them all aboard as they bring, collectively, a vast knowledge of trail work and advocacy as well as years of experience.

**Mount Wilson Institute**

P. O. Box 1909, Atlanta, Georgia 30301-1909  
 (404) 413-5484 <http://www.mtwilson.edu/>

- **Cosmic Cafe close for the winter**

- **Support Mount Wilson Observatory**

- We Need Your Help - Mount Wilson Observatory is privately owned and receives no continuing state or federal support. You can help ensure the continued operation of this science heritage.

- **Join** our Friends of Mount Wilson Observatory organization to receive a variety of member benefits and stay informed on the latest scientific and other activities from the mountain.

- **Contribute** to our Second Century Campaign. As Mount Wilson continues into its second century, a capital campaign is being developed to preserve this great observatory for future generations.

- **Be a Docent Tour Guide** - We welcome applications from individuals interested in participating as docents in our very active guided tour programs.

**For application information go to:** <http://www.mtwilson.edu/docents.php>.

**Mount Wilson Race**

<http://www.mountwilsontrailrace.com/HOME.html>

- February 9<sup>th</sup> Outing
- March 9<sup>th</sup> Outing
- April 13<sup>th</sup> Outing
- May 11<sup>th</sup> Outing

**The Mt. Wilson Trail Race Committee will be holding a series of trail work days on the trail to get it ready for the 2014 MWTR on Saturday, May 24.**

**Group leaves Lizzie's Trail Inn** at 167 E. Miramonte in Sierra Madre at 8:00A sharp. Work will go until noon.

**Bring** sun screen, water and gloves. Tools will be provided.

Essential that anyone who wants to volunteer email Pete Siberell at [psiberell@santaanita.com](mailto:psiberell@santaanita.com) so we have enough tools set out. **Any questions? Call Pete Siberell at 626-574-6373.**

Thnks.

Pete

**SAN GABRIEL TRAILBUILDERS**

<http://www.sgmtrailbuilders.org>

Ben White: 626-303-1078

[ben@sgmtrailbuilders.org](mailto:ben@sgmtrailbuilders.org)

**We work on the first, third, and fifth Saturday of each month** Trail working volunteers may join the San Gabriel Mountains Trail Builders in the continued restoration process for trails in and around Crystal Lake, East Fork, Heaton Flats, Upper & Lower Bear Creek, the Baldy Area and many other locations on the Angeles National Forest.

**Learn how to use all the Trail tools** to work the trails. Help you learn how to get your certificates for Chainsaw and Crosscut Saws use on the National forest.

**If you would like to volunteer** your time, please send e-mail to [feedback@crystallake.name](mailto:feedback@crystallake.name) I will let you know when, where, and what you need to know to join us.

**MEETING LOCATION :**

San Gabriel Canyon Gateway Center,  
 1950 North San Gabriel Canyon @ 7:30am

**SCENIC MT. LOWE RAILWAY** <http://www.mtlowe.co>

Brian Marcroft 562-868-8919 E-mail: [Emworks@verizon.net](mailto:Emworks@verizon.net)

**Sierra Club**

[www.angeles.sierraclub.org/pasadena/](http://www.angeles.sierraclub.org/pasadena/)

Angeles Chapter Office

3435 Wilshire Blvd. #660, Los Angeles, CA. 90010-1904

213-387-4287

For more calendar details go to [http://www.angeles.sierraclub.org/pasadena/outings\\_3mos.html#Feb](http://www.angeles.sierraclub.org/pasadena/outings_3mos.html#Feb)

- Feb 1<sup>st</sup> Mt Fuji (3600')
- Feb 5<sup>th</sup> 7:00 PM

**Monthly Meeting: "Squirrels in Southern California: What happens when the Eastern Fox meets the Western Gray?"**, presented by Alan Muchlinski, Emeritus Professor of Biological Sciences, California State University-Los Angeles. Information on Group's hikes, outings, and conservation activities. Newcomers always welcome. Doors open at 7 pm, program at 7:15 pm at Eaton Canyon Nature Center, 1750 N Altadena Dr in NE Pasadena. For information contact Group Membership Chair, Elizabeth Pomeroy

- Feb 6<sup>th</sup>/13<sup>th</sup>/20<sup>th</sup>/27<sup>th</sup> Henninger Flats Conditioning Hike
- Feb 8<sup>th</sup> Orchard Camp
- Feb 8<sup>th</sup> South Pasadena Historic Walk
- Feb 12<sup>th</sup> Zion Loop Hike From Chantry Flats
- **Registration is required before February 21, 2014 1:00 AM**
- March 7<sup>th</sup> to 9<sup>th</sup> Winter Combo Bus Trip to Mammoth Lakes
- Feb 22<sup>nd</sup> Snowshoe/Cross-Country Ski Trip to Chilao Campground
- Mar 1<sup>st</sup> El Prieto Cyn to Little Roundtop

**Tree People** <http://www.treepeople.org>

FACEBOOK: Tree People

12601 Mulholland Drive

Beverly Hills, CA 90210 Telephone (818) 753-4600

For more calendar details go to:

<http://www.treepeople.org/calendar/2014-02>

- Angeles Forest Supervisor Training Feb 9<sup>th</sup>/22<sup>nd</sup>
- Angeles Forest Restoration Feb 27<sup>th</sup>/28<sup>th</sup>
- Campus Planting Feb 1<sup>st</sup>/22<sup>nd</sup>
- Fruit Tree Grafting Workshop Feb 15<sup>th</sup>
- Fruit Tree Program Feb 28<sup>th</sup>
- Moonlight Hike Feb 14<sup>th</sup>
- Park Work Day Feb 6<sup>th</sup>/8<sup>th</sup>/13<sup>th</sup>/20<sup>th</sup>/27<sup>th</sup>
- RAP Inventory Training Feb 15<sup>th</sup>
- Santa Monica Mountains Restoration Feb 1<sup>st</sup>/9<sup>th</sup>
- Rainwater Harvesting Feb 1<sup>st</sup>
- Santa Monica Mountains Restoration Feb 1<sup>st</sup>/8<sup>th</sup>/22<sup>nd</sup>/23<sup>rd</sup>

**SOUTHERN CALIFORNIA MOUNTAINS FOUNDATION**

<http://mountainsfoundation.org/>

Sarah Miggins [smiggins@fs.fed.us](mailto:smiggins@fs.fed.us) 909-382-2796

602 South Tippecanoe, San Bernardino, California 92408

- Animal tracking Feb 1<sup>st</sup>
- Bald Eagle Count Feb 8<sup>th</sup>
- Bald Eagle Celebration Feb 8<sup>th</sup>



**Pacific Crest Trail Association**

<http://www.pcta.org>

**FACE BOOK:** <http://www.facebook.com/#!/PCTAFan>

Liz Bergeron lbergeron@pcta.org

Sacramento, CA Phone: (916) 285-1846 x 2

- **April 12<sup>th</sup> Annual Meeting**
- **April 25<sup>th</sup>/26<sup>th</sup> ADZPCTKO**
- **Jan 1<sup>st</sup> - Dec 30<sup>th</sup>. 'Fannypack' Projects [FALC]. SBNF, ANF, CNF, and BLM.**

Swat teams to inventory trail, clear trees and boulders, and repair slides on short notice.

Open to qualified volunteers.

Contact: Pete Fish, Email: [pickaxepete@sbcglobal.net](mailto:pickaxepete@sbcglobal.net), Tel.: 805-658-6540

or: John Hachey Email: [goaliejhachey@msn.com](mailto:goaliejhachey@msn.com), Tel.: 909-605-3219.

**Pacific Crest Trail maintenance volunteers are needed** throughout California, Oregon, and Washington to help repair erosion problems, clear fallen trees, and remove encroaching brush. Help make the hiking and equestrian experience a better one now and for future generations.

Volunteers can head out for the day, a weekend, or longer with car and backcountry camping options available. There are no fees to volunteer and meals are included at our overnight events. Prior trail maintenance skills are not needed on most projects, experienced crew leaders are there to teach you the skills needed. To learn more contact Merrit Hoeh at (916) 285-1838, [volunteer@pcta.org](mailto:volunteer@pcta.org) or check out the volunteer schedule at [www.pcta.org](http://www.pcta.org). Have an adventure of a lifetime by volunteering on the Pacific Crest Trail!

**Volunteers of the Angeles National Forest**

**Wrightwood, CA** <http://www.grassyhollow.net>

Visitor Center Phone #: (626) 821-6737 Loren Lake [lorenll@verizon.net](mailto:lorenll@verizon.net)

- **The Grassy Hollow Visitor Center and Grounds are open for day-use only**

**Hours: Saturdays, Sundays and Holidays 10:00 am to 4:00 pm**

**Weekdays- for school groups, youth organizations, etc. By Appointment**

**William S Hart UHSD of Santa Clarita ANF Crew 135**

**Kevin Sarkissian 661.250.0022 X 552** [ksarkiss@hartdistrict.org](mailto:ksarkiss@hartdistrict.org)

Continuing on January 13, 2014 'Outdoor Recreation and Wilderness Conservation' will again be offered as a 5 credit class through the District's Regional Occupational Training Program as a collaborative training venture between WS Hart Union High School District, USFS, PCTA, LA County Parks and Rec, and the MRCA. In addition to high school credit, participating students may be offered a paid work experience internship while gaining practical exposure to land management practices and career pathways related to conservation and resource management including; trail maintenance and construction; wildlife conservation; backcountry navigation; environmental stewardship; search and rescue response; and much more!

This 18 week class is also open to interested non-district students, adults, and agency personnel.

For a complete course outline,

visit [www.hartrop.com/forestry](http://www.hartrop.com/forestry)

or contact Kevin Sarkissian at

[ksarkiss@hartdistrict.org](mailto:ksarkiss@hartdistrict.org)

661.259.0022 X 552



Los Angeles River Ranger District  
12371 North Little Tujunga Canyon Road  
San Fernando, CA 91342

TUNDRA by Chad Carpenter, Los Angeles Times Aug 2, 2010 email: info@tundracomics.com



**Volunteer Today**  
Send this in Right Away to  
Dennis Merkel —12371 N. Little Tujunga Canyon Rd  
San Fernando, CA 91342

Name \_\_\_\_\_  
Address \_\_\_\_\_

Phone # (hm) \_\_\_\_\_  
e-mail \_\_\_\_\_

Interests  
Indicate what you would like to do. Circle area or enter your interests.  
Campground Host/ Visitor Information/ Smokey Bear - Fire Prevention/  
Recreation Aid / Forest Patrol /Resource Management / Computers/  
Research-Librarian / Office Clerical / Tour guide/ Fire Lookout/  
Conservation Education / habitat restoration and tree planting  
Other: \_\_\_\_\_