

# VOLUNTEER TODAY

Dedicate Yourself to Caring for the Land and Serving the People

<http://www.fs.fed.us/r5/angeles/volunteering/>

## Los Angeles River Ranger District Volunteer Newsletter Dec 2013

Dear Angeles Volunteers:

This is the time of year when the Forest Service tallies the accomplishments of its volunteers for the past year. Every national forest is required to file a report of their volunteer hours. These reports are sent to the Washington Office – the office of the Chief of the Forest Service.

On the Angeles National Forest, the hours and accomplishments that you have recorded and turned in to your supervisor throughout the year are totaled with all of the other volunteers, and included in our annual report.

In 2012, volunteers on the Angeles NF contributed more than 78,000 hours of service, valued at \$1.7 million.. That is a sizeable contribution! We're still counting the numbers for 2013, so I can't give you a total figure yet – but I'm certain that it will be as impressive as in past years.

During this Thanksgiving/Holiday season, I would encourage you to take a minute and reflect on your accomplishments over the past year. The fact is that what you give is more than what can be shown in a number:

You've given of yourself, to something greater than yourself.

You've given to the care of our public lands.

You've served the people who come there to visit and enjoy all that these lands offer.

You've helped the staff of the Angeles accomplish what they quite truthfully couldn't do without you.

And you've set an example for others.

On behalf of the U.S. Forest Service, I would like to extend my thanks to you for your gift of public service. There is tremendous value in what you do.

Best Wishes for the Season,

Kathy

Kathy Peterson

Volunteer/Partnership Program Consultant

Angeles National Forest

In The Los Angeles Times .....	pg 2
Los Angeles Times Flash Forward .....	pg 2
BE ON THE LOOKOUT!.....	pg 2
MOUNT LOWE EXCURSION 2013.....	pg 3
November meeting minutes.....	pg 4
Special announcement.....	pg 5
Special report.....	pg 6-7
Volunteers At Work.....	pg 8-10
Volunteers Needed.....	pg 11
Volunteer group news .....	pg 12-21

We humans are different from other  
animals.

We do the one thing they can't.

Kill at a distance.

Electronic copy of Newsletter at:

<http://www.mtlowe.co/VolunteerNews.htm>

**A Proposed Change in the Mt. Wilson Railroad Plans.**

**THE MT. WILSON RAILROAD**

Very little has been said lately about the proposed electric railway from Pasadena to Wilson's Peak. A Pasadena man said yesterday that Prof. Lowe now promises to build his road by way of Rubio Canon, a detour which would make the road from its valley terminus to the summit of the mountain fully thirty miles in length--much longer than by the route through the Eaton canon. It is suspected that the opposition set up by the owners of the new Mt. Wilson trail, which is to be eventually changed to a wagon road suitable for a railroad as well, has something to do with the Rubio Canon announcement. From present indications is not expected that the mountain road will be built this year

**IN THE LOS ANGELES TIMES FLASH FORWARD!**

Shortly after incorporation it became apparent that the railway, which almost immediately began construction, would not be building to the peak at Mount Wilson, due to a lack of cooperation in settling rights-of-way. The new terminus would be Oak Mountain, later to be named Mount Lowe, in honor of the builder of the Railway.

The Mt. Lowe railway opened on July 4, 1893 and was met with quick interest and success. For the seven years during which Lowe owned and operated the railway, it constantly ran into hard times. For one, its location was off the beaten path of the common traveler with little means of transportation up to the Altadena hillside. For another, fares did not cover the cost of continuous construction done on money borrowed at 10½% interest, and the opening day fare of \$5.00 (equal to about \$100 in 2013) would not remain attractive to the greater public.

By 1899 Lowe had gone into receivership and eventually lost the railway to Jared S. Torrance. Lowe's fortunes had been all but lost, and he lived out his remaining days at his daughter's home in Pasadena where he died at age 80.

**BE ON THE LOOK OUT!**

**I'd like to get all missing/damaged trail signage fixed. Anytime you are out in the forest and notice missing/damaged trail signs, or locations where signage is needed, please let me know by either emailing or calling me. Thanks.**



Dennis Merkel, CPRP, FPO  
District Recreation Officer  
Los Angeles River Ranger District  
Angeles National Forest

**Phone:** 818 899-1900 Ext 229

**Fax:** 818 896-6727

**Email:** [dcmerkel@fs.fed.us](mailto:dcmerkel@fs.fed.us)<mailto:dcmerkel@fs.fed.us

# MOUNT LOWE EXCURSION 2013

**On December 14, 2012, Please join us for a journey into the past.**

The 118 year old journey will take you to the Alpine Tavern, a 22-room Swiss Chalet hospice with a complement of amenities from tennis courts and wading pools, to mule rides.

The Tavern had all the conveniences of a modern hotel, bell-boys, excellent heating and a cuisine unexcelled. It was a place for one to linger, and many did for weeks, to drink in the pure mountain air and restfulness of these calm heights.

Then the Tavern disappeared into history.



**Your journey will take you along the old railroad route beginning at the gate to the Forest Road (top of Chaney Trail Rd.) to THE CAPE OF GOOD HOPE, to DAWN STATION, HORSESHOE CURVE, CIRCULAR BRIDGE, GRANITE GATE then to THE TAVERN.**

**At THE TAVERN there will be Displays, food, souvenirs and guides to explain what became of the tavern.**

## **THIS IS OUR YEARLY FUND RAISER**

- Fee is \$2.00 per person
- Pick up tickets on the morning of the event.
- No more than 70 people can attend this journey
- So sign up ASAP....Email or call for reservations. **(Email preferred)**

**CONTACT: Brian Marcroft**

**Email: [emworks@verizon.net](mailto:emworks@verizon.net) Telephone: (562) 868-8919**

### **BE READY TO PROVIDE THE FOLLOWING:**

- 1. The number of tickets needed**
- 2. Your Phone Number**
- 3. Names of those coming**
- 4. If you are bringing a vehicle let us know the total number of occupants that your vehicle can carry.**  
**We will need the use of high occupancy vehicles (5 or more passengers) Good road clearance a must!**  
**DO NOT REQUEST A CALL BACK UNLESS IT IS ABSOLUTELY NECESSARY**

**MEET AT THE NORTH END OF LAKE AVE. IN ALTADENA 7:30 AM (Lake & Loma Alta)**

- We will organize carpools - DEPART AT 8 AM
- Arrive at Tavern site at 8:45 AM
- Depart from Tavern at 12:30
- Return to Lake Ave. at 1:00 PM

**NOTE: We will be behind a locked gate on a restricted road. Those entering will be required to stay with the group the entire time of the event. (8 AM to 1:30 PM)**

### **SPONSORED BY:**

**ANGELES NATIONAL FOREST  
Scenic Mt. Lowe Committee Volunteer Group  
Website: [www.mtlowe.co](http://www.mtlowe.co)**

# Minutes of Bi-Monthly LAARD Volunteer Meeting November 20, 2013

## By Kathie Reilly

### Organization Reports:

- California Trail Users Coalition (CTUC): officers were at an OHV meeting at Little Rock
- Angeles Mountain Bikers and Trail Keepers, Mark: brushed Mt Echo Trail. Showed new tool, Easy Reacher, a longer 12' Caltrans trash picker, \$63 can pick up trash way over the side of trails. Still having lots of issues blocking short cuts.
- Angeles Mountain Bike Patrol (CORBA): absent, Dennis read report from Steve. CORBA's volunteer work has concentrated in Santa Monica Mountains for past few months, and the Spring Fire recovery effort. All the closed trails in that area have been re-opened, with significant tread work for the coming winter. Steve has been moving deadfall, minor brushing and trash collection in Angeles. Will be joining MWBA on El Prieto. CORBA will return to Strawberry Peak Trail next month and through the winter.
- JPL Trailbuilders, Kathie: still working Mt Lowe West Trail, now towards the top with lots of poodle dog. When it gets too cold up there, we would like to work Mt Lukens road at tree farm since it is overgrown with Spanish broom.
- Angeles National Forest Fire Lookout Association: absent, Vetter Mt lookout will start rebuild after winter.
- Arroyo Seco Canyon, Patty and Tom: absent, working at Gould Mesa
- Mt Disappointment 50 k: absent, no one has heard from Gary in a while, concerned.
- Terry Tanner: working on signage at Charlton, with rec staff in high country.
- Scenic Mt Lowe Committee, Brian: demonstrated tool - puller bear, for Spanish Broom. Plan to use it on Mt Lowe fire road. Will have yearly event Dec 14 to Mt Lowe campground.
- Boy Scouts of America, David: removing downfalls on trails, new since Santa Ana's, on Mt Waterman Trail, Grizzly Flats road. There will be projects on Gabriellino and Kenyon DeVore Trails.
- William S. Hart Trails: absent
- Angeles Crest 100 Mile Endurance Run, Hal: removing down trees in Charlton and PCT. Trying to use 9 inch circular saw on poodle dog
- Bear Canyon, Andy: Got to trail camp, beyond is hard to flag. From Tom Sloan has big tree fall, and before campground has 4 foot down tree. David Ledford volunteered his tree crew for next outing Dec 28.
- Tree People: absent
- Mounted Horse Patrol: absent
- Sierra Club, Don: working Strawberry Potrero, will work from Josephine if not being worked by Conservation group.
- Mt Wilson Bicycle Assoc (MWBA): finished lower Sunset Trail, next is El Prieto and upper Sunset Trails
- MIS Hermanos Pequenitos (My Little Brothers), Andreas: Using water pressure from gas generated pump to remove graffiti at Delta Flats and Wildwood. It is very heavy to take very far. Trash pickup at Stoneyvale yielded 455 gallons. Have repellors going down to get trash. Will be working Sulfur Springs and Big Tujunganga.
- Chantry Flats: trash pickup with Lutheran Church at Sturtevant and First Water. There have been several other projects.
- Big Santa Anita Canyon: low foot traffic. Fatality on Veterans Day at Hermit Falls. Car fire in parking lot. Asked when is tick season – spring.
- Crescenta Valley Trail workers (CV): absent

USFS Dennis: Winterized high country campgrounds and closed. Chilao open until first snow storm.

National Forest Foundation with Alcoa volunteers improved Vogel Flats picnic area.

This meeting place will be having more security, so next time we may not have access to overflow parking in the back.

Dennis will let us know then.

Get your volunteer hours in by end of November for this calendar year (no longer using fiscal year).

Kathy Peterson, Volunteer/Partnership Consultant: Send pictures of accomplishments for December Volunteer Directory by Dec 1 to rdobroman@juno.com



## ***Health From The Ground UP!***

### **Foot Fitness Workshop**

*"The human foot is a masterpiece of engineering and a work of art." --Leonardo di Vinci*

A great place to begin improving health is with your feet in a fun, interactive, & educational workshop setting!

Join Kinesiologist & Physical Educator Ron Jones to experience a unique workshop geared exclusively for feet. This unique workshop will cover the following foot-related topics:

- The Human Foot as a "Masterpiece of Engineering"
- History of Shoe Design
- Biomechanics & Neurology of Feet
- Choosing "Foot-Friendly" Shoes
- Foot/Ankle Mobility & Strength Exercises
- Barefoot Running & Minimalist Shoe Trends
- Safety & Fall Prevention with Feet, Ankles, & Shoes
- Plantar Fasciitis & Pain Management for Feet
- Trigger Point Release Tools & Self Massage for Feet



- ✓ **Place:** Placerita Nature Center
- ✓ **Address:** 19152 Placerita Canyon Road, Newhall, 91321
- ✓ **Date:** Sunday, December 15<sup>th</sup>, 2013
- ✓ **Time:** 2:00-3:30 PM
- ✓ **Price:** Sponsored by Community Hiking Club of SCV
- ✓ **Info:** Ron Jones, MS @ 661.993.7874
- ✓ **Websites:** [www.RJFootFitness.com](http://www.RJFootFitness.com) & [www.Placerita.org](http://www.Placerita.org)

## POODLE-DOG BUSH AND THE GAS POWERED PRUNING SAW by Terry Tanner, ANF Volunteer 11

This is a brief summary of the Poodle-Dog Bush (PDB) cutting session in Charlton Flat PA Site P20 on 11/16/2013. I would expect that Hal Winton, Volunteer 12, will provide a more detailed analysis. Hal was operating his saw for this session.

The largest PDB stalks are now over six feet tall and 1.5 inches in diameter, and are “woody” and tough to cut. The Gas Powered Pruning Saw (GPPS) with the 2 foot extension allows the operator to be safely away from the falling PDB stalks and from the splatter of chips and cut fibers.

The GPPS works well against the large woody stalks when the cutting chain is held against the stalk to cut it. The GPPS has some difficulty cutting newer growth flexible stalks. The GPPS can be used in a slashing motion against the newer growth flexible stalks, but the chain loses speed upon impact and the repeated stress on the turning flexible shaft might shorten the service life of the GPPS. The GPPS with the 2 foot extension is shown below:



Cont to p7

## **POODLE-DOG BUSH AND THE GAS POWERED PRUNING SAW cont**

## **SPECIAL REPORT**



**The result of using the GPPS  
against the PDB**

**The Largest branches shown  
here are about 1.5 inches in  
diameter.**



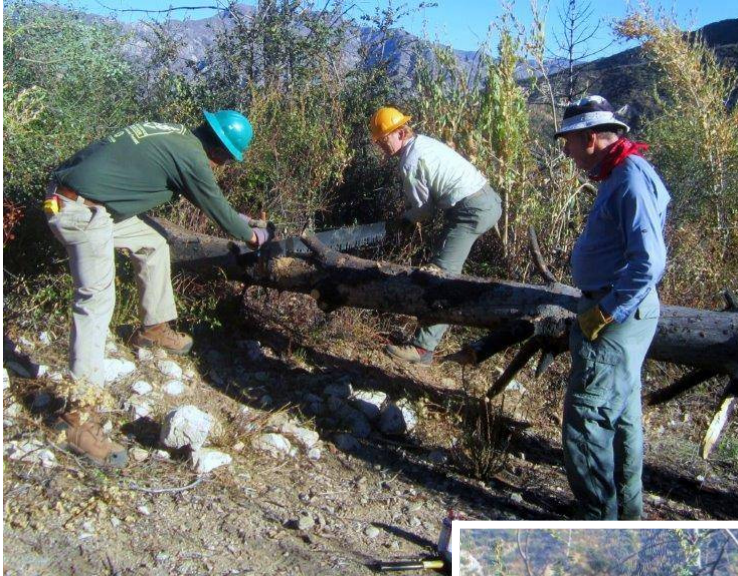
**The cutting head does get jammed  
with cutting debris and requires  
cleaning after about 1/2 hour of use  
as shown:**

**Using manual swinging cutting tools is ineffective against the large woody stalks.**

**Using loppers is tedious and slow. Using the GPPS is still a strenuous job for the operator. Using a gas powered brush cutter with a 9" soft metal saw blade combined with heavy protective clothing (Haz-Mat) might be the most efficient method.**

**No matter what method is used, it will be a strenuous and time consuming job to clear the PDB from the roads and trails.**

## VOLUNTEERS AT WORK



**Dave Ledford leading a team of David and Thurman to crosscut a tree laying on the Grizzly Flats Trail.**

**Thanks to the work of Dave, David and Thurman the cut tree is removed from Grizzly Flats Trail.**



**Thanks to the work of Dave, David and Thurman another section of the Gizzly Flats Trail is now open.**





## VOLUNTEERS AT WORK



**The Boy Scouts finishing rebuilding the amphitheater and repainted the benches at the Chilao Visitor Center**

**David Ledford using a pole saw to remove low laying branches from the Grizzly Flats Trail.**



## VOLUNTEERS AT WORK



**Mount Wilson Bicycle Assoc. (MWBA) and Friends of El Prieto plan their work for the El Prieto Trail**

**Mount Wilson Bicycle Assoc. and Friends of El Prieto work on the El Prieto Trail.**



**The El Prieto trail is now wider and safer at some of the spots with steep drop-offs and with improved drainages and bench cuts, it should fare better in the upcoming rainy season thanks to the work of Mount Wilson Bicycle Assoc. and Friends of El Prieto**

# VOLUNTEERS NEEDED

## ARROYOS & FOOTHILLS CONSERVANCY

### NATURAL HABITAT RESTORATION

**FIRST SATURDAY OF EACH MONTH, 9-12, MILLARD CANYON, ALTADENA**

**Join us for important environmental work in the woods of Millard Canyon. Led by our Restoration Specialist Bill Ramseyer. Learn about the ecology of our local foothills. Meet the local animals and actually improve their lives!! Help save the planet... one canyon at a time!!**

- December 7<sup>th</sup>
- January 4<sup>th</sup>
- February 1<sup>st</sup>
- March 1<sup>st</sup>

**Meet @ lower Millard fence on Canyon Crest Rd (off Lincoln).**

**Email Bill: [wmr83@earthlink.net](mailto:wmr83@earthlink.net) for directions, what to wear, and to RSVP.**

**FUN FUN FUN!!**

## Altadena Crest Trail Restoration Working Group

## VOLUNTEER GROUP NEWS

626-797-7243 [www.altadenatrails.org](http://www.altadenatrails.org)

Monthly meetings on second Tuesday at Altadena Community Center

### Angeles Mountain Bikers and Trail Keepers

Mark Gage [mrgy33@hotmail.com](mailto:mrgy33@hotmail.com)

- Trail Maintenance- "Gardening by the Mile not the Yard."....  
Hikers and Bikers working together on trails. We work on the trails almost every Saturday. Our focus trails are Lower Sam Merrill, Castle Canyon and Echo Mt. Trails.

### Angeles Mountain Bike Patrol [m.rmeguire@hotmail.com](mailto:m.rmeguire@hotmail.com)

Our mission is to provide educational and a responsible image to all trail users. To encourage rider's to obey forest regulations and working to preserve and protect trails. A.M.B.P is here to serve and inform the public.

### ANGELES NATIONAL FOREST FIRE LOOKOUT ASSOCIATION

<http://www.anffla.org>

Pam Morey [pammorey@fs.fed.us](mailto:pammorey@fs.fed.us) Forest Care Program Coordinator  
909-744-9510 ext. 125

- Help rebuild Vetter Mtn Fire Lookout with a purchase of a reusable tote bag for \$5.
- Help support ANFFLA every time you shop!  
Register your Ralphs Club Card and your Food4Less card and ANFFLA will receive a donation every time you shop. It's an easy to help support our efforts and costs you nothing!



### Antelope Valley Conservancy [www.avconservancy.org](http://www.avconservancy.org)

[avconservancy@yahoo.com](mailto:avconservancy@yahoo.com)

PHONE (661) 943-9000 Face book: Antelope Valley Conservancy

- Looking for a sustainable gift? Consider giving a Membership in Antelope Valley Conservancy. Only \$25. A gift that keeps on giving.  
• If you use Google or any other search engine, please try [GoodSearch.com](http://GoodSearch.com) to help us build the Sustaining Endowment. Just type "av conservancy" as your charity and Yahoo donates a penny for each search- at no cost to you! Do it now, so you don't forget. Thank you!

### Arroyos and Foothills Conservancy <http://www.arroyosfoothills.org/>

John Howell, (626) 796-0782 [johnrhowell@earthlink.net](mailto:johnrhowell@earthlink.net)

Face book: Arroyos & Foothills Conservancy

- Dec 7<sup>th</sup> NATURAL HABITAT RESTORATION (see page 11)

We have some very good news -- we just signed an agreement to buy 11 critical acres of wilderness in Pasadena's Cottonwood Canyon. Now we are starting to raise the money to save it.

Cottonwood Canyon runs straight west from the northernmost holes of Brookside Golf Course. As the Star News' Larry Wilson said in his recent article, "This is the wildlife corridor that lets bears like the one that caused such a ruckus last Thursday get back to the mountains safely. This is where I've seen two bobcats, one up close. This is home to a year-round spring that flows into the Arroyo."

There's much more to be told. Wildlife depends on Cottonwood Canyon to travel between the San Rafael Hills, the Arroyo Seco, Hahamongna Wilderness Park and South Pasadena. This property holds a treasure trove of history.

PLEASE HELP NOW to Save Cottonwood Canyon and its extended wildlife corridors.

**Audubon Center at Debs Park**

4700 North Griffin Ave. Los Angeles, CA 90031

PHONE: (323) 221-2255

Contact : [http://debspark.audubon.org/email/1617/field\\_location\\_email](http://debspark.audubon.org/email/1617/field_location_email)Calendar: <http://debspark.audubon.org/events>

- Every Saturday 8:30 a.m. Free Tai Chi contact: <http://debspark.audubon.org/forms/contact-us/636>

Giving just a little bit of your time can make a big difference to the success of the Audubon Center at Debs Park. We offer many opportunities to help us bring people together to appreciate, enjoy, and protect birds and nature.

**BEAR CANYON TRAIL CREW**

I've completed the Bear Canyon Trail Maintenance schedule for the 2013-2014 calendar year. Last year I based the dates on the weather predictions in the Old Farmer's Almanac and every day was a great day. So I did it again this year.

Unfortunately for trail work, it is supposed to be colder and wetter this year (which happens to be good news for someone with a brand new Subaru Outback and a Mt Baldy Season pass....) I've included the schedule. Under each date is the weather prediction for the week from the OFA. I'll be sending out a notice for the December event in a separate email..

Andy

[abhoyer@yahoo.com](mailto:abhoyer@yahoo.com)

213-675-0420

**Bear Canyon Trail Maintenance 2013-2014 Schedule** With Old Farmer's Almanac Weather Prediction

- Dec 28<sup>th</sup> Outing Temp. 54° (avg.) 22nd-31st Sunny, turning warm
- Jan 25<sup>th</sup> Outing Temp. 53° (1° below avg.) 25th-27th Sunny, cool
- Feb 22<sup>nd</sup> Outing Temp. 52.5° (2.5° below avg.) 22nd-28th Showers, then sunny, cool
- Mar 22<sup>nd</sup> Outing Temp. 56° (1° below avg.) 21st-25th Scattered showers, cooler
- Apr 19<sup>th</sup> Outing Temp. 60° (avg.) 15th-20th Showers, then sunny, warm
- May 17<sup>th</sup> Outing Temp. 66° (2° above avg.) 11th-19th Sunny, warm inland
- Jun 14<sup>th</sup> Outing Temp. 68° (avg.) 13th-17th Sunny inland

**Big Santa Anita Canyon**<http://www.bigsantaanitacanyon.com/>

- Open Year round, 6 am to 8 pm every day.
- The road is gated and the gate is locked at night.

Be sure to return to your car before 7:30 pm or you may not get out! During and after heavy rains, fires, or after significant earthquakes, and during fire alerts the road may be closed.

- The Sierra Madre Police Dept. is in charge of locking/unlocking the gate. If you are concerned that the road might be closed you can call them for info: 626 355-1414.

- Adams Pack Station Contact:

Friday, Saturday &amp; Sunday 8:00 am - 5:00 pm (626) 447-7356

**Blight Busters Trail Crew**

Danny Treadway

[dayhiker86@yahoo.com](mailto:dayhiker86@yahoo.com)**Boy Scouts of America Los Angeles Area Council**<http://www.laac-hat.org/>

## California Trail Users Coalition (CTUC)

<http://www.ctuc.info/ctuc/>

## VOLUNTEER GROUP NEWS

- **Dec 18<sup>th</sup> MEETING** Come and Join Us CTUC meets on the 3rd Wednesday of every month at 5:00 p.m. at 3550 Foothill Blvd., Glendale, CA.

Our meetings are open to everyone who wishes to participate. Volunteers have a great time working together on these types of projects. To volunteer on one of our projects, please join us by calling our Chairman, Terry Kaiser at 818-353-4682. You may also email: [edwaldheim@aol.com](mailto:edwaldheim@aol.com)

- **CTUC MAPS** The first map in our series was completed in 2005 and now, several years later, there are eight maps in print with as many as four more in the works. CTUC maps are unique in that they are not complete inventories of routes. Instead they are travel guides to the area with selected routes shown.

For more information: <http://www.ctuc.info/ctuc/index.php/maps>

## CITY OF GLENDALE

### Parks, Recreation & Community Services Dept

<http://www.ci.glendale.ca.us/parks/default.aspx> 818-548-2000

- **Dec 14<sup>th</sup> "Do You Hear What I Hear?" (Night Hike and Program)**

**Location:** Glendale Sports Complex, 2200 Fern Lane, Glendale, CA 91208

**Time:** 7:00 p.m. - 9:00 p.m.

**Description:** Leave the hustle and bustle behind and spend a part of this holiday season with us on a "night hike." This easy 2.5 mile trek will put you in the holiday mood as we get out on a cold (almost winter) night and explore the two new trails at the Sports Complex.

**Information:** Join us after the hike for some cookies and hot chocolate. We might even sing a song or two. This event is destined to become a new holiday tradition for your family and friends. Space is limited for this program. You must call us at (818) 548-3795 to reserve your spot.

**Wear** sturdy shoes, bring water, hat, warm clothing, and a flashlight (we will provide red covers).

- **Dec 14<sup>th</sup> "Thank You For Being a Friend" Wilderness Workday**

**Location:** Deukmejian Wilderness Park, 3429 Markridge Road, Glendale, CA 91214

**Time:** 8:00 a.m. to 12 noon

**Description:** As 2013 comes to a close, we want to thank all the volunteers that have helped with the park restoration during this past year. We also want to thank the Crescenta Valley Group of the Angeles Chapter of the Sierra Club for their very generous donation. They purchased the fifteen Big Cone Firs for this special workday morning of planting, watering, and weeding. In addition, they are donating fifty Coast Live Oaks for future planting days. **Information:** Participants should wear long pants and bring sunscreen, sunglasses, and a hat. We'll provide the drinks and snacks.

**You do not need to RSVP for this event unless you are bringing a large group of children under the age of 18. Call (818) 548-3795 for more information.**

## Community Hiking Club [communityhikingclub.org](http://communityhikingclub.org)

**661-259-2743 Dianne Erskine Hellrigel email: [zuliebear@aol.com](mailto:zuliebear@aol.com)**

- **Dec 7<sup>th</sup>--East Canyon to Mission Peak**

This is a great hike to the top of East Canyon, and beyond to Mission Peak. The trail is actually a dirt road, which is currently in use by the SCE. You will follow this up approximately 3 miles before taking a traverse to the left which will lead you up to Mission Peak. This hike offers spectacular view of the surrounding canyons, Santa Clarita, and from Mission Peak, if you're lucky, you may even be able to see the ocean! This hike is approximately 8 miles with 800 ft of gain.

**Meet** at the MRCA green trail head gate at East Canyon at 8:00 AM for an 8:15 departure.

**Dress** in layers as it can get colder and windier on the ridge and up on Mission Peak.

**Bring:** Water, snacks, lunch. Poles are helpful too.

**Rated:** Moderate **Leader:** Steve

(cont to p15)

P 14 vol. 12 Issue 12

- **Dec 14<sup>th</sup>-Devil's Punchbowl to Devil's Chair**

**This** 7 mile round trip hike includes some altitude and a mild climb. It is one of the most scenic hikes in our area. The Devil's Punch Bowl itself is a gorgeous site with the protruding rocks and sheer rock faces. We travel through Devil's Punchbowl, and go onto Pleasant View Ridge which is opposite Cooper Canyon that we have hiked many times from the La Canada area.

**Bring** a snack, lunch, lots of water and poles if you have them.

**Meet** at Towsley Canyon at 7:45 for an 8:00 AM carpool departure to the trail head. If you wish to meet us at the trail head, we should be there between 9:00 and 9:15. The address of Devil's Punch Bowl is: 28000 Devil's Punchbowl Rd., Pearblossom Ca. 93553

**Directions to Trail head:** Take the SR-14 North to the Angeles Forest Hwy exit, Exit 30., and go towards Pear Blossom Highway. Keep left to take the ramp toward Pearblossom Hwy/Littlerock/Victorville. Merge onto Sierra Hwy. Stay straight to go onto Pearblossom Hwy. Turn right onto Pearblossom Hwy/CA-138. Turn right onto 87th St E. Take the 2nd left onto Fort Tejon Rd. Turn right onto Longview Rd. Turn left onto Tumbleweed Rd. Turn slight right onto Devil's Punchbowl Road. 28000 Devil's PunchBowl Road is at the end of the road. Park. We will meet in the parking lot near the porta potty.

**Rated:** Moderate (plus altitude) **Leader:** Richard

- **Dec 15<sup>th</sup> - Foot Fitness Workshop**

- **Dec 20<sup>th</sup> - Easy hike from Placerita to Walker Ranch**

For those of you who may have missed this hike earlier this month, this easy, EASY hike is 5 miles RT on a mostly flat trail. Sylvia invites you to stroll the canyon with her, and enjoy the flora and fauna you can always find along the way. There are a few small hills, but they are short and not too high. You will have a pleasant walk through the riparian area along Placerita Creek.

**Meet** at Placerita Nature Center at 8:00 for an 8:15 departure down the trail. This is a good hike for beginners and will also stimulate your appetite for the Pot Luck!

**Rated:** Easy **Leader:** Sylvia

- **Dec 21<sup>st</sup> -Easy Hike from Placerita to Walker Ranch**

**This easy, EASY** hike is 5 miles RT on a mostly flat trail. There are a few small hills, but they are short and not too high. You will have a pleasant walk through the riparian area along Placerita Creek. Dave will have you back by noon, so you can join in the festivities of the Community Hiking Club Pot Luck Christmas Party if you'd like!

**Meet** at Placerita Nature Center at 9:45 for a 10:00 departure down the trail. This is a good hike for beginners and will also stimulate your appetite for the Pot Luck!

**Rated:** Easy **Leader:** Dave

- **Dec 21<sup>st</sup> - COMMUNITY HIKING CLUB POT LUCK CHRISTMAS PARTY**

Everyone is invited! Bring your significant other, the kids, and a dish for everyone to share....bring sides, salads, desserts, and main courses and your own drinks. Your dish should serve 10. We will have some hamburgers and hot dogs on the Barbie! We will be in the picnic area at Placerita Nature Center, just across the bridge. **The party** is from 12:00 NOON to 2:00. **No alcoholic** drinks are allowed in the park.

(cont p16)

**• Dec 28<sup>th</sup> - Golden Valley Ranch/Canyon Country Historical Hike**

This hike starts at the parking lot of the Golden Valley Ranch Open Space (<http://hikesantaclarita.com/where-to-go/golden-valley-ranch/>), approximately 2 miles east of the entrance to Placerita Canyon Nature Center.

**Meet** at 8:15 AM for an 8:30AM departure.

**Part 1** of the hike is a relatively moderate walk up a fire road where we will encounter the trail that leads to the top of Horse Peak, the highest point in the City of Santa Clarita at an elevation of 2,391 ft. The trail is a little overgrown with brush so long pants and shirts are recommended. It's about a 500' elevation gain over 2 miles. Along the way we'll discuss the history of the land, including stories about the pioneer Walker, Nadeau, and Mitchell families. Beginning hikers can then retrace their steps back down to the parking lot.

**Part 2** of the hike will be a more advanced scramble along ridges with some steep drop offs to a peak with a marvelous 360 degree view of the Santa Clarita Valley.

**Part 1** is about a 3-mile round trip, doing both parts 1 & 2 is about 5 miles and will take about 4 hours to complete.

**Rain** will definitely cancel this hike because the parking lots, roads, and trails get too muddy and slippery.

**Hike Leader:** Ron **Rated** Easy for Part 1, Moderate for Part 2

**Concerned Off-Road Bicyclists Association (CORBA)**

**PHONE:** (818) 773-3555

**FACE BOOK:** <http://www.facebook.com/CORBAMTB>

<http://corbamt.com/>

**For schedule goto:** <http://corbamt.com/Calendar/index.shtml>

**• Dec 2<sup>nd</sup> COSTAC Monthly Meeting** The Conejo Open Space Trails Advisory Council meets the first Monday of the month to discuss Conejo Open Space Conservation Agency trails issue. The public is welcome to attend. **For more information, contact Nicole Tindell, 805-495-0545.**

**• Dec 23<sup>rd</sup> Monthly CORBA Board of Directors meeting. All are welcome**

The Concerned Off-Road Bicyclists Association (CORBA) is an all-volunteer non-profit organization serving the mountain bicycling community of Los Angeles and its surrounding areas including southern Ventura County. We are dedicated to preserving open space, maintaining public access to public lands, and creating more trail opportunities for all to enjoy. We are a chapter of the International Mountain Bicycling Association.

**Crescenta Valley Trail Crew aka CV Trail Crew**

**Karen Buehler 818-363-6216 [karen.buehler2@gmail.com](mailto:karen.buehler2@gmail.com)**

**Face book:** <http://www.facebook.com/#!/cvtrail.crew>

**• Fridays – 7:00 AM to 12:00 PM Trail Restoration Deukmejian Wilderness Park**

**• Dec 14<sup>th</sup> - 8:00 AM to 3:00 PM - Sierra Club- Strawberry Peak Trail**

**Lead** by Karen Buehler. **For more information, contact me.**

**• Jan 4<sup>th</sup> January 4 -Basic Trail Building Class. Flyer to come.**

**• TBD -Vineyard Interpretative Trail Construction-Deukmejian**

**• March 2014 TBD -Rosemont Preserve Trail Maintenance**

We will also continue maintenance of the trails in Deukmejian Wilderness Park and other projects in Angeles National Forest.



**Friends of El Prieto Trail**

[bannermoffat@earthlink.net](mailto:bannermoffat@earthlink.net)

On Nov. 24th, Mount Wilson Bicycle Assoc. (MWBA) and Friends of El Prieto organized a trailwork day on the lower parts of El Prieto Trail. 21 people showed up and 3 more hiked in later in the day.

We printed out instructions on photos as illustrated to assist with supervising folks new to trailwork. The trail is now wider and safer at some of the spots with steep drop-offs and with improved drainages and bench cuts, it should fare better in the upcoming rainy season - as the before & after photos illustrate... though there is always more to do!

- - Banner Moffat (Friends of El Prieto).

**HABITAT WORKS** <http://www.habitatwork.org>

**Kim Clark or Tom Persons 818-353-4653**

**Haramokngna American Indian Cultural Center**

[www.haramokngna.org](http://www.haramokngna.org) 663-449-8975.

• **2014 Tongva calendar**

The calendar is illustrated by contemporary artworks by local Native artists with a history of supporting Haramokngna.



This is the first time a Tongva calendar is being made, a significant achievement and historic first. Tongva words appear alongside English, and we acknowledge the Advocates for Indigenous California Language Survival for partially funding the project

If you are interested in ordering a calendar for \$20 – or ordering several for gifts – please go to our website [www.haramokngna.org](http://www.haramokngna.org) to order on-line.

• **Stop by our Center any weekend from 10am – 4pm** and by appointment for groups during the week . We are happy to answer any questions about Native American culture, the Angeles National Forest, hiking trails, camping, etc. We have ample parking out front.

• **Volunteers** As a cultural, environmental and arts organization, Haramokngna American Indian Cultural Center shares the flavor of Native American history, culture, traditions and arts with the Los Angeles community. We are always looking for energetic individuals ready to represent the Cultural Center during special events and regular office hours.

• **Check the Pukuu's Amazon Store** <http://astore.amazon.com/pukucultcomms-20>

When you order items thru our store, a percentage is donated to our center. THANK-YOU

**High Country Riders**

Forest wide equestrian volunteer group that packs Equipment, Material and Supplies etc. to your Trail or worksite. Packs Trash & Rubbish out of the Forest.

Contacts: Jonathan Schultz 951-830-3400 [maujds@earthlink.net](mailto:maujds@earthlink.net)

- Forest Certified Animal Packer,
- Master Teacher for "LNT",
- "C" Crosscut Saw Certifier
- Chainsaw "B" faller

**Glen Foster** 760-949-3497 or 760-508-0344 [pjgwfooster@aol.com](mailto:pjgwfooster@aol.com)

Certified Packer

**JPL TRAILBUILDERS** Kathie Reilly 818-354-8321 (JPL) Jack Russell 562-861-3187

- Dec 14<sup>th</sup> Outing
- Dec 28<sup>th</sup> Outing

**WHAT'S HAPPENING:**

We will continue maintenance on the Mt Lowe West Trail, working from the middle up (unless some other request comes up). Maintenance involves cutting back brush to 6 foot-wide clearance, and tread repair to 3 foot-wide.

**Matt Maxon** [matt@mattmaxon.com](mailto:matt@mattmaxon.com)

Continuing to work on the Stone Cyn Trail. No set schedule. Hope to get out for 1 day at least, every month. I'm very flexible If you want to come out contact me and we'll work something out. Brush clearance top down is my main focus right now, but there is plenty of tread that needs work, switch backs that need to be rebuilt, and 2 slide areas / washouts that need something done with them.

**Mount Disappointment 50K Conservation Group**

[www.mtdisappointment50k.com](http://www.mtdisappointment50k.com) Gary Hilliard, Director

- We are planning the races for in 2014

**Mount Wilson Bicycling Association**

<http://mwba.org/>

**Mitch Marich**, [info@mwba.org](mailto:info@mwba.org)

- **GO HERE TO BECOME A MEMBER:**

<https://www.imba.com/civicrm/contribute/transact?reset=1&id=124>

On Nov. 24th, Mount Wilson Bicycle Assoc. (MWBA) and Friends of El Prieto organized a trailwork day on the lower parts of El Prieto Trail. 21 people showed up and 3 more hiked in later in the day.

We printed out instructions on photos as illustrated to assist with supervising folks new to trailwork. The trail is now wider and safer at some of the spots with steep drop-offs and with improved drainages and bench cuts, it should fare better in the upcoming rainy season - as the before & after photos illustrate... though there is always more to do!

**Mount Wilson Institute**

P. O. Box 1909, Atlanta, Georgia 30301-1909

(404) 413-5484 <http://www.mtwilson.edu/>

Cosmic Cafe (626) 440-9018

- **Cosmic Cafe closes after Dec 1<sup>st</sup>, then will close for the winter. 10am-4pm.**

- For directions or more information please visit [www.mtwilson.edu](http://www.mtwilson.edu)
- The Cosmic Cafe sells the Adventure Pass during our operating hours.

**Support Mount Wilson Observatory**

We Need Your Help - Mount Wilson Observatory is privately owned and receives no continuing state or federal support. You can help ensure the continued operation of this science heritage.

- **Join** our Friends of Mount Wilson Observatory organization to receive a variety of member benefits and stay informed on the latest scientific and other activities from the mountain.
  - **Contribute** to our Second Century Campaign. As Mount Wilson continues into its second century, a capital campaign is being developed to preserve this great observatory for future generations.
  - **Be a Docent Tour Guide** - We welcome applications from individuals interested in participating as docents in our very active guided tour programs.

For application information go to: <http://www.mtwilson.edu/>

## Mount Wilson Race

<http://www.mountwilsontrailrace.com/HOME.html>

- **Plans are being made for the May 24<sup>th</sup>, 2014 race.**

If you are interested in sponsorship opportunities please contact the Recreation Supervisor for the City of Sierra Madre Kyle Schnurr. [kschnurr@citvofsierramadre.com](mailto:kschnurr@citvofsierramadre.com) or by phone at (626) 355-7394.

## SAN GABRIEL TRAILBUILDERS <http://www.sgmtrailbuilders.org>

Ben White: 626-303-1078

[ben@sgmtrailbuilders.org](mailto:ben@sgmtrailbuilders.org)

**We work on the first, third, and fifth Saturday of each month** Trail working volunteers may join the San Gabriel Mountains Trail Builders in the continued restoration process for trails in and around Crystal Lake, East Fork, Heaton Flats, Upper & Lower Bear Creek, the Baldy Area and many other locations on the Angeles National Forest.

**Learn how to use all the Trail tools** to work the trails. Help you learn how to get your certificates for Chainsaw and Crosscut Saws use on the National forest.

**If you would like to volunteer** your time, please send e-mail to [feedback@crystallake.name](mailto:feedback@crystallake.name) I will let you know when, where, and what you need to know to join us.

### MEETING LOCATION :

San Gabriel Canyon Gateway Center,  
1950 North San Gabriel Canyon @ 7:30am

## SCENIC MT. LOWE RAILWAY

<http://www.mtlowe.co>

Brian Marcroft 562-868-8919 E-mail: [Emworks@verizon.net](mailto:Emworks@verizon.net)

- **Dec 14<sup>th</sup> Annual Mt. Lowe / Alpine Tavern Excursion**

## Sierra Club [www.angeles.sierraclub.org/pasadena/](http://www.angeles.sierraclub.org/pasadena/)

Sierra Club-Pasadena Group

P.O. Box 94086

Pasadena, CA. 91109-4086 (626) 791-76606

For more calendar details go to [http://www.angeles.sierraclub.org/pasadena/outings\\_3mos.html#Dec](http://www.angeles.sierraclub.org/pasadena/outings_3mos.html#Dec)

- **Now until Friday, December 13, 2013**

**Pasadena Group Support Event:** Benefit Shopping at Ten Thousand Villages at 567 S Lake Ave Pasadena, CA 91101. Stop by any time during this two-week period between the holidays to browse and shop hand-crafted items made by indigenous people from around the world. Identify yourself as a Sierra Club member and a percentage of proceeds from your purchases from this non-profit organization will benefit Pasadena Group conservation and outreach activities. **Coordinator:** David Czamanske 626-458-8646

[dczamanske@hotmail.com](mailto:dczamanske@hotmail.com)

- **Dec 4<sup>th</sup> 7:00 PM**

**Monthly Meeting:** Ornithologist and naturalist Alex Oloo, owner of Alex Nature Tours, presents "Kenya Nature Safaris: Exploring Kenya's natural beauty and animal migrations in the country's national parks and game preserves". Information on Group's hikes, outings, and conservation activities. Newcomers always welcome. Doors open at 7 pm, program at 7:15 pm at Eaton Canyon Nature Center, 1750 N Altadena Dr in NE Pasadena. For information contact Group Membership Chair, Elizabeth Pomeroy, 626-791-7660 [ewpomeroy@gmail.com](mailto:ewpomeroy@gmail.com)

- **Dec 5<sup>th</sup>/12<sup>th</sup>/19<sup>th</sup>/26<sup>th</sup> Henninger Flats Conditioning Hike**
- **Dec 4<sup>th</sup> Zion Loop from Chantry Flats**
- **Dec 7<sup>th</sup> South Pasadena Historic Walk**

- Dec 14<sup>th</sup> Ye Alpine Tavern (aka Mt Lowe Trail Camp) via Lower and Middle Sam Merrill Trails.
- Dec 14<sup>th</sup> Strawberry Peak Trail Restoration
- Dec 15<sup>th</sup> Lake Hollywood Reservoir Walk
- Dec 21<sup>st</sup> Historic Mt Wilson Trail via Little Santa Anita Canyon to Orchard Camp (2960') from Lizzie's Trail Inn

**Tree People** <http://www.treepeople.org> FACEBOOK: Tree People  
12601 Mulholland Drive  
Beverly Hills, CA 90210 Telephone (818) 753-4600

**So! For our first decent rain of the season, we got almost exactly 1/2" of rain overnight on the hilltop here at TreePeople's headquarters. That nets us about 3" in the cistern which equals... About 13,500 GALLONS OF FREE WATER captured in Coldwater Canyon Park from the storm!!! Not a bad start...**

For more calendar details go to: <http://www.treepeople.org/calendar/2013-12>

- Citizen Forestry Tree Planting Dec 7<sup>th</sup>
- Moonlight Hike Dec 14<sup>th</sup>
- Native Plants and Turf Reduction Dec 7<sup>th</sup>
- Park Work Day Dec 5<sup>th</sup>/12<sup>th</sup>/14<sup>th</sup>/19<sup>th</sup>
- Santa Monica Mountains Restoration Dec 7<sup>th</sup>/8<sup>th</sup>/14<sup>th</sup>/15<sup>th</sup>/21<sup>st</sup>
- Street - Residential Tree Care Dec 15<sup>th</sup>

## SOUTHERN CALIFORNIA MOUNTAINS FOUNDATION

<http://mountainsfoundation.org/> Sarah Miggins [smiggins@fs.fed.us](mailto:smiggins@fs.fed.us) 909-382-2796  
602 South Tiptecanoe, San Bernardino, California 92408

**Conservation**  Maintained and restored 200 acres of public lands  Recycled 21,000 lbs. of plastic bottles  
 Completed wilderness inventory, invasive plant removal and recreation monitoring in five Southern California wilderness areas in preparation for the 50th anniversary of the Wilderness Act  
 Maintained seven historic fire lookout towers on the San Bernardino National Forest  
 Fire lookout hosts dispatched 11 first reports of fires  Planted 2,500 native plants in disturbed areas  
 Removed over 12,500 lbs. of trash from public lands  
 Coordinated 80,613 volunteer service hours, in-kind value of \$1,784,771

**Education**  Graduated 13 Urban Conservation Corpsmembers through the SCMF's John Muir  
 Educated 3,066 students through conservation education programs  
 Greeted and educated 208,300 visitors through the Big Bear Discovery Center, Fire Lookouts and the  
 Provided over 200 interpretive programs on forest lands  
 Opened the Nature Discovery Zone at the Big Bear Discovery Center, becoming the first certified Nature Explore Classroom in a National Forest  
 Provided after school educational programs at two local elementary schools  
 Discovery Center became a certified NestWatch site to promote an interactive citizen science program sponsored by Cornell Ornithology Lab

**Recreation**  OHV volunteers assisted in maintaining over 900 miles of roads and trails  
 Educated over 3,000 visitors through naturalist-guided tours  
 Hosted Winter Trails Day and National Trails Day events  
 Constructed 1/2 mile nature loop at the Big Bear Discovery Center Special Honors

**Special Honors**  Partner of the Year ~ U.S. Forest Service; Pacific Southwest Region  
 Organization of the Year ~ California Invasive Plant Council  
 Nonprofit of the Year ~ Big Bear Lake Chamber of Commerce  
 Certified Urban Conservation Corps of the Inland Empire ~ California Conservation Corps  
 Certified 21st Century Service Corps

## Pacific Crest Trail Association

<http://www.pcta.org>

**FACE BOOK:** <http://www.facebook.com/#!/PCTAFan>

Liz Bergeron lbergeron@pcta.org

Sacramento, CA Phone: (916) 285-1846 x 2

- **Jan 1<sup>st</sup> - Dec 30<sup>th</sup>. 'Fannypack' Projects [FALC]. SBNF, ANF, CNF, and BLM.**

Swat teams to inventory trail, clear trees and boulders, and repair slides on short notice.

Open to qualified volunteers.

Contact: Pete Fish, Email: [pickaxepete@sbcglobal.net](mailto:pickaxepete@sbcglobal.net), Tel.: 805-658-6540

or: John Hachey Email: [goaliejhachey@msn.com](mailto:goaliejhachey@msn.com), Tel.: 909-605-3219.

- **Join us! The Pacific Crest Trail is more than a trail from Mexico to Canada.**

**It is a community that stretches around the world. Come out and play.**

<http://www.pcta.org/get-involved/> **Play in the dirt, Meet new people, Sleep under the stars.**

**Pacific Crest Trail maintenance volunteers are needed** throughout California, Oregon, and Washington to help repair erosion problems, clear fallen trees, and remove encroaching brush. Help make the hiking and equestrian experience a better one now and for future generations.

Volunteers can head out for the day, a weekend, or longer with car and backcountry camping options available. There are no fees to volunteer and meals are included at our overnight events. Prior trail maintenance skills are not needed on most projects, experienced crew leaders are there to teach you the skills needed. To learn more contact Merrit Hoeh at (916) 285-1838, [volunteer@pcta.org](mailto:volunteer@pcta.org) or check out the volunteer schedule at [www.pcta.org](http://www.pcta.org). Have an adventure of a lifetime by volunteering on the Pacific Crest Trail!

## Volunteers of the Angeles National Forest

Wrightwood, CA <http://www.grassyhollow.net>

Visitor Center Phone #: (626) 821-6737 Loren Lake [lorenll@verizon.net](mailto:lorenll@verizon.net)

- **The Grassy Hollow Visitor Center and Grounds are open for day-use only**

**Hours: Saturdays, Sundays and Holidays 10:00 am to 4:00 pm**

**Weekdays- for school groups, youth organizations, etc. By Appointment**

## William S Hart UHSD of Santa Clarita ANF Crew 5130

Kevin Sarkissian 661.250.0022 X 552 [ksarkiss@hartdistrict.org](mailto:ksarkiss@hartdistrict.org)

Continuing on January 13, 2014 'Outdoor Recreation and Wilderness Conservation' will again be offered as a 5 credit class through the District's Regional Occupational Training Program as a collaborative training venture between WS Hart Union High School District, USFS, PCTA, LA County Parks and Rec, and the MRCA. In addition to high school credit, participating students may be offered a paid work experience internship while gaining practical exposure to land management practices and career pathways related to conservation and resource management including; trail maintenance and construction; wildlife conservation; backcountry navigation; environmental stewardship; search and rescue response; and much more!

This 18 week class is also open to interested non-district students, adults, and agency personnel.

For a complete course outline,

visit [www.hartrop.com/forestry](http://www.hartrop.com/forestry)

or contact Kevin Sarkissian at

[ksarkiss@hartdistrict.org](mailto:ksarkiss@hartdistrict.org)

661.259.0033 X 525



Los Angeles River Ranger District  
12371 North Little Tujunga Canyon Road  
San Fernando, CA 91342

TUNDRA by Chad Carpenter, Los Angeles Times Jul 21, 2010 email: [info@tundracomics.com](mailto:info@tundracomics.com)



**Volunteer Today**  
Send this in Right Away to  
Dennis Merkel —12371 N. Little Tujunga Canyon Rd  
San Fernando, CA 91342

Name \_\_\_\_\_  
Address \_\_\_\_\_  
\_\_\_\_\_

Phone # (hm) \_\_\_\_\_  
e-mail \_\_\_\_\_

Interests  
Indicate what you would like to do. Circle area or enter your interests.  
Campground Host/ Visitor Information/ Smokey Bear - Fire Prevention/  
Recreation Aid / Forest Patrol /Resource Management / Computers/  
Research-Librarian / Office Clerical / Tour guide/ Fire Lookout/  
Conservation Education / habitat restoration and tree planting  
Other: \_\_\_\_\_  
\_\_\_\_\_